



rayhil

redefine brilliance

Spring 2026

ABOUT US

At Rayhil, we are endlessly devoted to finding innovative ways to light up the world. Since 2018, our team has found countless techniques to blend technology and design in order to create functional and energy-efficient lighting solutions. Above all else, our products are designed with quality in mind because illumination should feel effortless—like flipping on a switch. Our engineers are focused on simplifying technology to provide lighting solutions that last longer and perform better across every metric from longevity to energy-efficiency. Rising energy costs and a desire to live more sustainably are shaping the lighting industry, for the better. Energy efficient performance is where Rayhil's design team shines, producing low energy consumption solutions.

The Rayhil brand provides what customers need today by focusing on what is needed for tomorrow. We invest in research and development to position our brand as a leader in the residential and commercial lighting markets, adapting to changes driven by government regulations, energy markets, and consumer needs. From the Assembly Line to the Light Switch, Rayhil provides an unmatched experience by redefining what it means to illuminate.



rayhil

redefine brilliance

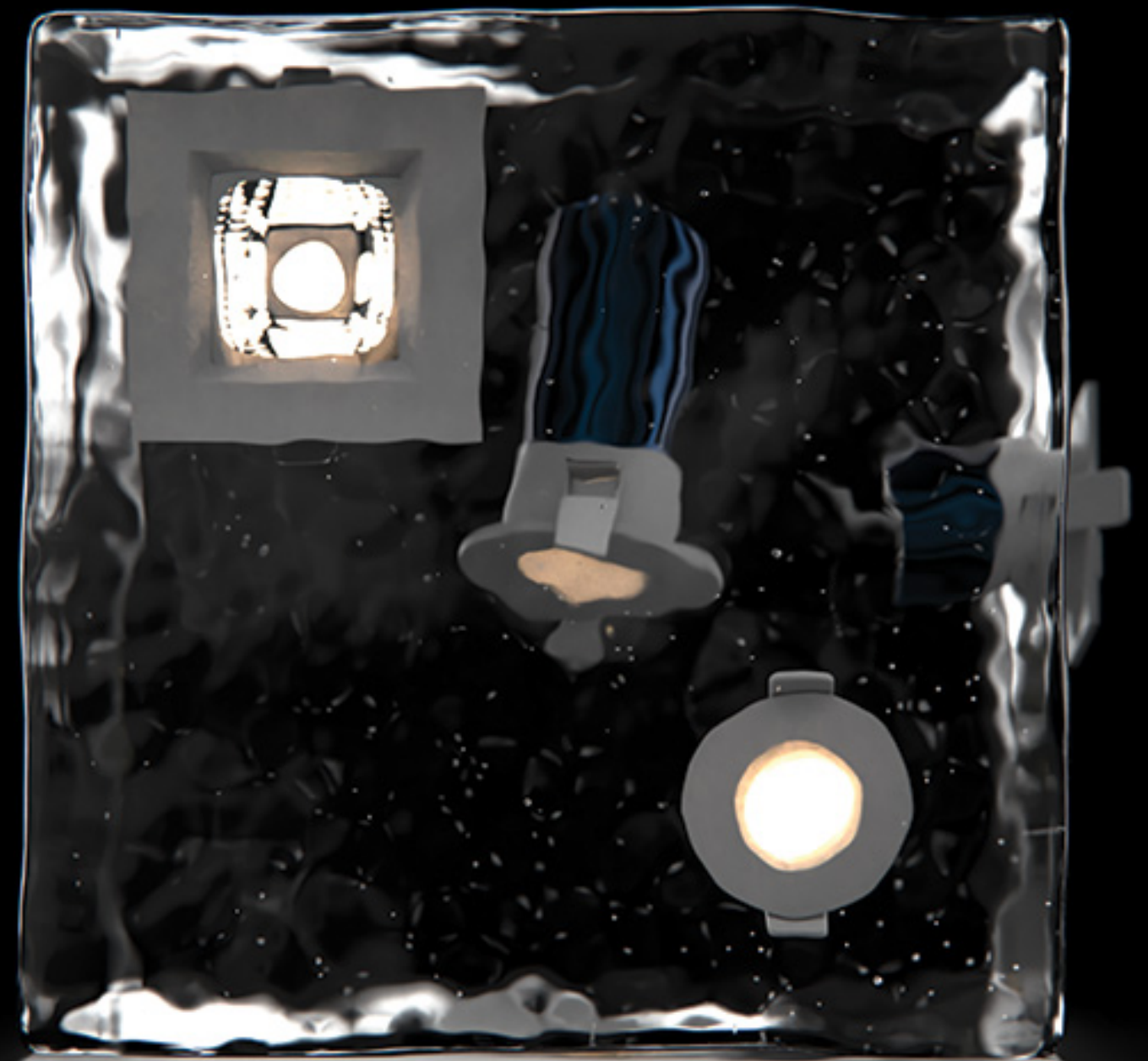


CONTENT

06	SONIC DOWNLIGHTS	70	FUSE LINEAR
22	VORTEX DOWNLIGHTS	74	RIB LUMINARY
28	LUCID DOWNLIGHTS	80	LEDGE COVE
36	RYNO DOWNLIGHTS	84	ANCHOR WALL WASHER
44	PARKLINE OVERBED	92	QUE TRACK SYSTEM
50	REVOLVE CYLINDER	110	FLORA LANDSCAPE
54	STRIKE ARCHITECTURAL STRIP LIGHT	120	INDIGO WALL SCONCE
58	ROVE LINEAR	124	INSITE WALL LUMINARY
62	METRO LINEAR	128	INFUSE CYLINDER
66	LEXLINE LINEAR	136	INOVA CEILING FIXTURE

06 SONIC DOWNLIGHT

The Rayhil Sonic Downlights boast an exceptional 90+ CRI light while simultaneously reaching substantial lumen counts on each model. The sleek design of the Downlights is just as practical as they are appealing. Air-tight and wet location approved, as well as Type IC rated – approved for direct contact with insulation. They are also equipped with an Isolated driver inside a junction box. Available in multiple color temperatures, trim colors and shapes, as well as sizes.



15 Degree
2700K

25 Degree
3000K

36 Degree
3500K

50 Degree
4000K

Beam Angle

Immerse your space in the perfect light with our versatile downlights featuring a range of beam angles. Tailor the illumination to your specific needs with options including narrow, medium, and wide beam angles. Whether you desire focused accent lighting to highlight artwork or a broad wash of light to brighten up a room, our downlights offer exceptional flexibility. Transform your environment with precision and control, ensuring every corner is bathed in the ideal distribution of light. Discover the power to shape your space with our downlights' customizable beam angles.



SONIC

1.0 RECESSED DOWNLIGHT

SONIC

1.5 RECESSED DOWNLIGHT



RAD10R - ROUND

5W
400LM
Beam Angle 60°
Cut out 1.33" | Height 1.72"
IC Rated

RAD10S - SQUARE

5W
400LM
Beam Angle 60°
Cut out 1.33" | Height 1.72"
IC Rated

RAD15R - ROUND

7W
600LM
Beam Angle 36°
Cut out 2" | Height 2.93"
IC Rated

RAD15S - SQUARE

7W
600LM
Beam Angle 36°
Cut out 2" | Height 2.93"
IC Rated

ADDITIONAL INFO

- Input Voltage: 24V
- CCT: 1800K, 2200K, 3000K, 3500K, 4000K, Warm to Dim
- Non Dimmable

ACCESSORIES

- Drivers: LB55504, LB55450, LB55451, LB55452

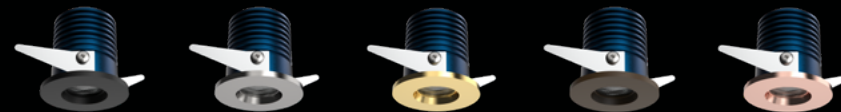
ADDITIONAL INFO

- Input Voltage: 120V or 277V
- CCT: 1800K, 2200K, 3000K, 3500K, 4000K, Warm to Dim

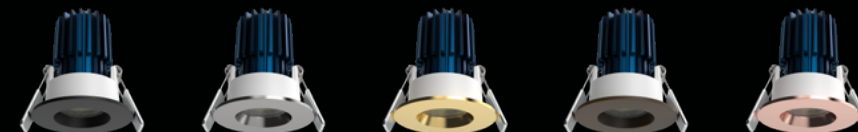
ACCESSORIES

- New construction plate available (NCH150)
- Optional Emergency Backup RAD15-EM

Trim Color: White, Black, Brushed Nickel, Gold, Bronze, Copper

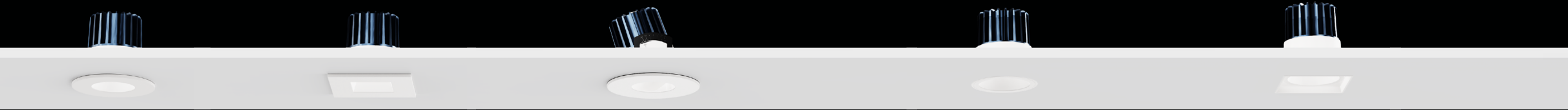


Trim Color: White, Black, Brushed Nickel, Gold, Bronze, Copper



SONIC

2.5 RECESSED DOWNLIGHT



RAD25R - ROUND

9W | 14W
 800LM | 1100LM
 Beam Angle 24° / 38° / 50°
 Cut out 2.36" | Height 3.15"
 IC Rated

RAD25S - SQUARE

9W | 14W
 800LM | 1100LM
 Beam Angle 24° / 38° / 50°
 Cut out 2.36" | Height 3.15"
 IC Rated

RAD25R - ADJUSTABLE

9W | 14W
 800LM | 1100LM
 Beam Angle 24° / 38° / 50°
 Adjustable Tilt 25°
 Cut out 3" | Height 2.93"
 IC Rated

RAD25R - TRIMLESS ROUND

9W | 14W
 800LM | 1100LM
 Beam Angle 24° / 38° / 50°
 Cut out 3.94" | Height 2.81"
 IC Rated

RAD25S - TRIMLESS SQUARE

9W | 14W
 800LM | 1100LM
 Beam Angle 24° / 38° / 50°
 Cut out 3.94" | Height 2.81"
 IC Rated

ADDITIONAL INFO

- Input Voltage: 120V-277V
- CCT: 1800K, 2200K, 2700K, 3000K, 3500K, 4000K, 5000K, Warm to Dim

ACCESSORIES

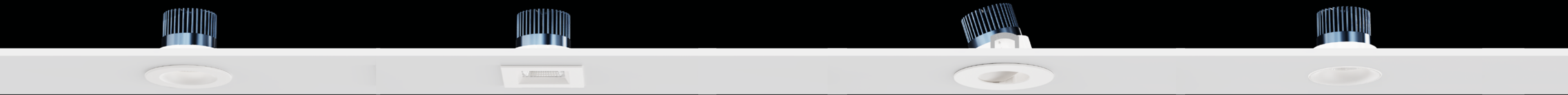
- New Construction Plate available (NCH250)
- Optional Emergency Backup RAD25/35-EM
- Hex Louver Lens

Trim Color: White, Black, Brushed Nickel, Gold, Bronze, Copper
 *NOT AVAILABLE FOR TRIMLESS OPTION



SONIC

3.5 RECESSED DOWNLIGHT



RAD35R - ROUND

15W
1250LM
Beam Angle 15° / 24° / 36° / 50°
Cut out 3.5" | Height 3.75"
IC Rated

RAD35S - SQUARE

15W
1250LM
Beam Angle 15° / 24° / 36° / 50°
Cut out 3.5" | Height 3.75"
IC Rated

RAD35ADJ - ADJUSTABLE

15W
1250LM
Beam Angle 15° / 24° / 36° / 50°
Adjustable Tilt 25°
Cut out 4" | Height 3.62"
IC Rated

RAD35TMS - TRIMLESS

15W
1250LM
Beam Angle 15° / 24° / 36° / 50°
Cut out 3.74" | Height 3.39"
IC Rated

ADDITIONAL INFO

- Input Voltage: 120V-277V
- CCT: 1800K, 2200K, 2700K, 3000K, 3500K, 4000K, 5000K, Warm to Dim

ACCESSORIES

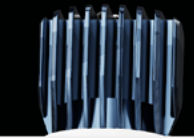
- New construction plate available (NCH350)
- Optional Emergency Backup RAD25/35-EM

Trim Color: White, Black, Brushed Nickel, Gold, Bronze, Copper



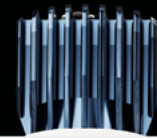
SONIC X

RECESSED DOWNLIGHT



SONIC X - ROUND

20W
2000LM
Beam Angle 15° / 24° / 36° / 50°
Cut out 3.5" | Height 4.72"
IC Rated



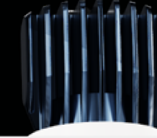
SONIC X - SQUARE

20W
2000LM
Beam Angle 15° / 24° / 36° / 50°
Cut out 3.5" | Height 4.72"
IC Rated



SONIC X - ADJUSTABLE

20W
2000LM
Beam Angle 15° / 24° / 38° / 50°
Adjustable Tilt 25°
Cut out 4" | Height 4.72"
IC Rated



SONIC X - TRIMLESS

20W
2000LM
Beam Angle 15° / 24° / 36° / 50°
Cut out 3.5" | Height 4.33"
IC Rated

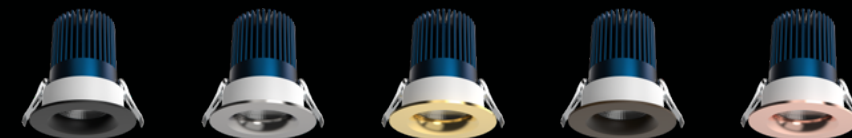
ADDITIONAL INFO

- Input Voltage: 120-277V
- CCT: 1800K, 2200K, 2700K, 3000K, 3500K, 4000K, 5000K, Warm to Dim

ACCESSORIES

- New construction plate available (NCH350)
- Optional Emergency Backup RAD25/35-EM
- Hex Louver Lens
- Solite Lens

Trim Color: White, Black, Brushed Nickel, Gold, Bronze, Copper



SONIC MULTIPLE



RAD2H - 2HEAD

12W x 2

1750LM

Beam Angle 15° / 24° / 38°

Cut out 7.5" x 3.75" | Height 4"

IC Rated

ADDITIONAL INFO

- Input Voltage: 120V or 277V
- CCT: 2700K, 3000K, 3500K, 4000K, 5000K Selectable

ACCESSORIES

- Trim Color: White, Black
- New construction plate available (NCH2H)



RAD3H - 3HEAD

12W x 3

2700LM

Beam Angle 15° / 24° / 38°

Cut out 10.875" x 3.75" | Height 4"

IC Rated

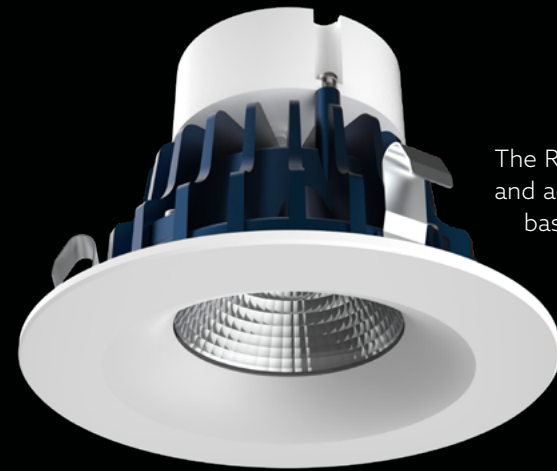
ADDITIONAL INFO

- Input Voltage: 120V or 277V
- CCT: 2700K, 3000K, 3500K, 4000K, 5000K Selectable

ACCESSORIES

- Trim Color: White, Black
- New construction plate available (NCH3H)

SONIC RETROFIT DOWNLIGHT

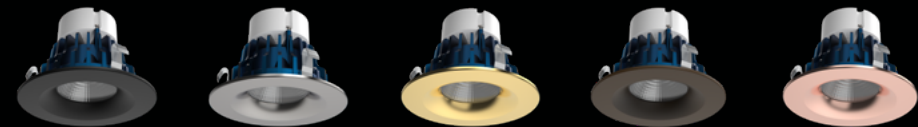


The Rayhil Sonic Retrofits were crafted with innovative efficiency and aesthetic perfectionism. The versatility of the E26 and MR16 base options, plus the multiple color temperatures, trim colors and shapes, as well as sizes, make the Retrofit Series achieve your lighting desires with ease. Each Retrofit displays exceptional 90+ CRI light while delivering over 75 lumens per watt. Compatible with both 4" New construction and 4" Remodel Housings. In addition, the Retrofits are suitable for wet location.

ACCESSORIES

- Drivers: LB55504, LB55450, LB55451, LB55452

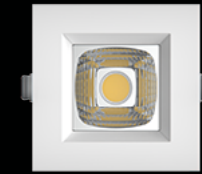
Trim Color: White, Black, Brushed Nickel, Gold, Bronze, Copper



RAD40R - ROUND

10W
1000LM
2700K, 3000K, 3500K, 4000K, 5000K Selectable
Trim | Height 3.375"
IC Rated

ADDITIONAL INFO
• Input Voltage: 120V or 12V
• Beam Angle: 24° / 36° / 50°



RAD40S - SQUARE

10W
1000LM
2700K, 3000K, 3500K, 4000K, 5000K Selectable
Trim | Height 3.375"
IC Rated

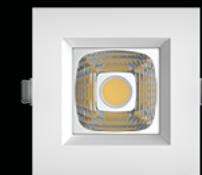
ADDITIONAL INFO
• Input Voltage: 120V or 12V
• Beam Angle: 24° / 36° / 50°



RAD40R - ROUND

MR16
10W
1000LM
2700K, 3000K, 3500K, 4000K, 5000K Selectable
Trim | Height 3.375"
IC Rated

ADDITIONAL INFO
• Input Voltage: 120V or 12V
• Beam Angle: 24° / 36° / 50°



RAD40S - SQUARE

MR16
10W
1000LM
2700K, 3000K, 3500K, 4000K, 5000K Selectable
Trim | Height 3.375"
IC Rated

ADDITIONAL INFO
• Input Voltage: 120V or 12V
• Beam Angle: 24° / 36° / 50°

22 VORTEX DOWNLIGHT

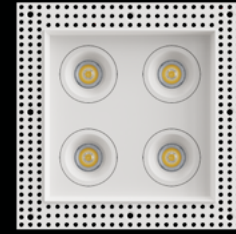
Elevate your lighting design with the Vortex Series, a premium recessed LED downlight available in 2.5" and 3.5" sizes. Choose from 2-head, 3-head, 4-head, and 4-head square configurations, with trimmed or trimless options to suit any aesthetic. Featuring adjustable CCT (1800K-5000K), multiple beam angles, and dimming compatibility, Vortex delivers precision lighting for architectural spaces. With an IC rating, wet location approval, and optional emergency backup, it offers both performance and reliability





VOR25 - 4HEAD SQUARE

9W | 14W
800LM | 1100LM
18K, 22K, 27K, 30K, 35K, 40K, 50K
Cut out 2.5" | Height 1.3"
IC Rated



VOR25TMS - 4HEAD SQUARE TRIMLESS

9W | 14W
800LM | 1100LM
18K, 22K, 27K, 30K, 35K, 40K, 50K
Cut out 2.5" | Height 1.3"
IC Rated



VOR25 - 2HEAD

9W | 14W
800LM | 1100LM
18K, 22K, 27K, 30K, 35K, 40K, 50K
Cut out 2.5" | Height 1.3"
IC Rated



VOR25TMS - 2HEAD TRIMLESS

9W | 14W
800LM | 1100LM
18K, 22K, 27K, 30K, 35K, 40K, 50K
Cut out 2.5" | Height 1.3"
IC Rated



VOR25 - 3HEAD

9W | 14W
800LM | 1100LM
18K, 22K, 27K, 30K, 35K, 40K, 50K
Cut out 2.5" | Height 1.3"
IC Rated



VOR25TMS - 3HEAD TRIMLESS

9W | 14W
800LM | 1100LM
18K, 22K, 27K, 30K, 35K, 40K, 50K
Cut out 2.5" | Height 1.3"
IC Rated

ADDITIONAL INFO

- Input Voltage: 120-277V
- Beam Angle: 24° / 38° / 50°

ADDITIONAL INFO

- Input Voltage: 120-277V
- Beam Angle: 24° / 38° / 50°



VOR25 - 4HEAD

9W | 14W
800LM | 1100LM
18K, 22K, 27K, 30K, 35K, 40K, 50K
Cut out 2.5" | Height 1.3"
IC Rated



VOR25TMS - 4HEAD TRIMLESS

9W | 14W
800LM | 1100LM
18K, 22K, 27K, 30K, 35K, 40K, 50K
Cut out 2.5" | Height 1.3"
IC Rated

ACCESSORIES

- Trim Color: White, Black
- New construction plate available

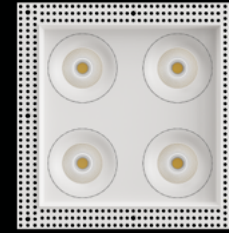
ACCESSORIES

- Trim Color: White, Black
- New construction plate available



VOR35 - 4HEAD SQUARE

15W
1250LM
18K, 22K, 27K, 30K, 35K, 40K, 50K
Cut out 3.5" | Height 1.3"
IC Rated



VOR35TMS - 4HEAD SQUARE TRIMLESS

15W
1250LM
18K, 22K, 27K, 30K, 35K, 40K, 50K
Cut out 2.5" | Height 1.3"
IC Rated



VOR35 - 2HEAD

15W
1250LM
18K, 22K, 27K, 30K, 35K, 40K, 50K
Cut out 3.5" | Height 1.3"
IC Rated



VOR35TMS - 2HEAD TRIMLESS

15W
1250LM
18K, 22K, 27K, 30K, 35K, 40K, 50K
Cut out 3.5" | Height 1.3"
IC Rated



VOR35 - 3HEAD

15W
1250LM
18K, 22K, 27K, 30K, 35K, 40K, 50K
Cut out 3.5" | Height 1.3"
IC Rated

ADDITIONAL INFO

- Input Voltage: 120-277V
- Beam Angle: 15° / 24° / 36° / 50°



VOR35TMS - 3HEAD TRIMLESS

15W
1250LM
18K, 22K, 27K, 30K, 35K, 40K, 50K
Cut out 3.5" | Height 1.3"
IC Rated

ADDITIONAL INFO

- Input Voltage: 120-277V
- Beam Angle: 15° / 24° / 36° / 50°



VOR35 - 4HEAD

15W
1250LM
18K, 22K, 27K, 30K, 35K, 40K, 50K
Cut out 3.5" | Height 1.3"
IC Rated

ACCESSORIES

- Trim Color: White, Black
- New construction plate available



VOR35TMS - 4HEAD TRIMLESS

15W
1250LM
18K, 22K, 27K, 30K, 35K, 40K, 50K
Cut out 3.5" | Height 1.3"
IC Rated

ACCESSORIES

- Trim Color: White, Black
- New construction plate available

28 LUCID DOWNLIGHT

The Lucid series embodies simplicity with its sleek, ultra-thin silhouette that virtually disappears into ceilings, maintaining a clean, uncluttered look. Designed with a focus on understated beauty, these downlights enhance spaces without drawing attention, making them the perfect choice for those who appreciate subtle, refined aesthetics in their lighting solutions.





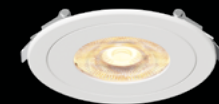
LCD-RD | ROUND

9W
900LM
2700K, 3000K, 3500K, 4000K, 5000K Selectable
Beam Angle 120°
Cut out 4" | Height 1"
IC Rated



LCD-SQ | SQUARE

9W
900LM
2700K, 3000K, 3500K, 4000K, 5000K Selectable
Beam Angle 120°
Cut out 4" | Height 1"
IC Rated



LCD-RD-LS | ROUND DIAMOND LENS

15W
1200LM
2700K, 3000K, 3500K, 4000K, 5000K Selectable
Beam Angle 15° / 24° / 36° / 50°
Cut out 4" | Height 1.375"
IC Rated

ADDITIONAL INFO

• Input Voltage: 120-277V

FINISH

- Black, White, Brushed Nickel, Bronze, Copper



LCD-RDD | ROUND DOUBLE

12W x 2
1920LM
2700K, 3000K, 3500K, 4000K, 5000K Selectable
Beam Angle 90°
Cut out 8.625" | Height 1.25"
IC Rated



LCD-SQD | SQUARE DOUBLE

15W x 2
2400LM
2700K, 3000K, 3500K, 4000K, 5000K Selectable
Beam Angle 90°
Cut out 8.625" | Height 1.25"
IC Rated



LCD-RDD-LS | ROUND DOUBLE DIAMOND LENS

12W x 2
1980LM
2700K, 3000K, 3500K, 4000K, 5000K Selectable
Beam Angle 15° / 24° / 36° / 50°
Cut out 10" | Height 1.5"
IC Rated

ADDITIONAL INFO

• Input Voltage: 120-277V

FINISH

- Black, White, Brushed Nickel, Brass, Wood, Custom (Inquire)



LCD-RDD-DL | ROUND DOUBLE DROP LENS

12W x 2
2400LM
2700K, 3000K, 3500K, 4000K, 5000K Selectable
Beam Angle 120°
Cut out 8.625" | Height 1.25"
IC Rated



LCD-SQD-DL | SQUARE DOUBLE DROP LENS

15W x 2
3000LM
2700K, 3000K, 3500K, 4000K, 5000K Selectable
Beam Angle 120°
Cut out 8.625" | Height 1.25"
IC Rated

ADDITIONAL INFO

• Input Voltage: 120-277V

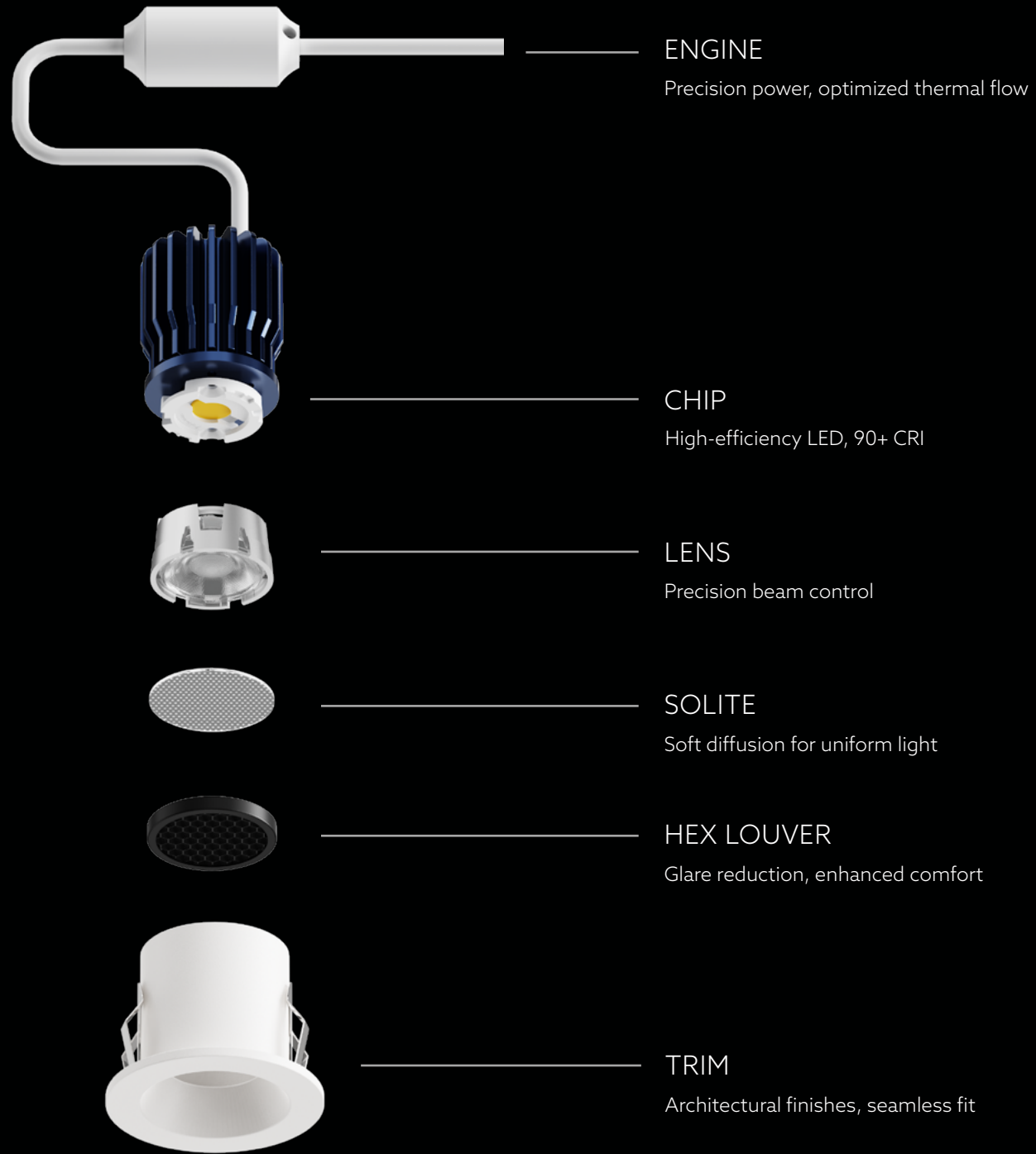
FINISH

- Black, White, Brushed Nickel, Custom (Inquire)

36 RYNO DOWNLIGHT

The Ryno Series is a family of precision-engineered recessed LED downlights spanning 1", 2.5", and 3" apertures, delivering scalable performance from refined accent lighting to high-output general illumination. Featuring selectable wattages, 2700K-4000K and Dim-to-Warm, narrow-to-wide beam spreads, and configurations including trimmed, trimless, millwork, adjustable, and wallwash, it offers a complete, spec-grade solution for seamless architectural integration





RYN1 - ROUND / SQUARE TRIMED

5W | 7W | 10W
450LM | 560LM | 875LM
27K, 30K, 35K, 18K-30K Dim to Warm
Height 2.64"
IC Rated



RYN1TMS - TRIMLESS

5W | 7W | 10W
450LM | 560LM | 875LM
27K, 30K, 35K, 18K-30K Dim to Warm
Height 2.8"
IC Rated



RYN1MLWR - MILLWORK

5W | 7W | 10W
450LM | 560LM | 875LM
27K, 30K, 35K, 18K-30K Dim to Warm
Height 2.8"
IC Rated



RYN1ADJR - ADJUSTABLE

5W | 7W | 10W
450LM | 560LM | 875LM
27K, 30K, 35K, 18K-30K Dim to Warm
Height 3.15"
IC Rated

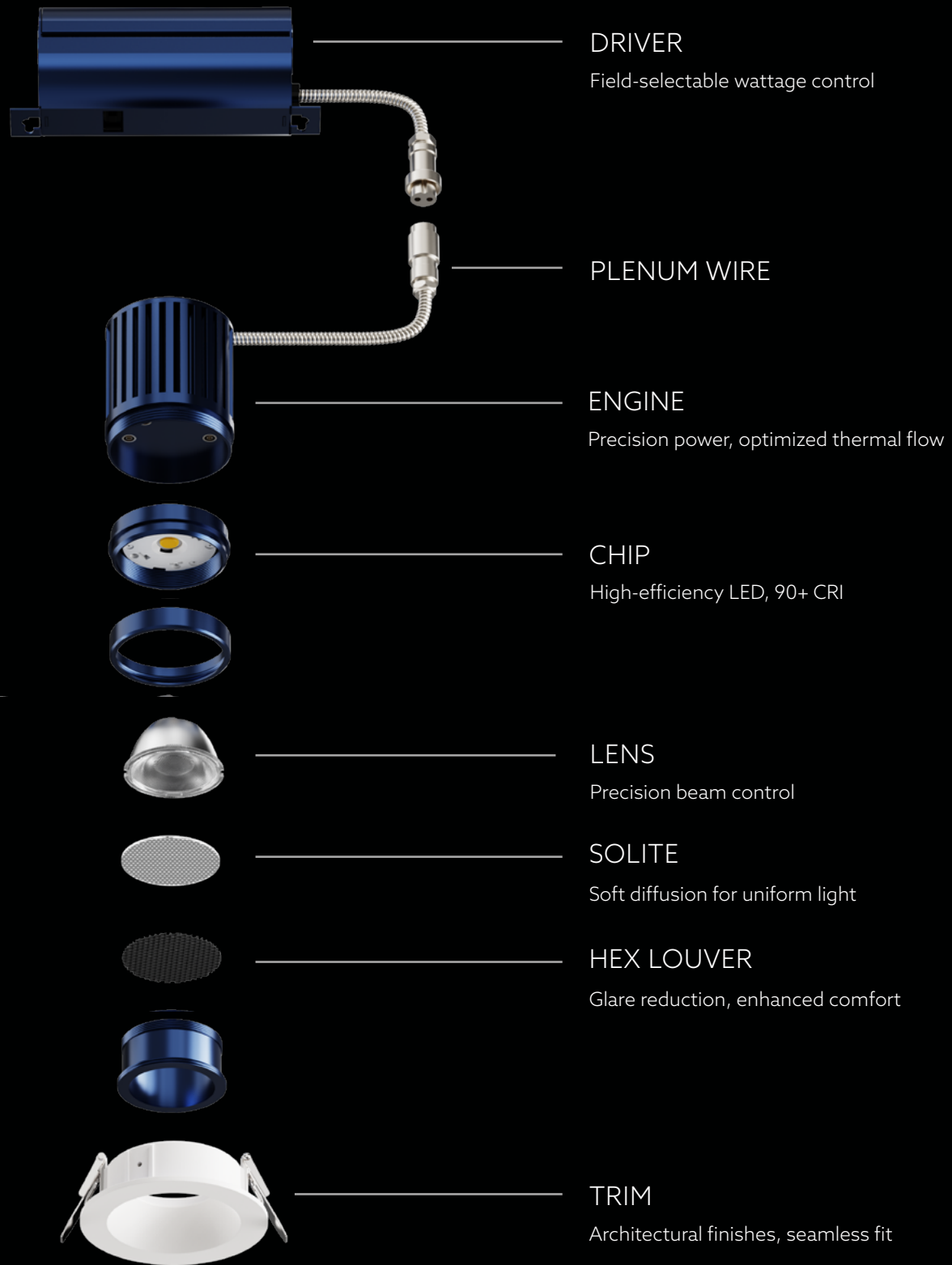
ADDITIONAL INFO

- Input Voltage: 24V
- Dimming: PWM, Triac, 0-10V
- Beam Angle: 10° / 15° / 24° / 36° / 50°

ACCESSORIES

- Hex Louver Lens
- Solite Lens
- Remote Power Supply

RYNO 23





RYN23 - ROUND / SQUARE TRIMMED

Size 2.5" | 3"
9W | 12W | 15W Selectable
27K, 30K, 35K, 40K, 18K-30K Dim to Warm
Height 4.375"
IC Rated



RYN23TMSR - TRIMLESS

Size 2.5" | 3"
9W | 12W | 15W Selectable
27K, 30K, 35K, 40K, 18K-30K Dim to Warm
Height 4.375"
IC Rated



RYN23MLWR - MILLWORK

Size 2.5" | 3"
9W | 12W | 15W Selectable
27K, 30K, 35K, 40K, 18K-30K Dim to Warm
Height 4.375"
IC Rated



RYN23WLSH - WALLWASH

Size 2.5" | 3"
9W | 12W | 15W Selectable
27K, 30K, 35K, 40K, 18K-30K Dim to Warm
Height 4.625"
IC Rated



RYN23ADJR - ROUND ADJUSTABLE

Size 2.5" | 3"
9W | 12W | 15W Selectable
27K, 30K, 35K, 40K, 18K-30K Dim to Warm
Height 4.375"
IC Rated



RYN23ADJRTMS- TRIMLESS ADJUSTABLE

Size 2.5" | 3"
9W | 12W | 15W Selectable
27K, 30K, 35K, 40K, 18K-30K Dim to Warm
Height 4.375"
IC Rated



RYN23ADJRMLWK - MILLWORK ADJUSTABLE

Size 2.5" | 3"
9W | 12W | 15W Selectable
27K, 30K, 35K, 40K, 18K-30K Dim to Warm
Height 4.375"
IC Rated

ACCESSORIES

- Trim Color: White, Black
- New construction plate available NCH-RYN23
- Hex Louver Lens
- Solite Lens

ADDITIONAL INFO

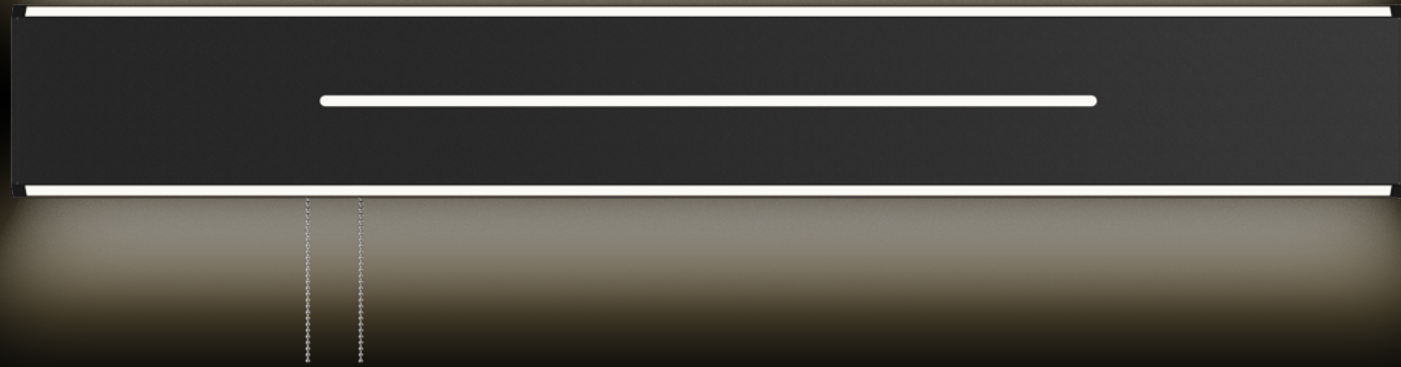
- Input Voltage: 120-277V
- Lumens: Up to 117LM/W
- Dimming: Triac / 0-10V
- Beam Angle: 8° / 15° / 24° / 36° / 50°

44 PARKLINE OVERBED

The Parkline Overbed Light was meticulously designed with the intention of providing the Hospitality Industry with a solution that would exceed any expectation. An equal combination of aesthetic and maximum performance harmoniously powers the Parkline. The 3 directional lights provide multiple options for illumination such as a Reading Light, Ambient Light and a Night Light which can function individually as well as in unison. Standard finish options include White, Brushed Nickel, Gold and Black. Custom finishes and lengths are available to meet the exact vision imagined. Field selectable Wattage and Color Temperature switches located behind the fixture grant the flexibility to add yet another customized feel to any room they are placed in.



PARKLINE™



POL-2-CCT

2 FT
10W / 15W / 20W + 5W
30K / 35K / 40K 3CCT Selectable

POL-3-CCT

3 FT
10W / 20W / 30W + 5W
30K / 35K / 40K 3CCT Selectable

POL-4-CCT

4 FT
20W / 30W / 40W + 5W
30K / 35K / 40K 3CCT Selectable

STARTING OPTION

Pull Chain
1 FT | 2 FT | 3 FT | Custom
Left | Center | Right
Wire | Wireless

FINISHES

White
Black
Gold
Brushed Nickel
Custom

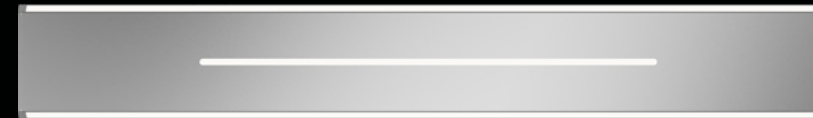
Black



White



Brushed Nickel



Gold



Pine



Maple



Walnut



WALL SCONCE

POL-2-CCT

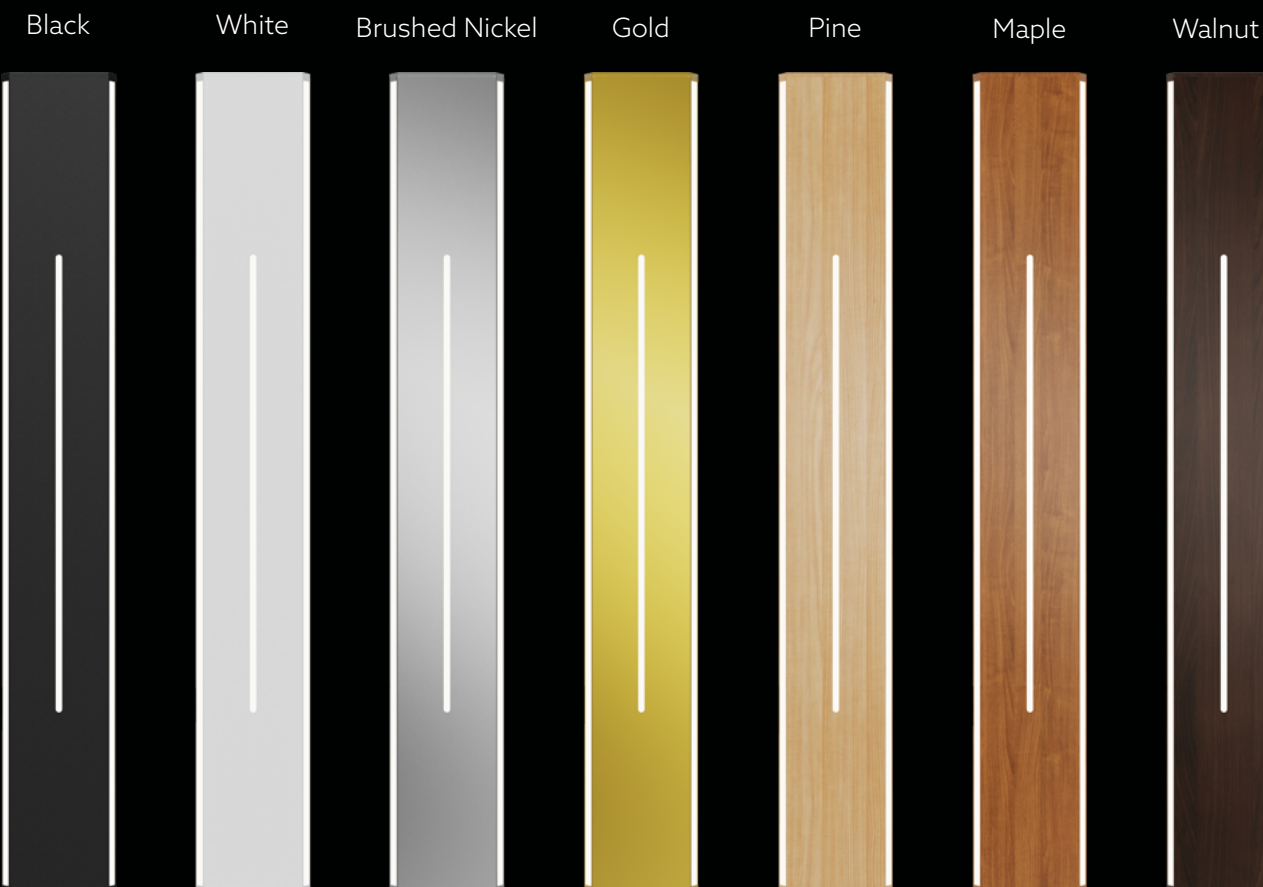
2 FT
10W / 15W / 20W + 5W
27K / 30K / 35K / 40K / CCT

POL-3-CCT

3 FT
10W / 20W / 30W + 5W
27K / 30K / 35K / 40K / CCT

FINISHES

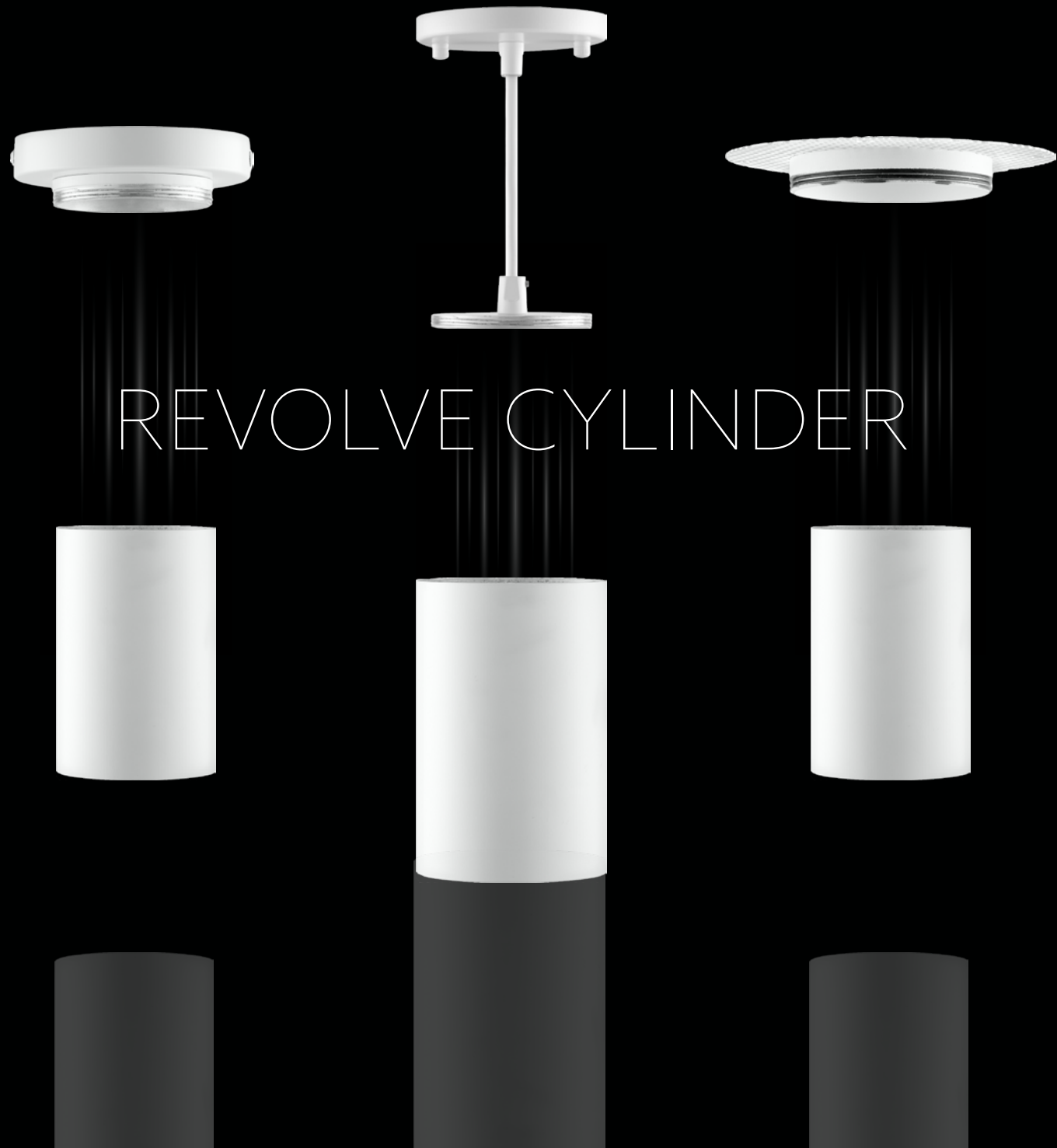
White
Black
Gold
Brushed Nickel
Custom



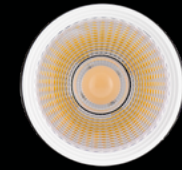


50 REVOLVE CYLINDER

The Revolve Cylinder Series provides a minimalistic lighting element to your space. The Black and White finish options allow you to match your fixture to your aesthetic. The interchangeable Mounting Kits ensure smooth installation and a versatile adaptation



REVOLVE CYLINDER



CYL

Cylinder Module
20W
1800LM
Black | White



CYL-SFC

Surface Mounting Kit
Black | White
4.72" x 5.87"



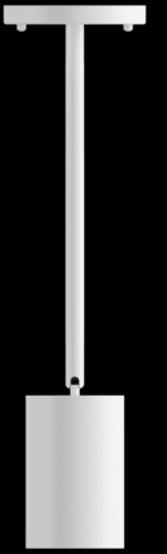
CYL-TMS

Trimless Mounting Kit
Black | White
5.20" x 5.24"



CYL-PDT

Pendant Mounting Kit
Black | White
4.72" x 5.08"



CYL-STM

Stem Mounting Kit
Black | White
4.7" x 5.09"

ADDITIONAL INFO

- CCT: 2700K, 3000K, 3500K, 4000K, 5000K Selectable
- Input Voltage: 120V or 277V
- Dimming: 0-10V & Triac Dimming

EM BATTERY BACKUP OPTION



54 STRIKE ARCHITECTURAL STRIP LIGHT

The Strike series grants creative opportunities that are seldom seen in the Lighting industry. Each space can be uniquely transformed by these LED Linear Strips. Unlimited shapes and formations can be designed to ensure a timeless intrigue. The COB Strip technology creates a seamless and transitional light output, without any interruptions such as with standard LED Chips. Black and White finishes available.





STRIKE

Inspire endless curiosity in your space

STK

4.6W/FT
412LM/FT
Custom Length available up to 40FT

Color Temperature

2700K
3000K
3500K
4000K
5000K

FINISHES

Black
White (Custom order)

ADDITIONAL INFO

- Runs cannot exceed 20 feet per home run
- Maximum driver distance of 20 feet before voltage drop (with 18 gauge wire)
- Compatible with electronic driver only

ACCESSORIES

- Drivers:
STK-96-DIM
STK-120-DIM
STK-200-DIM
STK-300-DIM

58 ROVE LINEAR

The Rove Linear is a versatile lighting fixture that seamlessly blends form and function, making it the perfect addition to any space. Its sleek and minimalistic design allows it to complement any existing architectural elements, while also adding a touch of sophistication to the room.





ROVE

LINKABLE LINEAR

RVE-2

2 FT
25W | 2375LM
30K / 35K / 40K
24" x 1.65" x 1.62"

RVE-3

3 FT
30W | 2850LM
30K / 35K / 40K
36" x 1.65" x 1.62"

RVE-4

4 FT
34W | 3230LM
30K / 35K / 40K
48" x 1.65" x 1.62"

RVE-5

5 FT
40W | 3800LM
30K / 35K / 40K
60" x 1.65" x 1.62"

RVE-6

6 FT
60W | 5700LM
30K / 35K / 40K
72" x 1.65" x 1.62"

FINISHES

Black
White
Brushed Nickel
Custom

ACCESSORY TYPE

X
T
L

DRIVER

Non-Dimmable
0-10V

LIGHT DIRECTION

Direct
Direct/Indirect

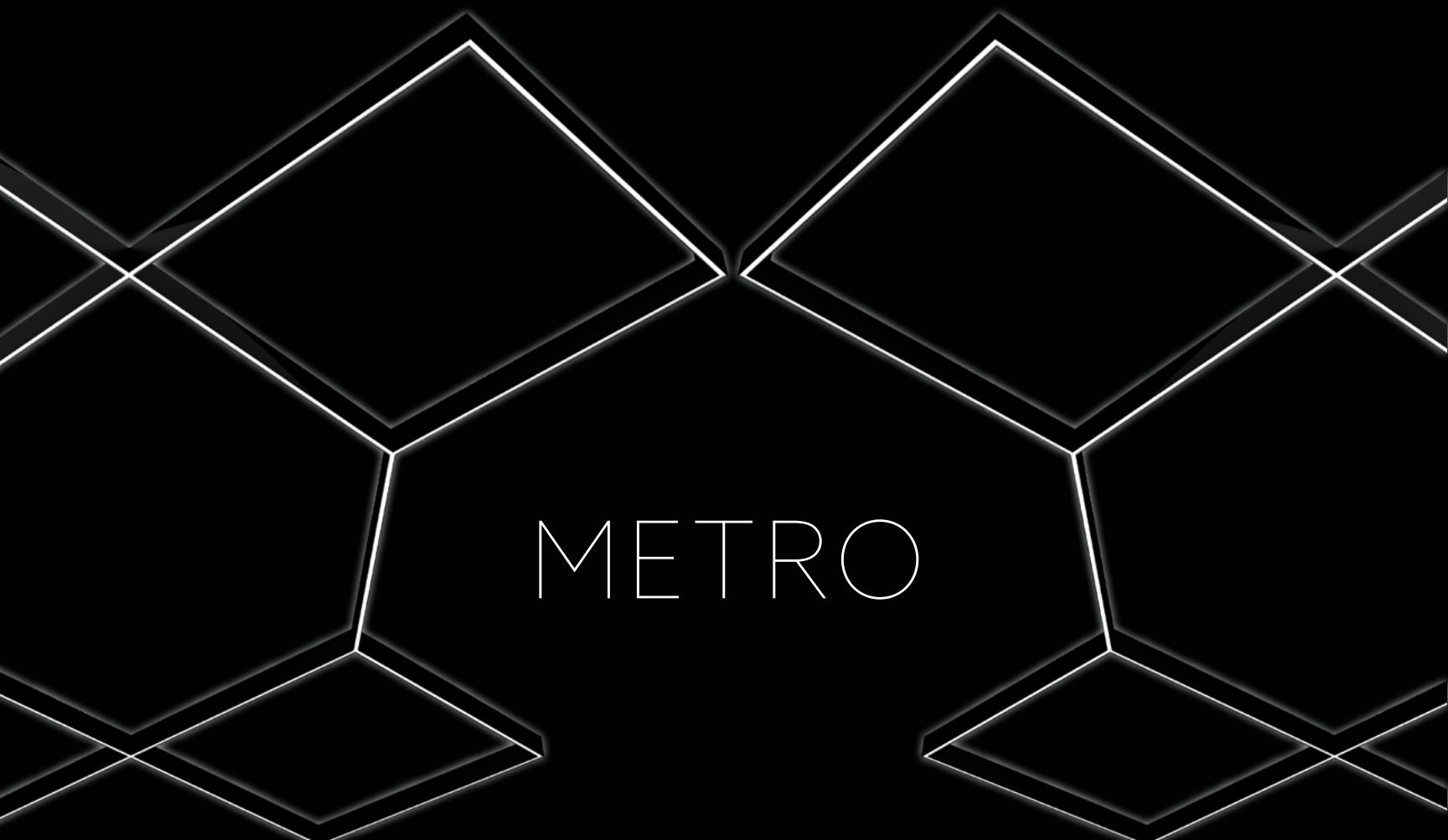
ADDITIONAL INFO

- 100-277V
- Max run 400W
- Adjustable Suspension up to 5ft
- Internal Driver

62 METRO LINEAR

The Metro Linear is a versatile lighting fixture that seamlessly blends form and function, making it the perfect addition to any space. Its sleek and minimalistic design allows it to complement any existing architectural elements, while also adding a touch of sophistication to the room.





METRO

LIGHT DIRECTION

Direct
Direct/Indirect

DRIVERS

100-277V (Non-Dimmable)
0-10V

ACCESSORIES

L
T
V
X
Y

MTO-2

2FT
25W | 2125 LM
30K, 35K, 40K
24" x 0.78" x 3.7"

MTO-3

3FT
30W | 2550LM
30K, 35K, 40K
36" x 0.78" x 3.7"

MTO-4

4FT
34W | 2890LM
30K, 35K, 40K
48" x 0.78" x 3.7"

MTO-5

5FT
40W | 3400LM
30K, 35K, 40K
60" x 0.78" x 3.7"

MTO-6

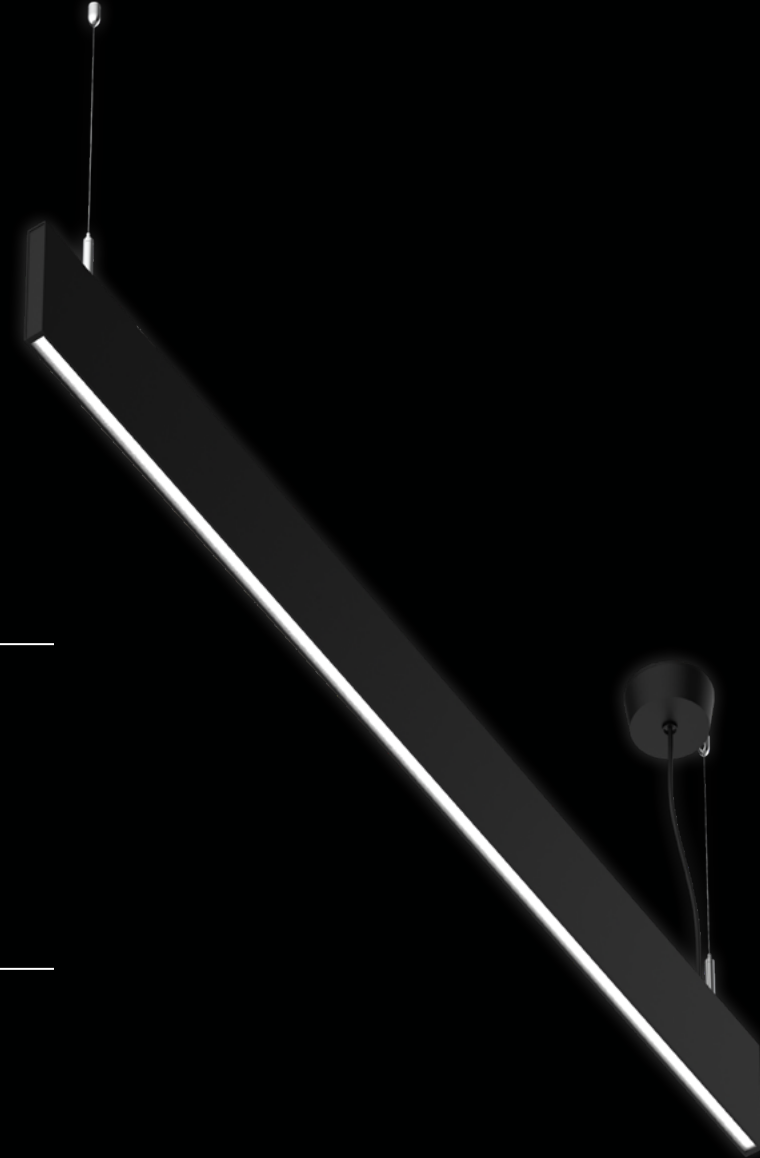
6FT
60W | 5100LM
30K, 35K, 40K
72" x 0.78" x 3.7" w

FINISHES

Black
White
Brushed Nickel
Custom

ADDITIONAL INFO

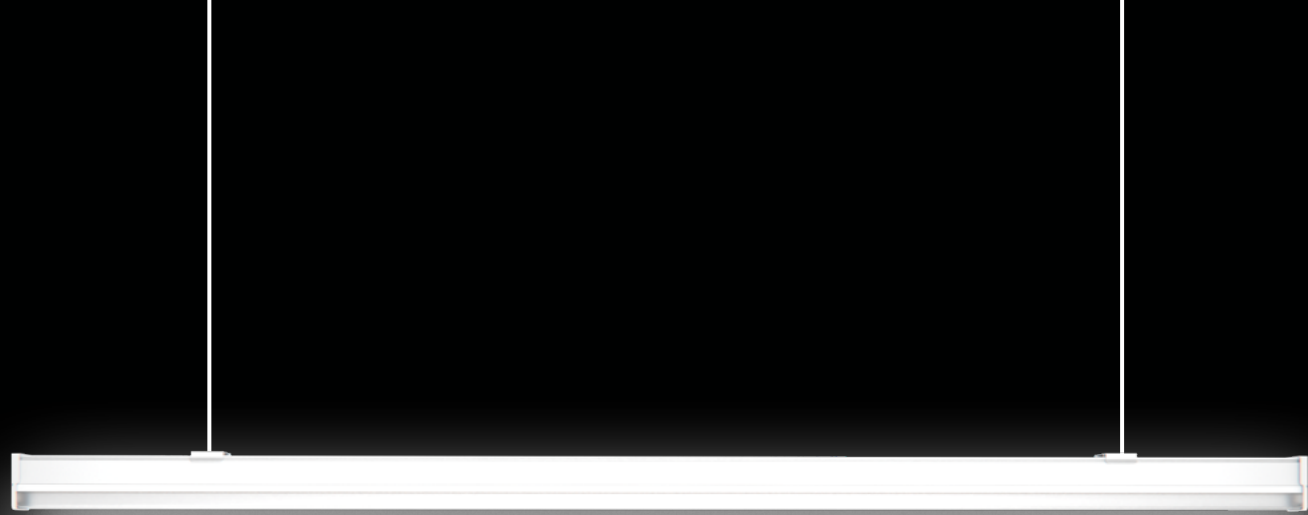
- Max run 400W
- Adjustable Suspension up to 5ft



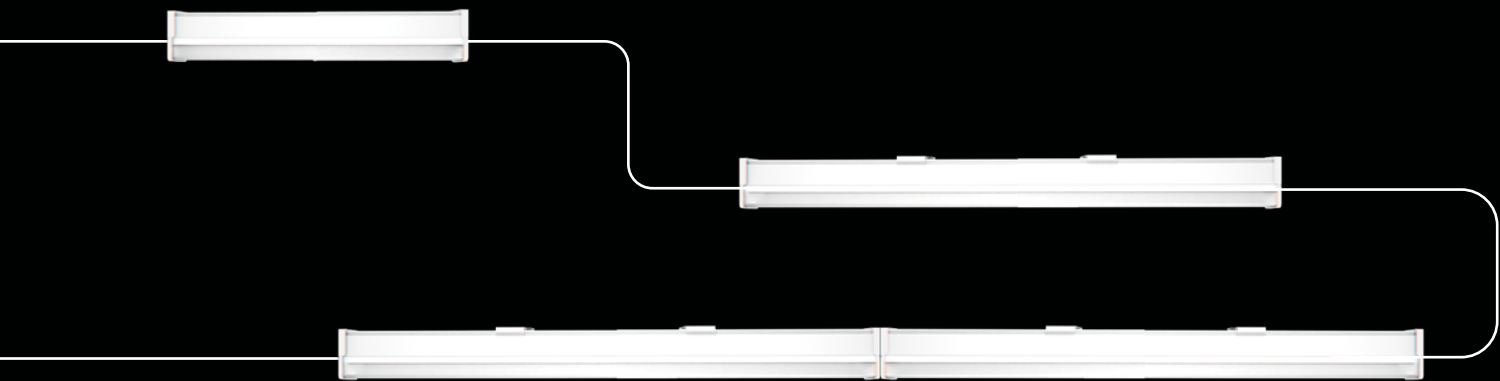
66 LEXLINE LINEAR

The minimalistic silhouette of the Lexline showcases the modern design that elevates the new generation of lighting. The sleek aluminum body is available in White, Brushed Nickel, and Black finishes so that you may choose whichever aesthetic fits your desire. Each Lexline can be linked to create a continuous line of seamless illumination. Options for Emergency battery Backup and Motion sensor configuration are available as well. The Lexline is ETL, CETL and Energy star approved, with a 5 year warranty.





LEXLINE



LEX

1FT | 10W | 1100LM
 2FT | 20W | 2000LM
 3FT | 30W | 2900LM
 4FT | 40W | 4400LM
 6FT | 60W | 5900LM
 8FT | 80W | 8000LM

COLOR TEMPERATURE

3000K
 4000K
 5000K
 CCT Adj.

CONFIGURATION

Emergency Battery
 Motion Sensor
 EM+MS

FINISHES

White | Black | Brushed Nickel

DRIVER

Non-Dimmable
 0-10

APPLICATION

Surface
 Suspended

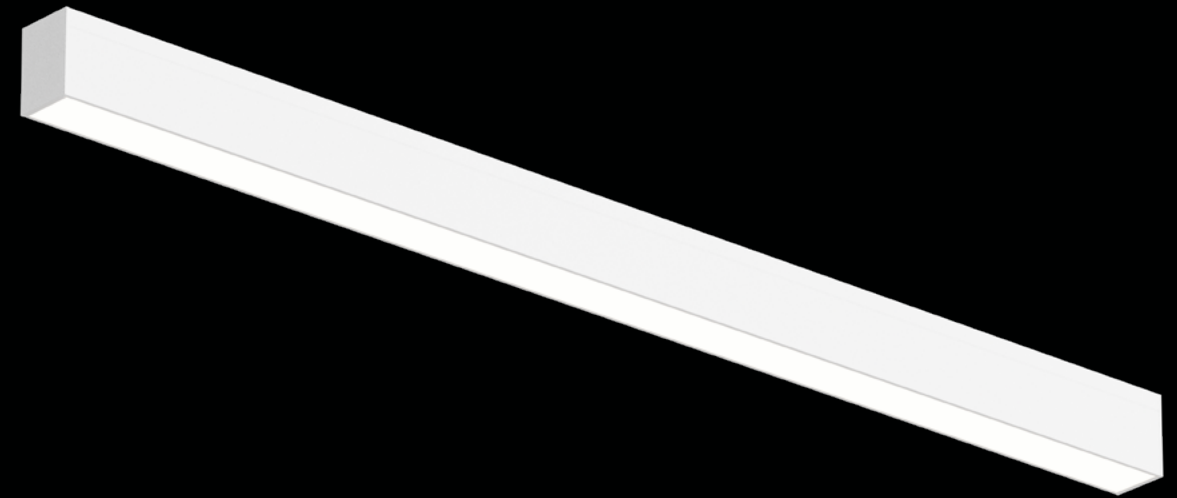
ACCESSORIES

4 FT Suspension Wire
 Bridge Connector
 Power Cable
 Couplings Connectors

70 FUSE LINEAR

The Fuse Linkable Linear Series offers versatile, customizable lighting for surface, wall, recessed, and pendant applications. With adjustable wattage, CCT, and independent up/down light control, it provides tailored solutions for any project. Seamless linking, universal voltage, and optional emergency battery or motion sensor enhance its adaptability for architectural lighting needs





FSE

2FT | 10W/15W/20W/25W Selectable
3FT | 20W/25W/30W/35W Selectable
4FT | 35W/40W/45W/50W Selectable
8FT | 60W/75W/90W/100W Selectable

APPLICATION

Surface
Wall
Recessed
Suspended

COLOR TEMPERATURE

27K/30K/35K/40K/50K Selectable

FINISHES

White
Black
Wood
Custom

CONFIGURATION

Emergency Battery
Motion Sensor
EM+MS

LIGHT DIRECTION

Direct
Direct/Indirect

ACCESSORIES

L Shape
V Shape
T Shape
X Shape
Linking Kit

ADDITIONAL INFO

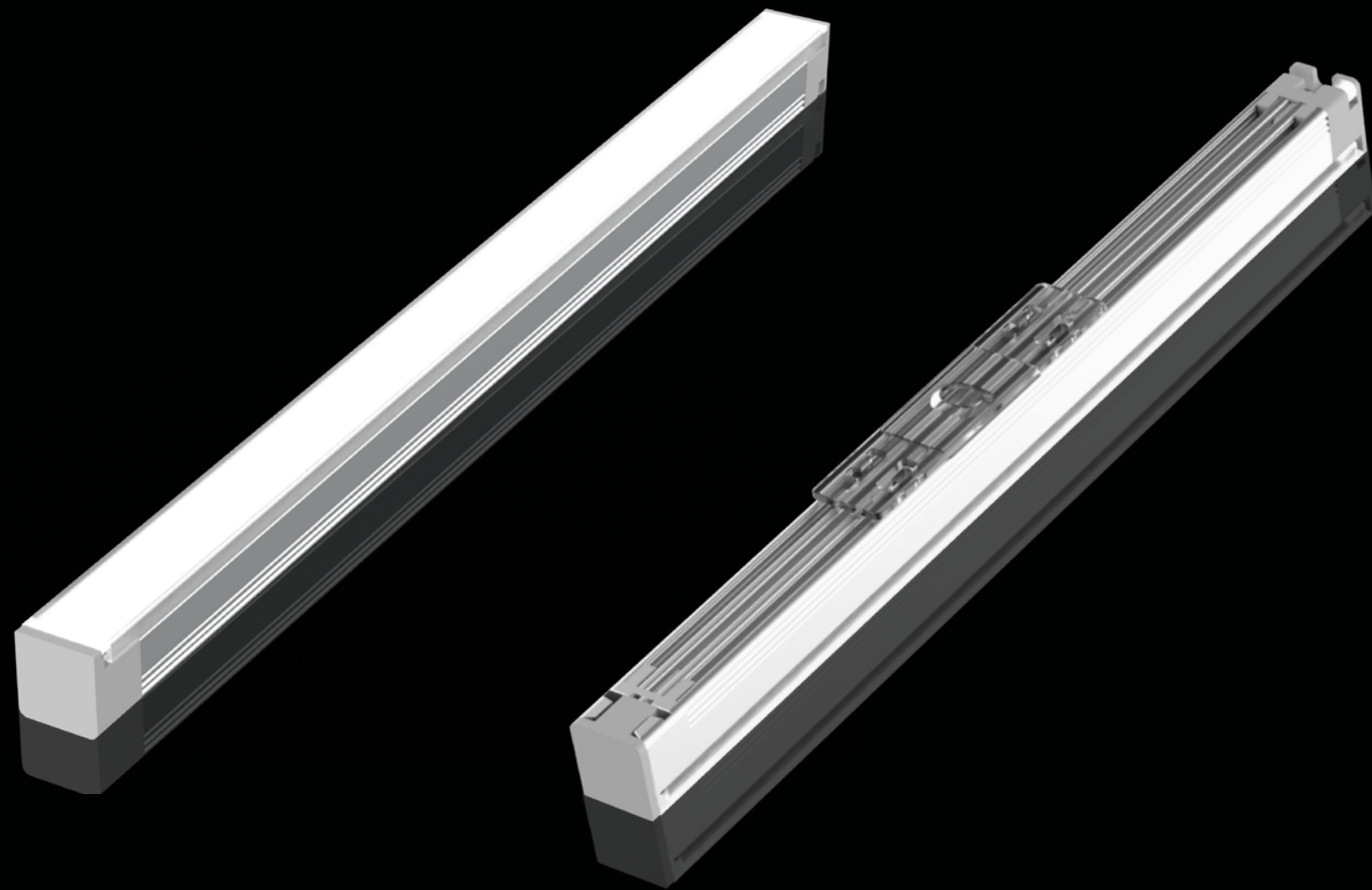
- 130LM/W
- 120-277V
- Max run 600W

74 RIB LUMINARY

The Rib Luminary is a groundbreaking lighting solution that offers a distinct and minimalist alternative to traditional strip lighting. With its seamless linking capability, the Rib Luminary provides a sleek and continuous lighting effect that is both visually appealing and highly functional. Whether you prefer an AC or DC model, this innovative luminary is designed to cater to your specific needs and requirements. Its simplicity in design and installation makes it an ideal choice for various applications



RIBDC



RIBDC

4IN | 1.3W | 91LM
8IN | 2.7W | 189LM
12IN | 4W | 280LM
23IN | 8W | 560LM
35IN | 12W | 840LM
47IN | 16W | 1120LM
59IN | 20W | 1400LM

COLOR TEMPERATURE

2700K
3000K
3500K
4000K
5000K

FINISHES

White
Black
Aluminum
Gold

ACCESSORIES

Right L
Left L
X
Inner L
Outer L
T

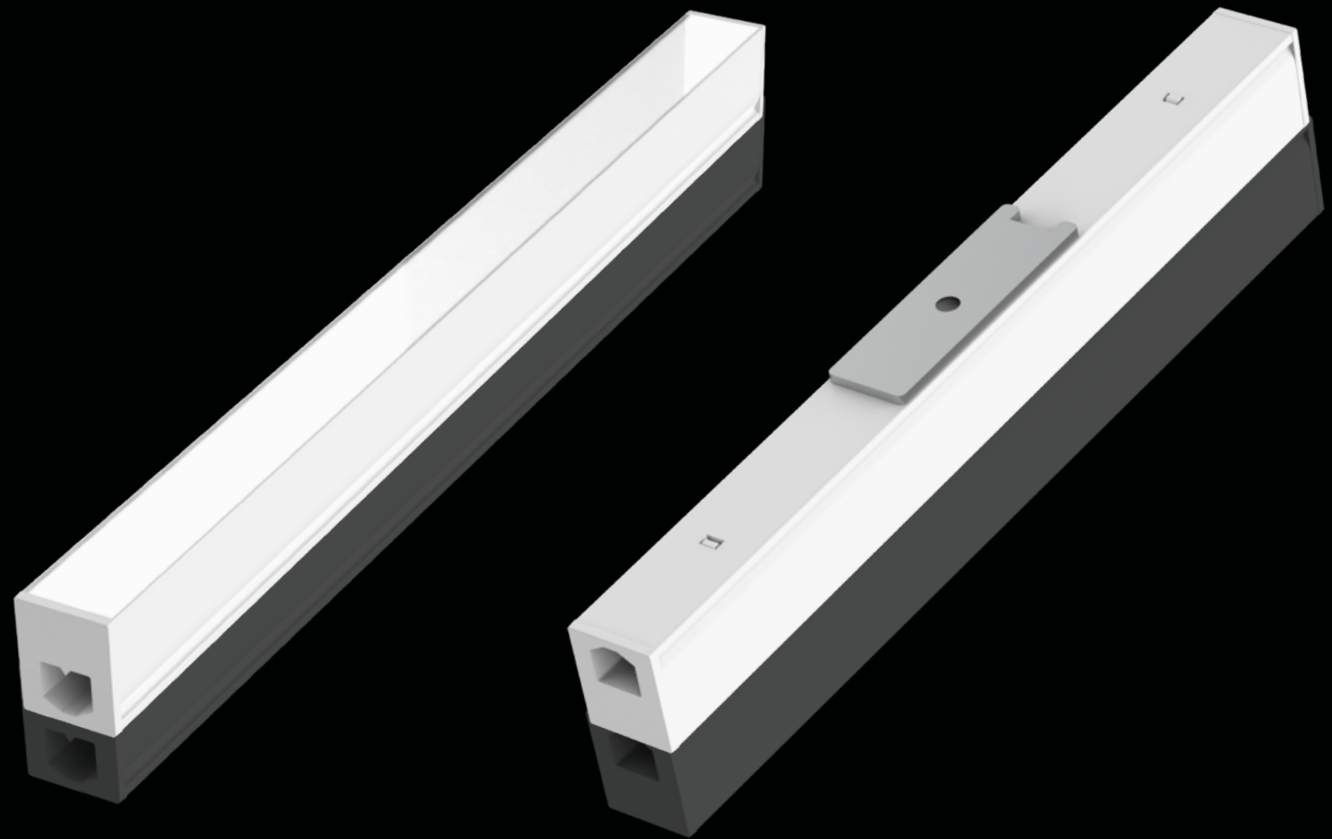
ADDITIONAL INFO

- Input Voltage: 24V
- Up to 16.4ft run
- Surface or Recessed mount
- Seamlessly linkable

WIRE ACCESSORIES

- Starter
- Coupling
- Splitter
- DC Jack Starter
- Motion Sensor
- In-line Dimmer

RIBAC



RIBAC

4IN | 1W | 70LM
6IN | 1.5W | 110LM
8IN | 2W | 140LM
12IN | 3W | 210LM
24IN | 6W | 420LM
48IN | 12W | 840LM

ADDITIONAL INFO

- Input Voltage: 120V
- Up to 36.4ft run
- Seamlessly linkable
- Multiple mounting options

COLOR TEMPERATURE

2700K
3000K
3500K
4000K
5000K

WIRE ACCESSORIES

- Junction Box
- Wire Starter
- Power Plug Starter
- Coupling Connector
- Coupling Wire Connector

FINISHES

White
Black
Aluminum
Gold

80 LEDGE COVE

Designed to seamlessly integrate into any space, the Ledge Cove Fixture offers a sleek, modern profile with superior light distribution. Perfect for creating ambient lighting that enhances the architectural contours of your projects, this fixture is as functional as it is aesthetically pleasing.



LEDGE COVE



LDG

1FT | 2FT | 4FT
8W/FT
85LM/W

COLOR TEMPERATURE

1800K
2700K
3000K
4000K
6500K

BEAM ANGLE

15 Degree
25 Degree
35 Degree
120 Degree
20 x 40 Wall Wash

DIMMING

0-10V
DALI
ON/OFF
DMX512

FINISHES

Black
White

WIRE ACCESSORIES

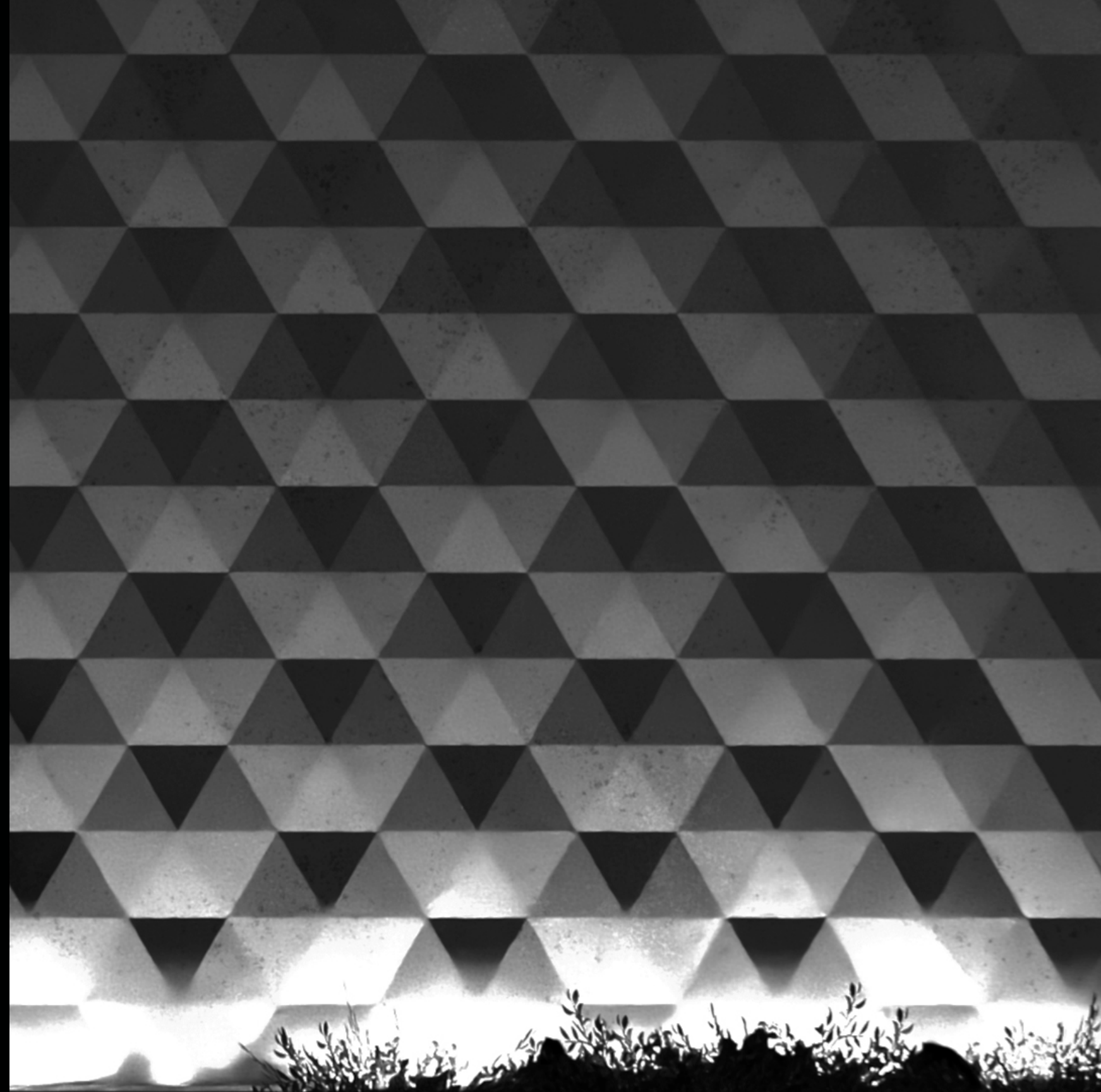
20" Starting Wire
36" Coupling Wire
72" Coupling Wire
108" Coupling Wire

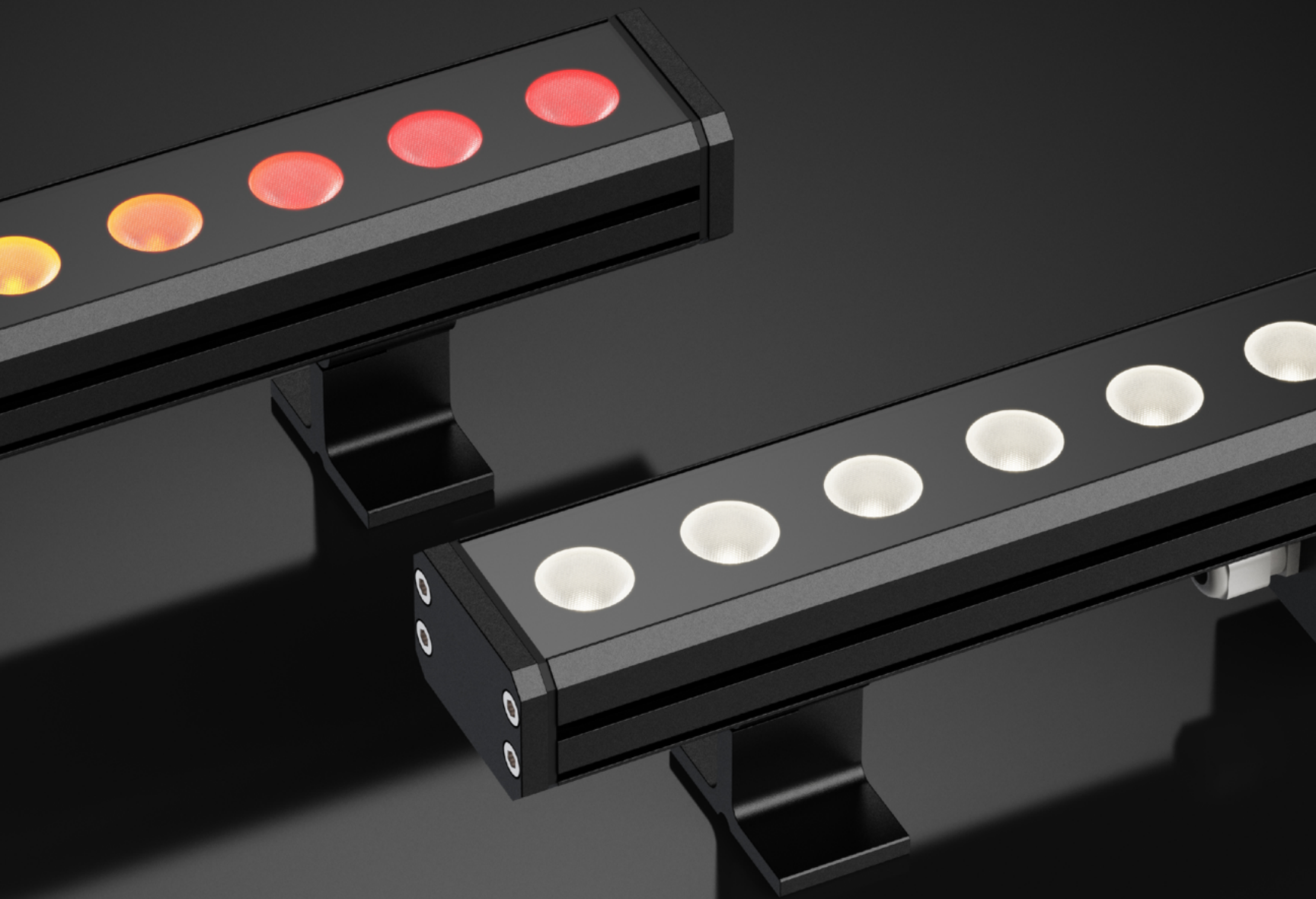
ADDITIONAL INFO

- Input Voltage: 120V/ 240V/ 120-277V
- 150 Degree Rotatable
- Powder Coated Body

84 ANCHOR WALL WASHER

The Anchor Wall Wash Linear is versatile outdoor lighting fixture that combines efficiency and aesthetics, illuminating outdoor space with precision while enhancing architectural features and creating captivating wall wash effects. Its durable construction and weather resistance make it suitable for range of applications, from building facades and landscape to walkways and plazas, providing a versatile light solution for transforming outdoor environment into visually stunning space.





ARK

1FT | 2FT | 3FT | 4FT
9W/FT
100LM/W

OPTICS

13 Degree
25 Degree
35 Degree
50 Degree
15 x 40 Wall Wash

COLOR TEMPERATURE

2700K
3000K
3500K
4000K
5000K
6000K

ARKRGBW

1FT | 2FT | 3FT | 4FT
15W/FT
50LM/W

OPTICS

13 Degree
25 Degree
35 Degree
50 Degree
20 x 50 Wall Wash

COLOR TEMPERATURE

RGB+3000K
RGB+4000K
RGB+6500K

CONTROLS

DMX
RDM

FINISHES

Gray
Black
White

DIMMING

ON/OFF
0-10V
DALI

ADDITIONAL INFO

- IP66 Wet Location Rated
- Powder Coated Body
- Universal Voltage

ACCESSORIES



ANCHOR PLUS



ARKP

1FT | 2FT | 4FT
12W/FT
100LM/W

ADDITIONAL INFO

- IP66 Wet Location Rated
- Powder Coated Body
- Universal Voltage

COLOR TEMPERATURE

2700K
3000K
3500K
4000K
5000K
6000K

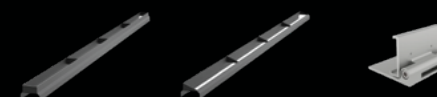
BEAM ANGLE

13 Degree
25 Degree
35 Degree
50 Degree
15 x 40 Wall Wash

DIMMING

ON/OFF
0-10V
DALI

ACCESSORIES



FINISHES

Gray
Black
White

WIRE ACCESSORIES

Power Cable
Coupling
T Joint
End Cap

ANCHOR

PIXEL



ARKX

1FT | 2FT | 3FT | 4FT
8W/FT
200LM/W

COLOR TEMPERATURE

1800K
2700K
3000K
4000K
6500K

BEAM ANGLE

Flat 120°
Round 145°

CONTROL

DMX
RDM

FINISHES

Gray
Black
White

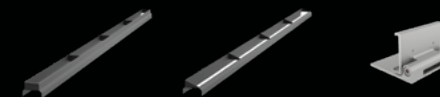
WIRE ACCESSORIES

Power Cable
Coupling
T Joint
End Cap

ADDITIONAL INFO

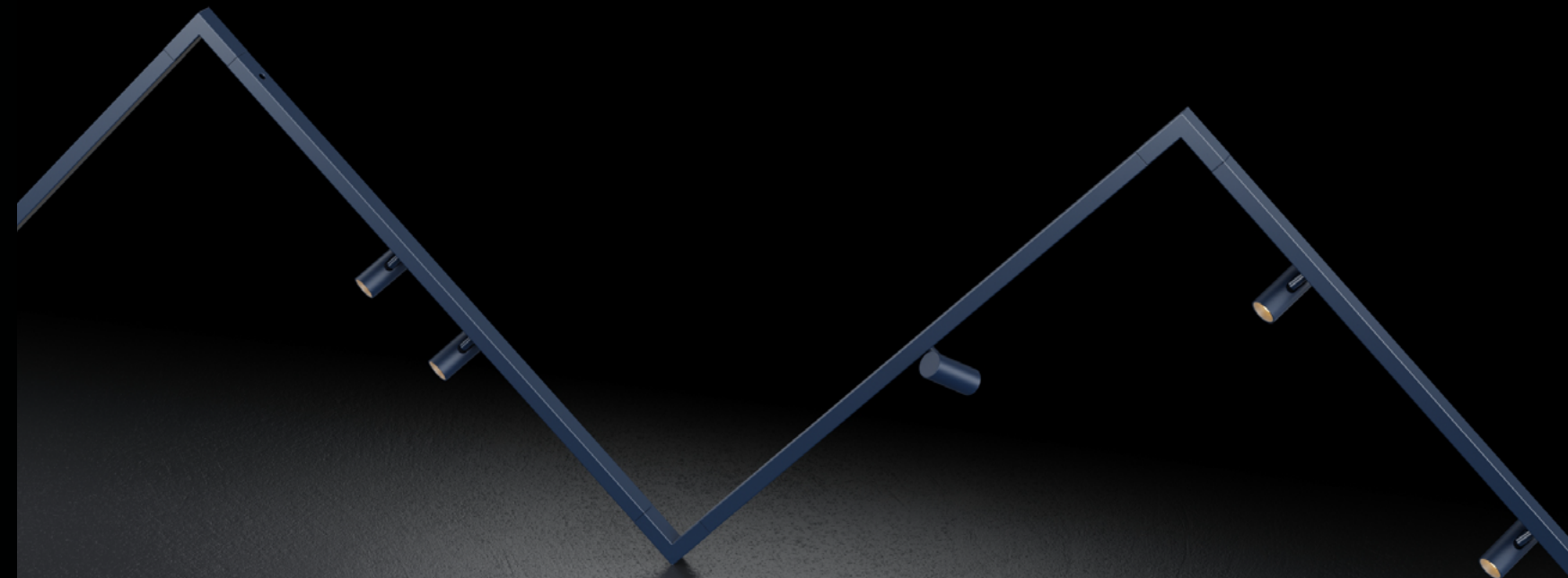
- IP66 Wet Location Rated
- Powder Coated Body
- Universal Voltage

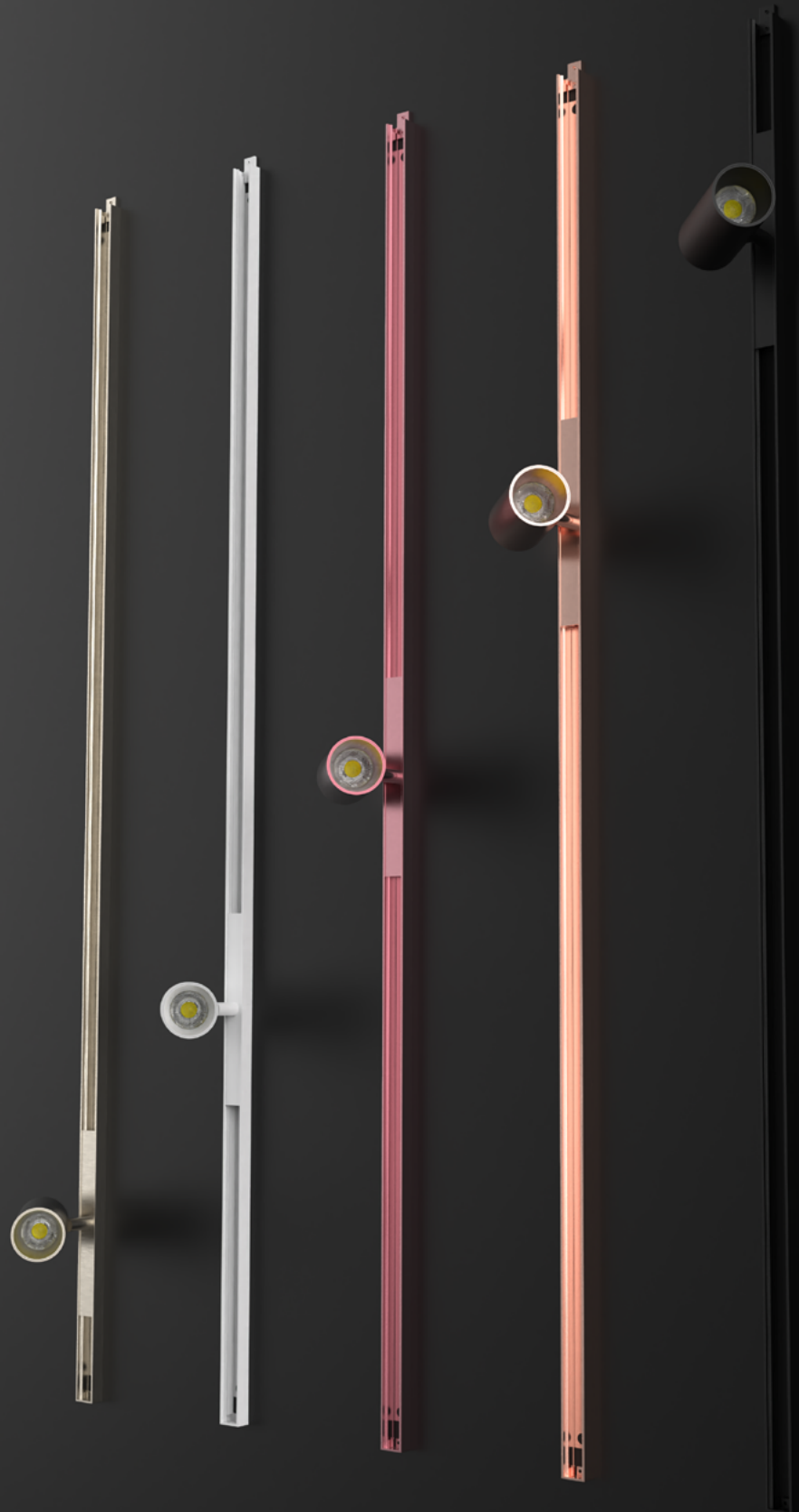
ACCESSORIES



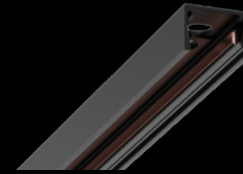
92 QUE TRACK SYSTEM

Experience the magnetic revolution in lighting with the Que Track Light System. Its ultra-slim profile seamlessly merges with any interior, while its versatile track applications and unlimited head options provide effortless customization. Highlight specific areas and set the perfect ambiance with precision. Illuminate your space like never before and embrace the future of lighting technology.



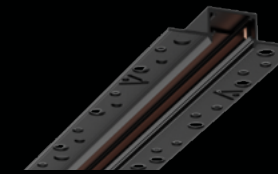


QUE TRACKS



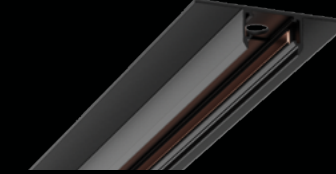
QUE-SF

SURFACE
6FT | 9FT
BLACK | WHITE | CUSTOM



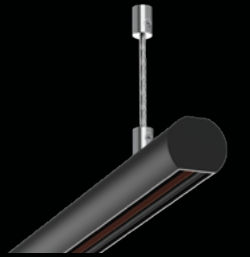
QUE-TM

TRIMLESS-MUD-IN
6FT | 9FT
BLACK | WHITE | CUSTOM



QUE-TN

TRIMLESS NON-MUD-IN
6FT | 9FT
BLACK | WHITE | CUSTOM



QUE-P

PENDANT
6FT | 9FT
BLACK | WHITE | CUSTOM

ACCESSORIES TYPE

- Starting Wire
- L Shape
- Inner L Shape
- Hard L Connector
- Flexible L Connector
- Hard Connector



ADDITIONAL INFO

- 24V System
- Magnetic installation for light heads multiple lengths and application types unlimited finish options



QUE11

3W x 2 | 5W x 2 | 7W x 2 | 10W x 2
540LM | 900LM | 1800LM
BLACK | WHITE

ADDITIONAL INFO

- Input Voltage: 24V
- CCT: 27K, 30K, 35K, 40K
- Beam Angle: 24° / 36°
- Hex Louver Lens

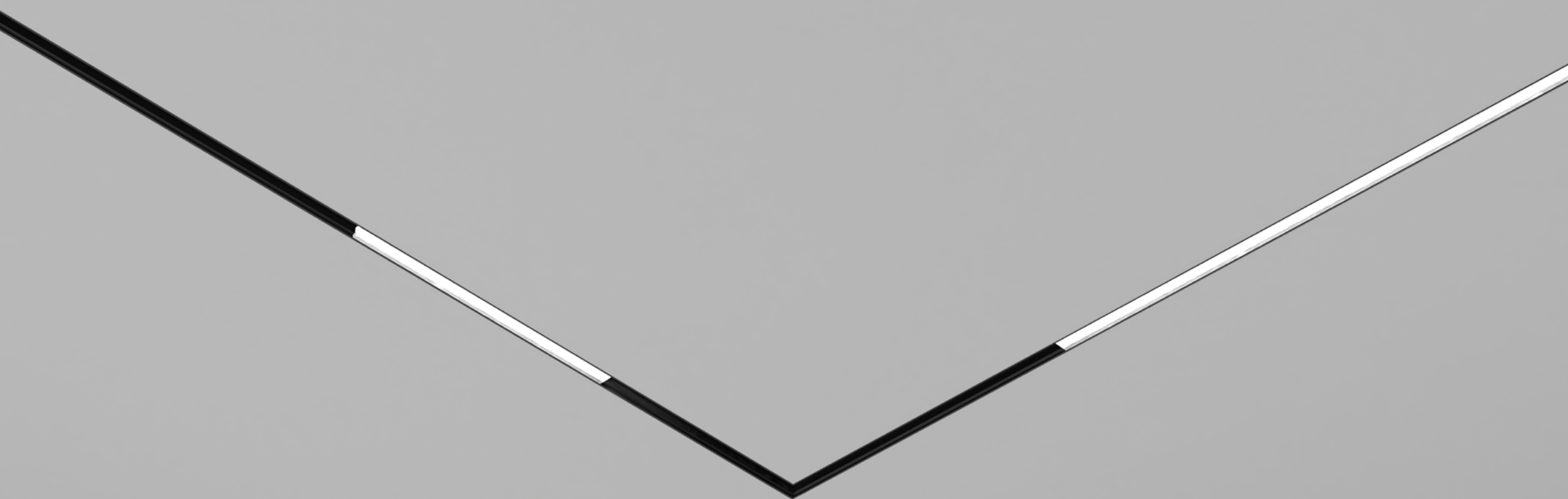


QUE14

3W | 5W | 7W | 10W
270LM | 450LM | 630LM | 900LM
BLACK | WHITE

ADDITIONAL INFO

- Input Voltage: 24V
- CCT: 27K, 30K, 35K, 40K
- Beam Angle: 24° / 36° / 45°
- Hex Louver Lens



QUE12

6W | 12W
180LM | 360LM
BLACK | WHITE

ADDITIONAL INFO

- Input Voltage: 24V
- CCT: 27K, 30K, 35K, 40K
- Beam Angle: 110°

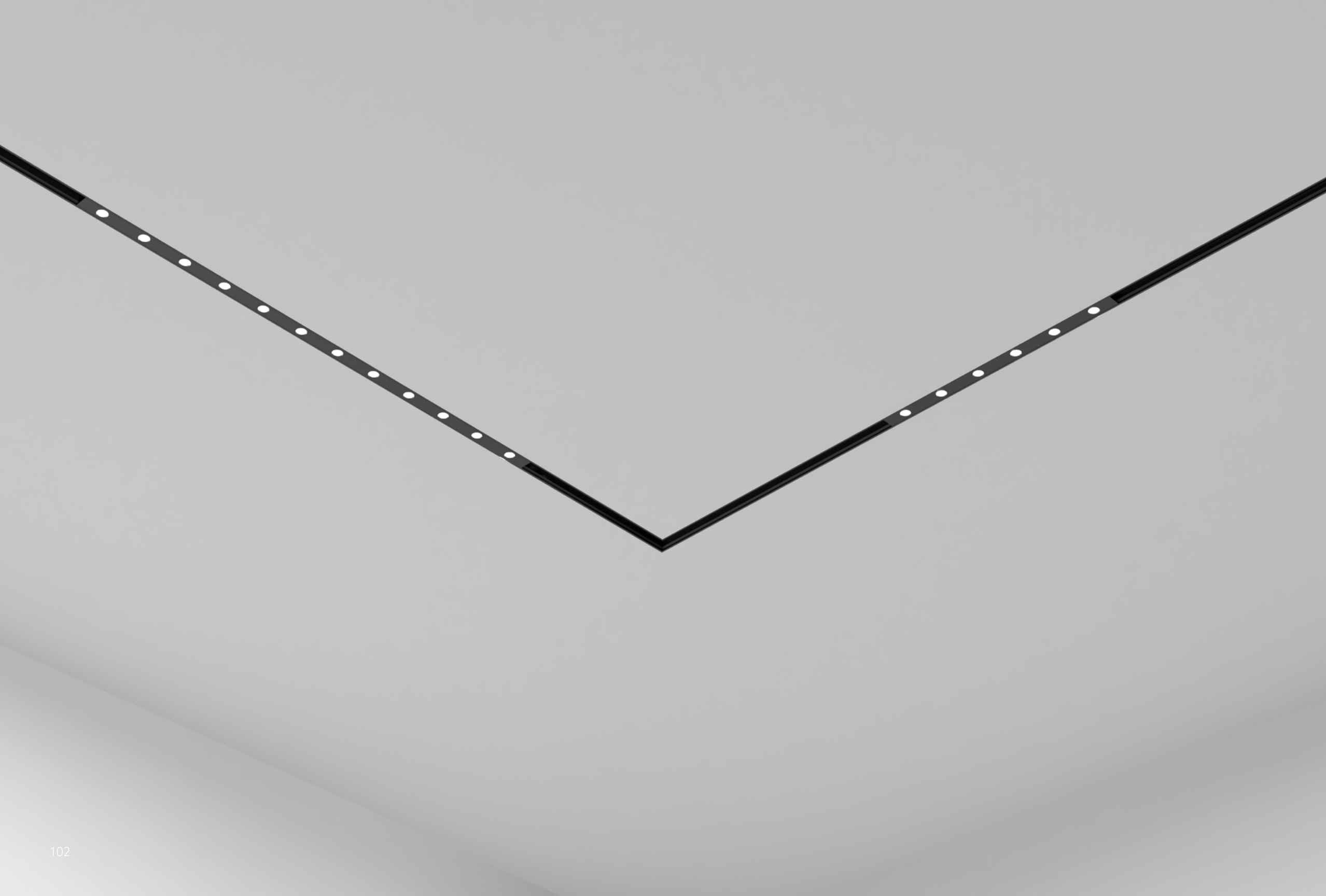


QUE10

6W | 12W
408LM | 816LM
BLACK | WHITE

ADDITIONAL INFO

- Input Voltage: 24V
- CCT: 27K, 30K, 35K, 40K
- Beam Angle: 36° / 45°

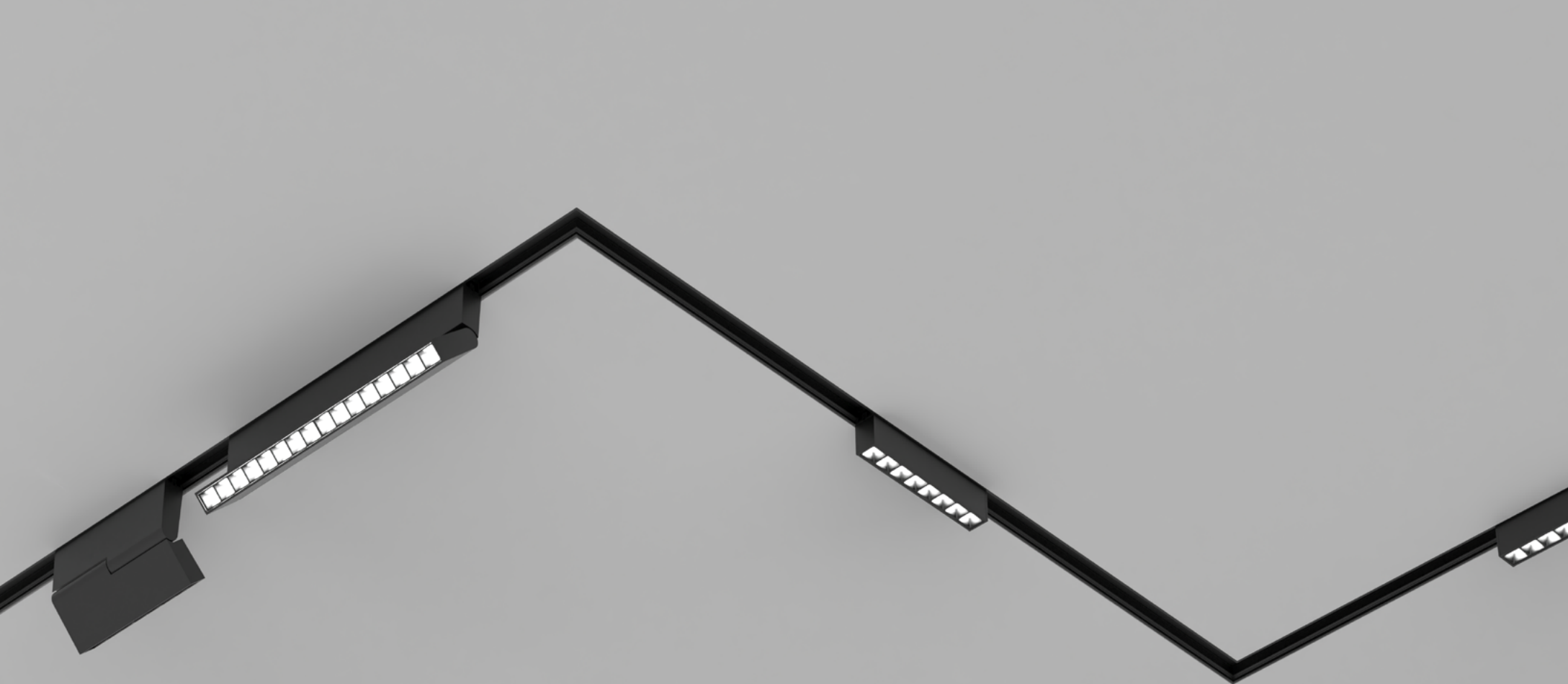


QUE13

6W | 12W
330LM | 660LM
BLACK | WHITE

ADDITIONAL INFO

- Input Voltage: 24V
- CCT: 27K, 30K, 35K, 40K
- Beam Angle: 36° / 45°



QUE16

8W | 16W
640LM | 1280LM
BLACK | WHITE

ADDITIONAL INFO

- Input Voltage: 24V
- CCT: 27K, 30K, 35K, 40K
- Beam Angle: 24° / 36° / 45°

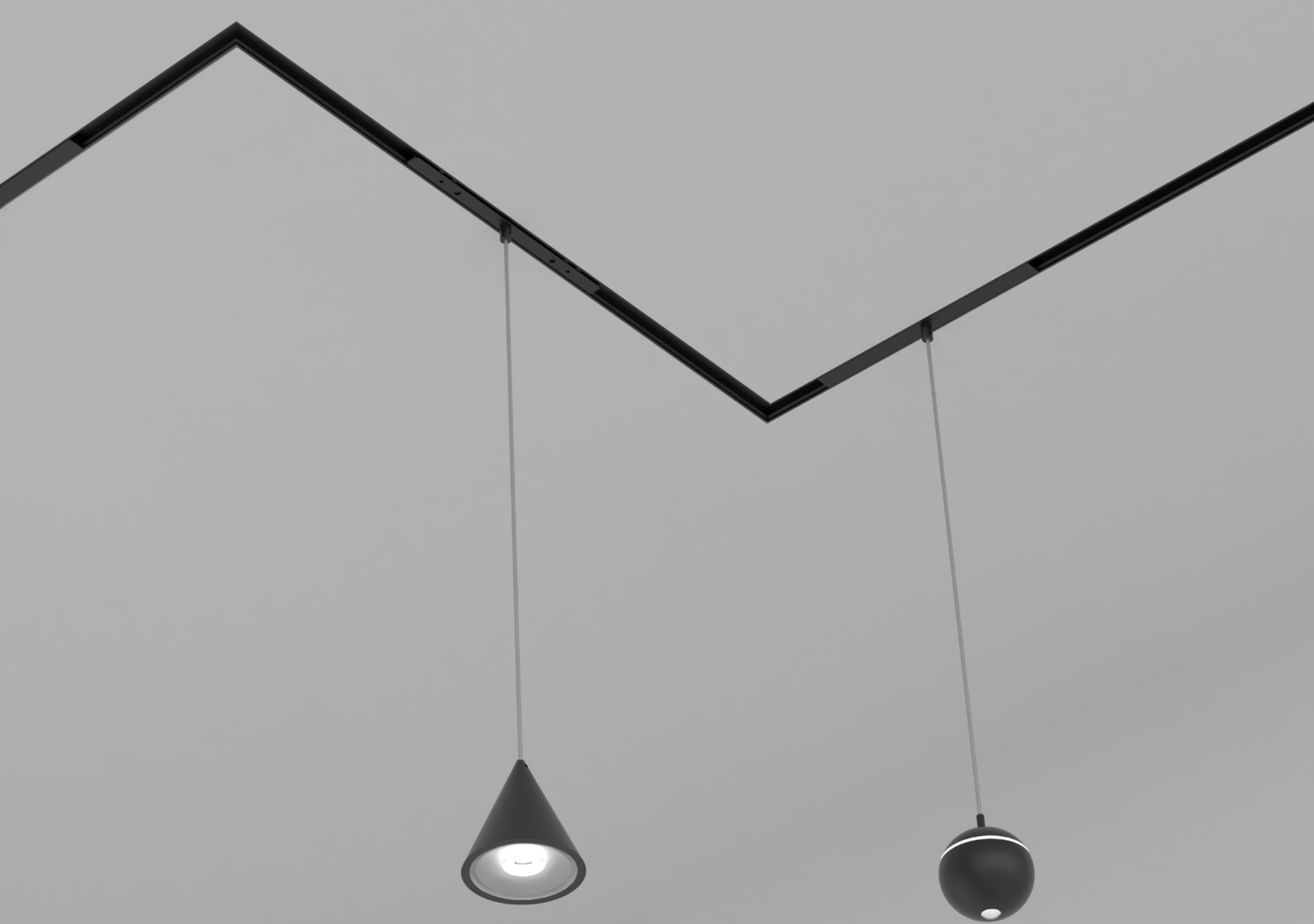


QUE17

8W | 16W
640LM | 1280LM
BLACK | WHITE

ADDITIONAL INFO

- Input Voltage: 24V
- CCT: 27K, 30K, 35K, 40K
- Beam Angle: 24° / 45°



QUE15

8W
425LM
BLACK | WHITE

ADDITIONAL INFO

- Input Voltage: 24V
- CCT: 27K, 30K, 35K, 40K
- Beam Angle: 15° / 24° / 40°



QUE18

6W
352LM/W
BLACK | WHITE

ADDITIONAL INFO

- Input Voltage: 24V
- CCT: 27K, 30K, 35K, 40K
- Beam Angle: 24° / 40°





QUE19

5W
506LM/W
BLACK | WHITE

ADDITIONAL INFO

- Input Voltage: 24V
- CCT: 27K, 30K, 35K, 40K
- Beam Angle: 330°



QUE20

3W
220LM/W
BLACK | WHITE

ADDITIONAL INFO

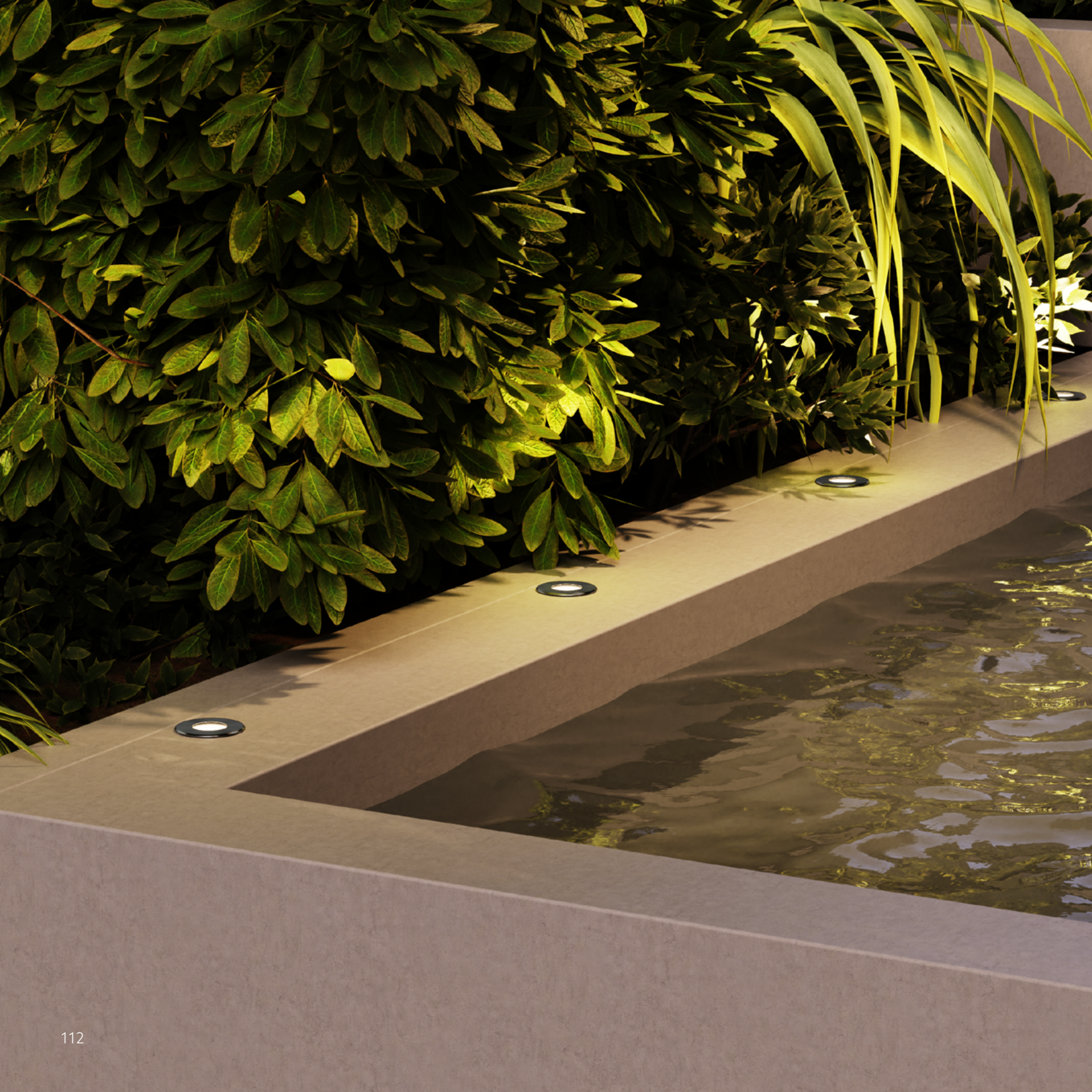
- Input Voltage: 24V
- CCT: 27K, 30K, 35K, 40K
- Beam Angle: 360°



110 FLORA LANDSCAPE

The Flora Landscape Series by Rayhil offers elegant lighting solutions that enhance gardens and pathways, creating a harmonious outdoor atmosphere.





F11 - IN GROUND

3W | 6W | 12W | 15W
83LM/W
2700K, 3000K, 4000K, 6000K
Stainless Steel

ADDITIONAL INFO

- IK Rating: IK09
- Input Voltage: DC 24V
- Beam Angle: 15° / 23° / 45° / 45° / 60°



F12 - ULTRA SLIM IN GROUND

6W | 9W | 12W | 15W
73LM/W
2700K, 3000K, 4000K, 6000K
Stainless Steel

ADDITIONAL INFO

- IK Rating: IK08
- Input Voltage: DC 24V
- Beam Angle: 10° / 20° / 30°



F13 - 360 DEGREE IN GROUND

4W
38LM/W
2700K, 3000K, 4000K, 6000K
Stainless Steel

ADDITIONAL INFO

- IK Rating: IK10
- Input Voltage: DC 24V
- Beam Angle: 360°

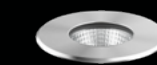


F14 - RING IN GROUND

2W
60LM/W
2700K, 3000K, 4000K, 6000K, RGB
Stainless Steel

ADDITIONAL INFO

- IK Rating: IK07
- Input Voltage: DC 24V
- Beam Angle: 120°

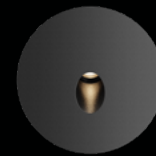
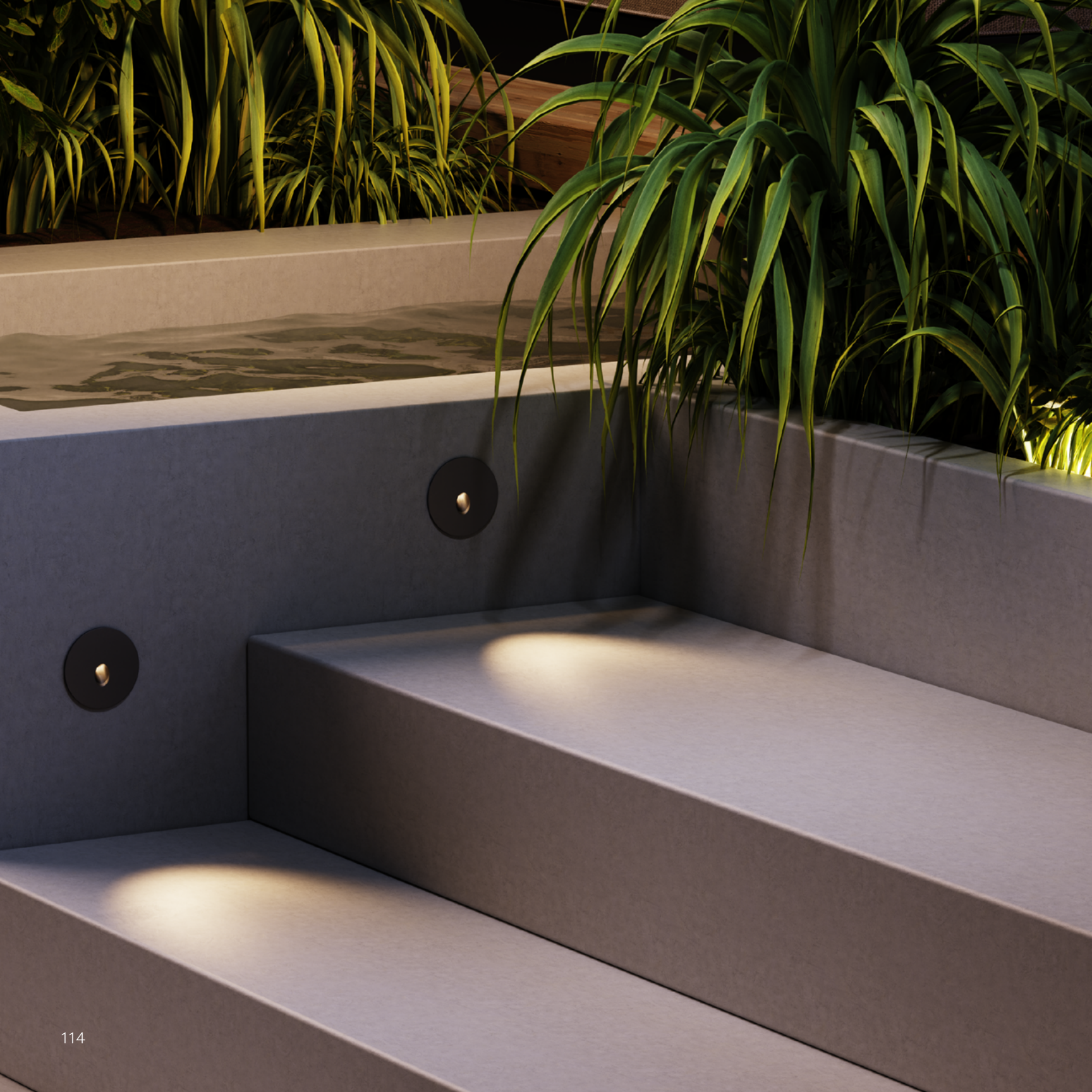


F15 - COB IN GROUND

9W
83LM/W
2700K, 3000K, 4000K, 6000K, RGB
Stainless Steel

ADDITIONAL INFO

- IK Rating: IK08
- Input Voltage: DC 24V
- Beam Angle: 10° / 15° / 28°



F21 - CIRCULAR IN WALL

3W
44LM/W
2700K, 3000K, 4000K
Black

ADDITIONAL INFO

- IK Rating: IK06
- Input Voltage: DC 24V
- Beam Angle: 30°

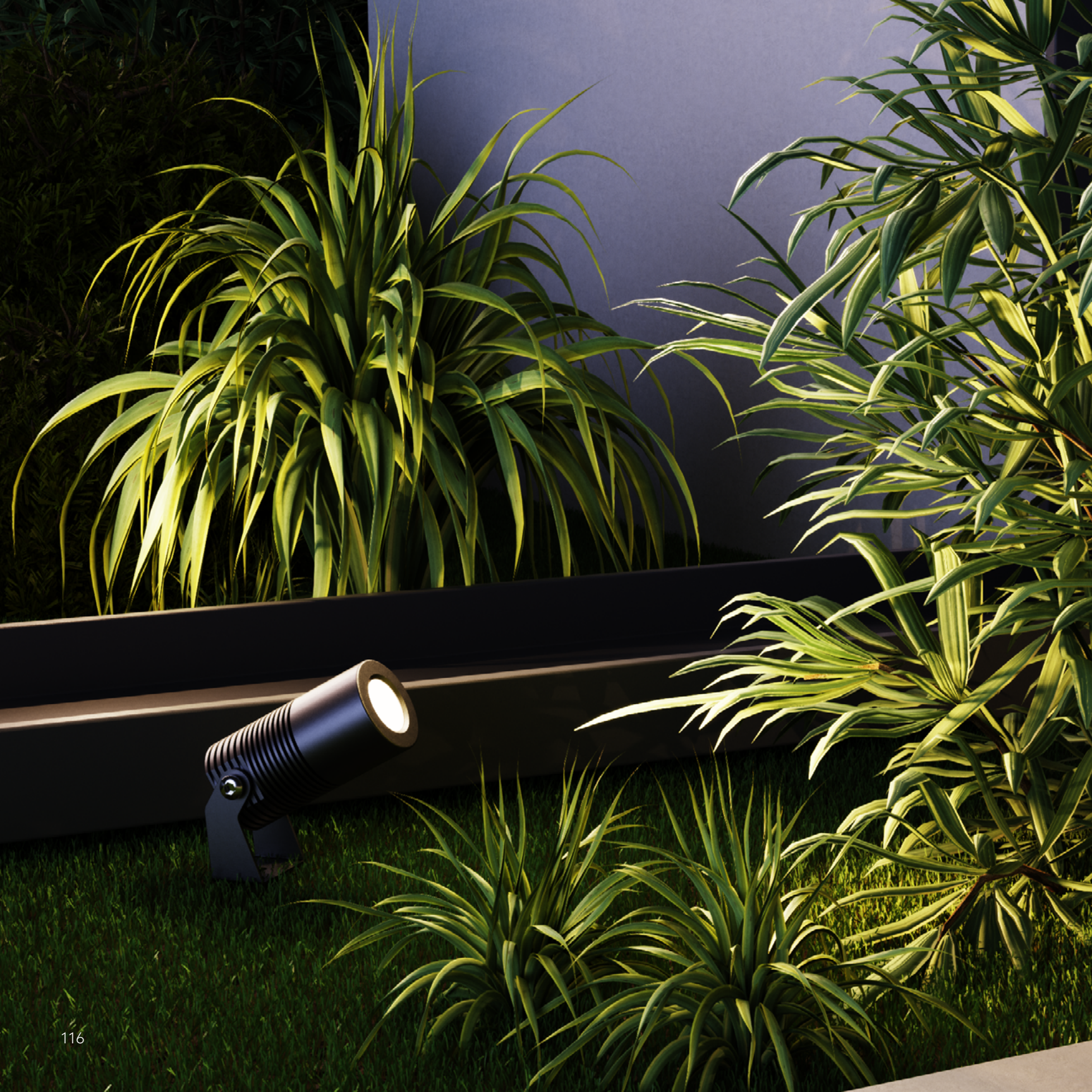


F22 - RECTANGLE IN WALL

3W
60LM/W
2700K, 3000K, 4000K, 6000K
Black

ADDITIONAL INFO

- IK Rating: IK06
- Input Voltage: AC100-245V
- Beam Angle: 45° x 120°



F31 - DIRECTIONAL LANDSCAPE

3W | 8W
80LM/W
2700K, 3000K, 4000K, 6000K
Gray

ADDITIONAL INFO

- IK Rating: IK04
- Input Voltage: DC 24V
- Beam Angle: 10° / 23° / 38°



Rayhil X Input Creative Studio

120 INDIGO WALL SCONCE

The Indigo Sconce is a dramatic statement piece that is both alluring and artful. Designed by Input Creative Studio using elements of Walnut and Chrome to create this minimalistic masterpiece.





IND

10W
2700K
350LM

DRIVER

Remote Driver - 24V
Integrate Driver - 120V

ADDITIONAL INFO

- Input Voltage: 24V / 120V
- Triac Dimming
- Integrated LED

MOUNTING

Bracket Mounted - 24V
Plaster + Bracket Mounted - 120V

FINISHES

Walnut Wood & Chrome

124 INSITE WALL LUMINARY

The Insite Series redefines the concept of illumination with its unique approach. This fixture is a testament to versatility, empowering the beholder to determine its application. Whether it's a minimalist wall fixture, an art picture light source, a distinctive address sign, or the cornerstone of an elaborate wall design, the Insite Series offers endless possibilities to enhance any space with its adaptable and innovative design.





INS

1FT | 12W | 420LM
2FT | 17W | 595LM
3FT | 22W | 770LM
4FT | 22W | 770LM

COLOR TEMPERATURE

2200K
2700K
3000K
3500K

ADDITIONAL INFO

- Input Voltage: 120-277V
- Dimming: Triac/0-10V
- Integrated LED

PLATE FINISHES

Black
White

TRIM FINISHES

Black
White
Wood

128 INFUSE CYLINDER

The Infuse Cylinder, crafted by Input Creative Studio, blends sleek aesthetics with flexible modular features, epitomizing a sophisticated and inventive approach to lighting design. This distinctive fixture exemplifies the studio's flair for creating adaptable, cutting-edge interior elements.





WALL CYLINDER



INFW-R
 ROUND
 6W | 9W | 12W Selectable
 80LM/W
 5" x 12.375" x 2.5"

ADDITIONAL INFO

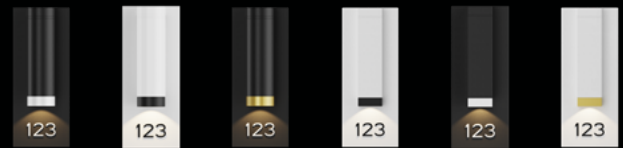
- Input Voltage: UNV 110-277
- CCT: 27K, 30K, 35K, 40K, 50K
- Dimming: Triac/0-10V
- Optional Signage



INFW-S
 SQUARE
 6W | 9W | 12W Selectable
 80LM/W
 5" x 12.375" x 2.125"

FINISHES

- Base: Black, White, Custom
- Trim: Black, White, Brass, Wood, Custom





SURFACE CYLINDER



INFS-R

ROUND
6W | 9W | 12W Selectable
80LM/W
4.5" x 8.625" x 2.5"

ADDITIONAL INFO

- Input Voltage: UNV 110-277
- CCT: 27K, 30K, 35K, 40K, 50K
- Dimming: Triac/0-10V



INFS-S

SQUARE
6W | 9W | 12W Selectable
80LM/W
4.5" x 8.625" x 2.125"

FINISHES

- Base: Black, White, Custom
- Trim: Black, White, Brass, Wood, Custom





PENDANT CYLINDER



INFP-R

ROUND

6W | 9W | 12W Selectable

80LM/W

4.5" x 22.5" x 2.5"

ADDITIONAL INFO

- Input Voltage: UNV 110-277
- CCT: 27K, 30K, 35K, 40K, 50K
- Dimming: Triac/0-10V



INFP-S

SQUARE

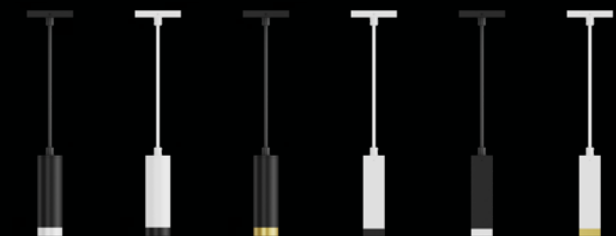
6W | 9W | 12W Selectable

80LM/W

4.5" x 22.5" x 2.125"

FINISHES

- Base: Black, White, Custom
- Trim: Black, White, Brass, Wood, Custom



136 INOVA CEILING FIXTURE

The Inova ceiling fixture by Input Creative Studio artfully blends modern design with traditional elegance, showcasing the studio's ability to innovate classic interior elements. This piece represents a harmonious fusion of artistic flair and functional ingenuity, marking a new era in contemporary lighting design.



rayhil
redefine brilliance



INV

9IN | 15W | 1200LM
12IN | 18W | 1440LM
16IN | 26W | 2080LM
20IN | 32W | 2650LM

COLOR TEMPERATURE

2200K
2700K
3000K
3500K
4000K
5CCT Selectable

ADDITIONAL INFO

- Input Voltage: 120-277V
- Dimming: Triac/0-10V

MOUNTING

Surface
Stem

LENS

Frosted
Anti-Glare

BASE FINISHES

Black
White
Custom

RIM FINISHES

Black
White
Brass
Wood
Custom

FINISHES



