

The image features a dark background with several vertical light bars of varying heights and thicknesses, creating a modern, architectural feel. The light bars are arranged symmetrically on both sides of the central text. The central text 'rayhil' is in a lowercase, sans-serif font. The letter 'i' is replaced by a stylized circular graphic that has a bright, star-like glow at its top right, suggesting a light source or a reflection. The overall aesthetic is clean, minimalist, and high-tech.

rayhil

redefine brilliance

Spring 2024



ABOUT US

At Rayhil, we are endlessly devoted to finding innovative ways to light up the world. Since 2018, our team has found countless techniques to blend technology and design in order to create functional and energy-efficient lighting solutions. Above all else, our products are designed with quality in mind because illumination should feel effortless-like flipping on a switch. Our engineers are focused on simplifying technology to provide lighting solutions that last longer and perform better across every metric from longevity to energy-efficiency. Rising energy costs and a desire to live more sustainably

are shaping the lighting industry, for the better. Energy efficient performance is where Rayhil's design team shines, producing low energy consumption solutions. The Rayhil brand provides what customers need today by focusing on what is needed for tomorrow. We invest in research and development to position our brand as a leader in the residential and commercial lighting markets, adapting to changes driven by government regulations, energy markets, and consumer needs. From the Assembly Line to the Light Switch, Rayhil provides an unmatched experience by redefining what it means to illuminate



CONTENT

At Rayhil, we are endlessly devoted to Rayhil lighting solutions are designed with quality in mind because illumination should feel effortless - like flipping on a switch.

06 SONIC DOWNLIGHTS

24 PARKLINE OVERBED

28 REVOLVE CYCLINDER

32 STRIKE ARCHITECTURAL STRIP LIGHT

36 ROVE LINEAR

40 METRO LINEAR

44 LEXLINE LINEAR

48 RIB LUMINARY

52 ANCHOR WALL WASHER

60 QUE TRACK SYSTEM

80 INDIGO WALL SCONCE

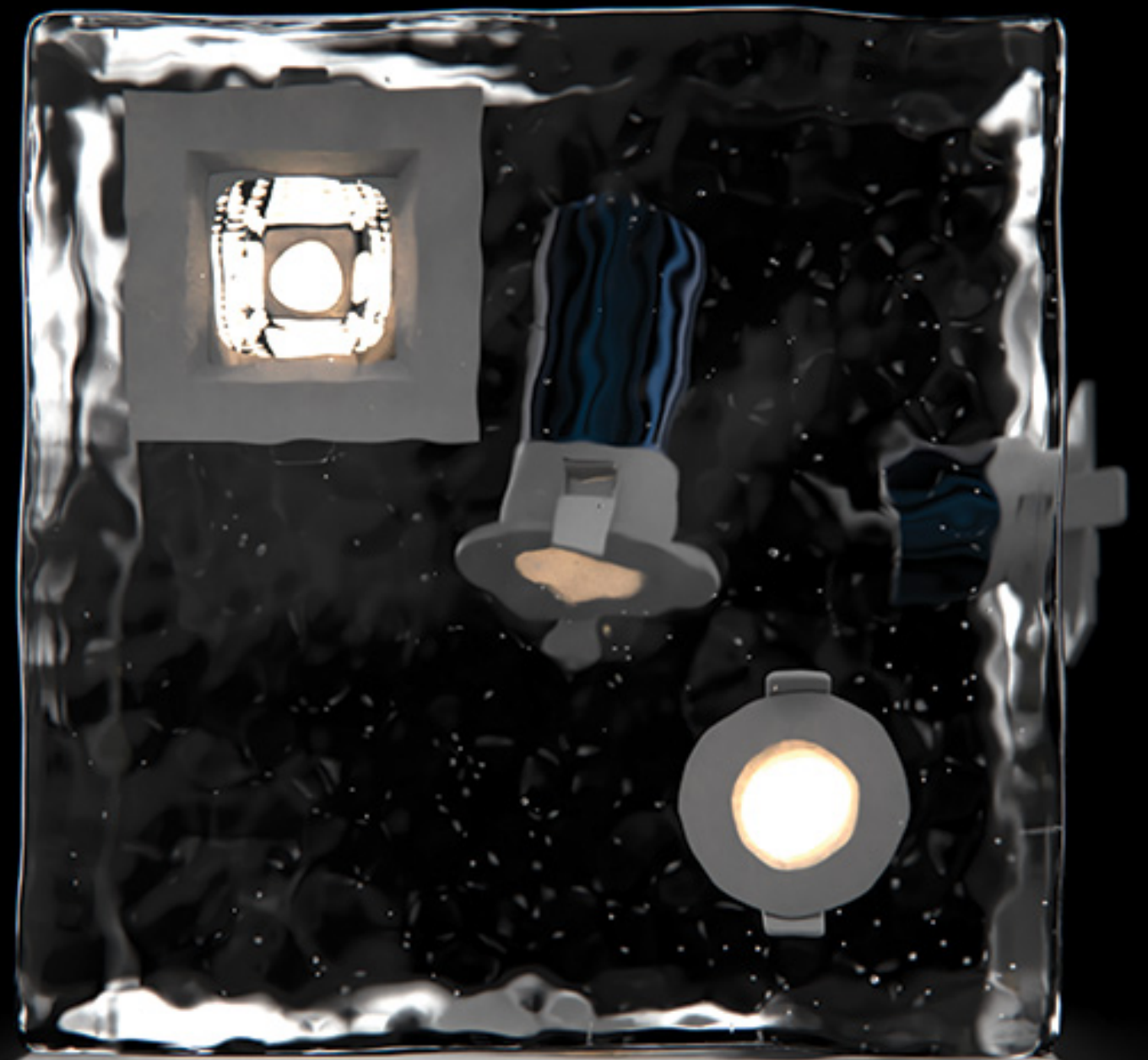
84 INSITE WALL LUMINARY

88 INFUSE CYLINDER

96 INVOA CEILING FIXTURE

06 SONIC DOWNLIGHT

The Rayhil Sonic Downlights boast an exceptional 90+ CRI light while simultaneously reaching substantial lumen counts on each model. The sleek design of the Downlights are just as practical as they are appealing. Air-tight and wet location approved, as well as Type IC rated – approved for direct contact with insulation. They are also equipped with an Isolated driver inside a junction box. Available in multiple color temperatures, trim colors and shapes, as well as sizes.



15 Degree
2700K

25 Degree
3000K

36 Degree
3500K

50 Degree
4000K

Beam Angle

Immerse your space in the perfect light with our versatile downlights featuring a range of beam angles. Tailor the illumination to your specific needs with options including narrow, medium, and wide beam angles. Whether you desire focused accent lighting to highlight artwork or a broad wash of light to brighten up a room, our downlights offer exceptional flexibility. Transform your environment with precision and control, ensuring every corner is bathed in the ideal distribution of light. Discover the power to shape your space with our downlights' customizable beam angles.

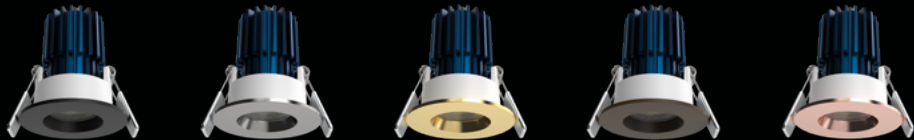


SONIC

1.5 RECESSED DOWNLIGHT



Trim Color: White, Black, Brushed Nickel, Gold, Bronze. Copper



RAD15R - ROUND

7W
600LM
3000K, 3500K, 4000K
Cut out 2" | Height 2.93"
IC Rated



RAD15S - SQUARE

7W
600LM
3000K, 3500K, 4000K
Cut out 2" | Height 2.93"
IC Rated

ADDITIONAL INFO

- Input Voltage: 120V or 277V
- Beam Angle: 36°

ACCESSORIES

- New construction plate available (NCH150)
- Optional Emergency Backup RAD15-EM

SONIC

2.5 RECESSED DOWNLIGHT



ACCESSORIES

- New Construction Plate available (NCH250)
- Optional Emergency Backup RAD25/35-EM

Trim Color: White, Black, Brushed Nickel, Gold, Bronze. Copper
*NOT AVAILABLE FOR TRIMLESS OPTION



RAD25R - ROUND

9W | 14W
800LM | 1100LM
2700K, 3000K, 3500K, 4000K, 5000K Selectable
Cut out 2.36" | Height 3.15"
IC Rated



RAD25S - SQUARE

9W | 14W
800LM | 1100LM
2700K, 3000K, 3500K, 4000K, 5000K Selectable
Cut out 2.36" | Height 3.15"
IC Rated



RAD25TMS - ROUND

Trimless
9W | 14W
800LM | 1100LM
2700K, 3000K, 3500K, 4000K, 5000K Selectable
Cut out 3.94" | Height 2.81"
IC Rated



RAD25TMS - SQUARE

Trimless
9W | 14W
800LM | 1100LM
2700K, 3000K, 3500K, 4000K, 5000K Selectable
Cut out 3.94" | Height 2.81"
IC Rated

ADDITIONAL INFO

- Input Voltage: 120V or 277V
- Beam Angle: 15° / 24° / 38°

SONIC

3.5 RECESSED DOWNLIGHT



ACCESSORIES

- New construction plate available (NCH350)
- Optional Emergency Backup RAD25/35-EM

Trim Color: White, Black, Brushed Nickel, Gold, Bronze. Copper

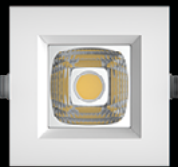


RAD35R - ROUND

15W
1250LM
2700K, 3000K, 3500K, 4000K, 5000K Selectable
Cut out 3.5" | Height 3.75"
IC Rated

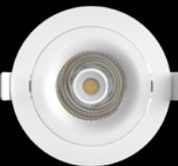
ADDITIONAL INFO

- Input Voltage: 120V or 277V
- Beam Angle: 24° / 36° / 50°



RAD35S - SQUARE

15W
1250LM
2700K, 3000K, 3500K, 4000K, 5000K Selectable
Cut out 3.5" | Height 3.75"
IC Rated



RAD35G - GIMBAL

12W
850LM
3000K, 3500K, 4000K
Cut out 3.5" | Height 3"
IC Rated

ADDITIONAL INFO

- Input Voltage: 120V or 277V
- Trim Color: Black / White
- Beam Angle: 15° / 24° / 42° / 55°



RAD35TMS - TRIMLESS

15W
1250LM
2700K, 3000K, 3500K, 4000K, 5000K Selectable
Cut out 3.74" | Height 3.39"
IC Rated

ADDITIONAL INFO

- Input Voltage: 120V or 277V
- Beam Angle: 15° / 24° / 38°

SONIC X

RECESSED DOWNLIGHT

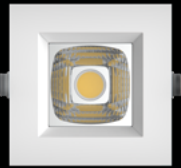


Our most powerful Downlight yet, the Sonic X 3.5, offers 2000lm of light with only 23W of energy consumption. This powerhouse exceeds all expectations with its illumination ability without compromising its sleek and compact size. As with all Sonic Downlight Series products, this model features an aluminum body, an anodized heat sink, and a galvanized steel trim. This solid design ensures the Sonic X 3.5 can offer premium lighting and durability in various settings, including wet locations or unusual ceiling heights. Furthermore, this fixture is available in two shapes, square and round, as well as numerous trim colors to meet your interior design needs.

Trim Color: White, Black, Brushed Nickel, Gold, Bronze, Copper



SONIC X - ROUND
23W
2000LM
2700K, 3000K, 3500K, 4000K, 5000K Selectable
Cut out 3.5" | Height 4.72"
IC Rated



SONIC X - SQUARE
23W
2000LM
2700K, 3000K, 3500K, 4000K, 5000K Selectable
Cut out 3.5" | Height 4.72"
IC Rated

ADDITIONAL INFO
• Input Voltage: 110V or 277V
• Beam Angle: 24° / 36° / 50°

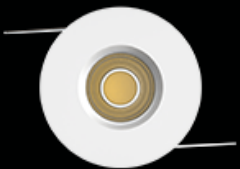
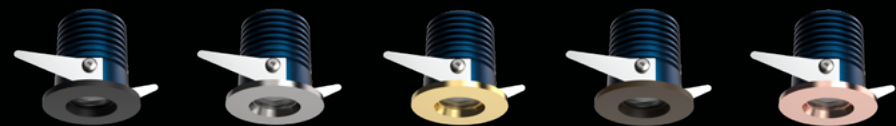
ACCESSORIES
- New construction plate available (NCH350)
- Optional Emergency Backup RAD25/35-EM

SONIC 1.0 MINI

The Sonic Mini 1.0 Downlights combine functionality, strength and appeal into a one inch compact fixture. Ideal for inside cabinets, display cases, and other decorative positions. Each Mini Downlight delivers 400 lumens and 90+ CRI light. An extruded aluminum heat sink ensures optimal heat dissipation and LED life. Multiple color temperatures and shape options available, and suitable for wet locations.



Trim Color: White, Black, Brushed Nickel, Gold, Bronze, Copper



RAD10R - ROUND
5W
400LM
3000K, 3500K, 4000K
Cut out 1.33" | Height 1.72"
IC Rated

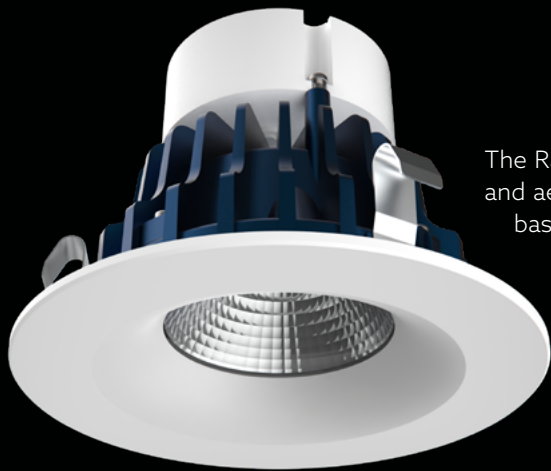


RAD10S - SQUARE
5W
400LM
3000K, 3500K, 4000K
Cut out 1.33" | Height 1.72"
IC Rated

- ADDITIONAL INFO**
- Input Voltage: 24V
 - Beam Angle: 60°
 - Non Dimmable

ACCESSORIES
- Drivers: LB55504, LB55450, LB55451, LB55452

SONIC RETROFIT DOWNLIGHT

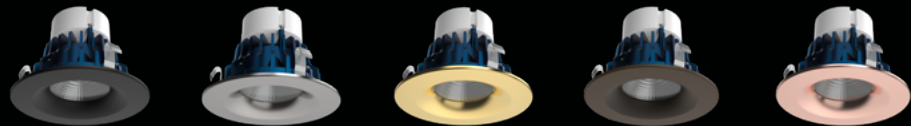


The Rayhil Sonic Retrofits were crafted with innovative efficiency and aesthetic perfectionism. The versatility of the E26 and MR16 base options, plus the multiple color temperatures, trim colors and shapes, as well as sizes, make the Retrofit Series achieve your lighting desires with ease. Each Retrofit displays exceptional 90+ CRI light while delivering over 75 lumens per watt. Compatible with both 4" New construction and 4" Remodel Housings. In addition, the Retrofits are suitable for wet location.

ACCESSORIES

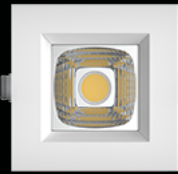
- Drivers: LB55504, LB55450, LB55451, LB55452

Trim Color: White, Black, Brushed Nickel, Gold, Bronze, Copper



RAD40R - ROUND

10W
1000LM
3000K, 3500K, 4000K Selectable
Trim | Height 3.375"
IC Rated



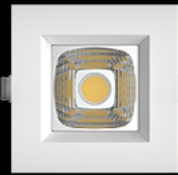
RAD40S - SQUARE

10W
1000LM
3000K, 3500K, 4000K Selectable
Trim | Height 3.375"
IC Rated



RAD40R - ROUND

MR16
10W
1000LM
3000K, 3500K, 4000K Selectable
Trim | Height 3.375"
IC Rated



RAD40R - SQUARE

MR16
10W
1000LM
3000K, 3500K, 4000K Selectable
Trim | Height 3.375"
IC Rated

ADDITIONAL INFO

- Input Voltage: 120V or 12V
- Beam Angle: 24° / 36° / 50°

SONIC MULTIPLE

The Rayhil Sonic Multiple Series cultivates a fresh unique look that defines any commercial or residential space. The flawless engineering of the extruded aluminum heat sink ensures optimal heat dissipation and LED life. The Multiple Head Downlights are Type IC rated – approved for direct contact with insulation and have an isolated driver inside a junction box. Additionally, they are air-tight and wet location approved. The gimbal can rotate 360 degrees horizontally and tilt 30 degrees. Available in both 2-Head and 3-Head as well as multiple color temperature and trim options.



RAD2H - 2HEAD

12W x 2
1750LM
2700K, 3000K, 3500K, 4000K, 5000K Selectable
Cut out 7.5" x 3.75 | Height 4"
IC Rated



RAD3H - 3HEAD

12W x 3
1750LM
2700K, 3000K, 3500K, 4000K, 5000K Selectable
Cut out 10.875" x 3.75 | Height 4"
IC Rated

ADDITIONAL INFO

- Input Voltage: 120V or 277V
- Beam Angle: 15° / 24° / 38°

ACCESSORIES

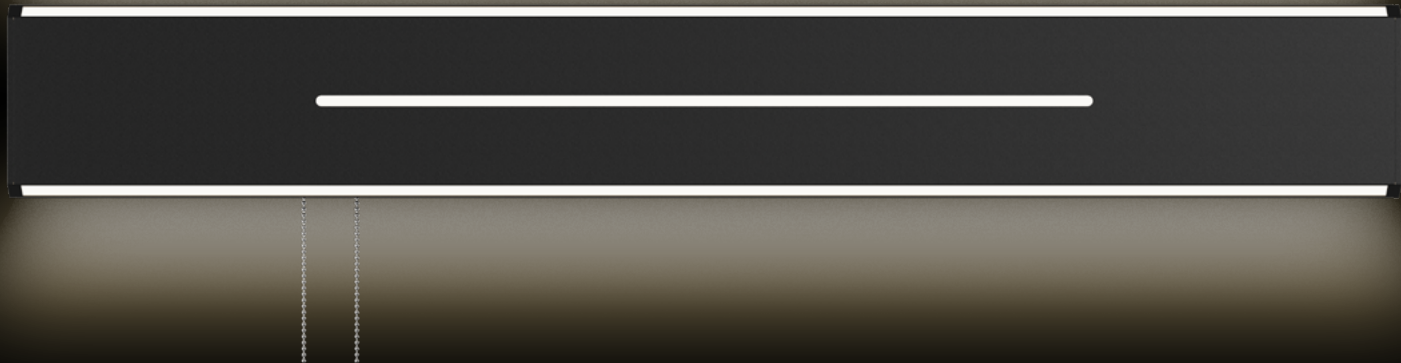
- Trim Color: White, Black
- New construction plate available (NCH2H)

24 PARKLINE OVERBED

The Parkline Overbed Light was meticulously designed with the intention of providing the Hospitality Industry with a solution that would exceed any expectation. An equal combination of aesthetic and maximum performance harmoniously powers the Parkline. The 3 directional lights provide multiple options for illumination such as a Reading Light, Ambient Light and a Night Light which can function individually as well as in unison. Standard finish options include White, Brushed Nickel, Gold and Black. Custom finishes and lengths are available to meet the exact vision imagined. Field selectable Wattage and Color Temperature switches located behind the fixture grant the flexibility to add yet another customized feel to any room they are placed in.



PARKLINE™



POL-2-CCT

2 FT
10W / 15W / 20W + 5W
30K / 35K / 40K 3CCT Selectable

POL-3-CCT

3 FT
10W / 20W / 30W + 5W
30K / 35K / 40K 3CCT Selectable

POL-4-CCT

4 FT
20W / 30W / 40W + 5W
30K / 35K / 40K 3CCT Selectable

FINISHES

White
Black
Gold
Brushed Nickel
Custom

STARTING OPTION

Pull Chain
1 FT | 2 FT | 3 FT | Custom
Left | Center | Right
Wire | Wireless

Black



White



Brushed Nickel



Gold



Pine



Maple



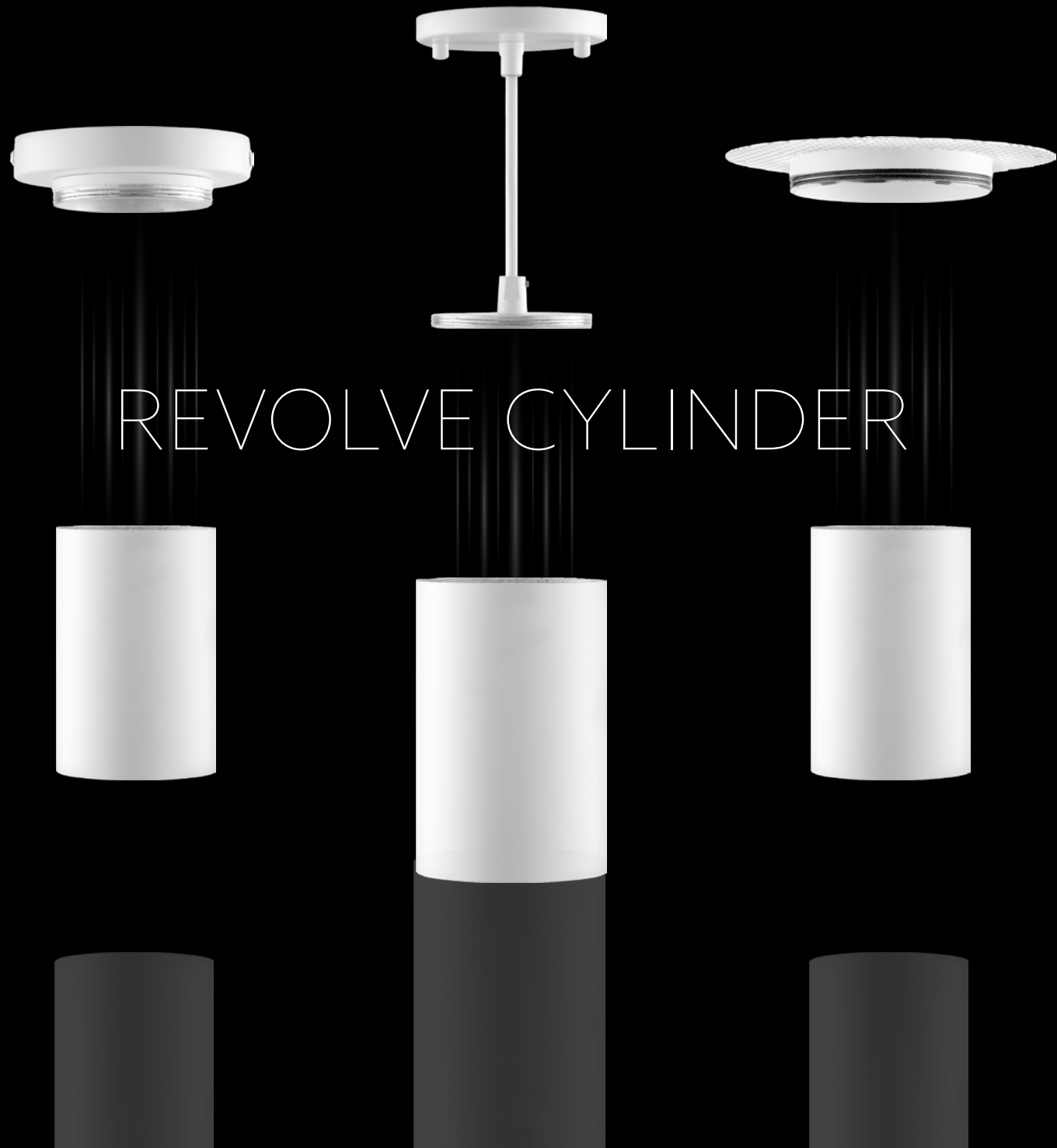
Walnut



28 REVOLVE CYLINDER

The Revolve Cylinder Series provides a minimalistic lighting element to your space. The Black and White finish options allow you to match your fixture to your aesthetic. The interchangeable Mounting Kits ensure smooth installation and a versatile adaptation





REVOLVE CYLINDER



CYL - CYLINDER MODULE

20W
1800LM
2700K, 3000K, 3500K, 4000K, 5000K Selectable
BLACK | WHITE



CYL-SFC

Surface Mounting Kit
2700K, 3000K, 3500K, 4000K, 5000K Selectable
Black | White
4.72" x 5.87"



CYL-SFC

Pendant Mounting Kit
2700K, 3000K, 3500K, 4000K, 5000K Selectable
Black | White
4.72" x 5.87"



CYL-TMS

Trimless Mounting Kit
2700K, 3000K, 3500K, 4000K, 5000K Selectable
Black | White
5.20" x 5.24"

ADDITIONAL INFO

- Input Voltage: 120V or 277V
- Dimming: 0-10V & Triac Dimming

EM BATTERY BACKUP OPTION



32 STRIKE ARCHITECTURAL STRIP LIGHT

The Strike series grants creative opportunities that are seldom seen in the Lighting industry. Each space can be uniquely transformed by these LED Linear Strips. Unlimited shapes and formations can be designed to ensure a timeless intrigue. The COB Strip technology creates a seamless and transitional light output, without any interruptions such as with standard LED Chips. Black and White finishes available.





STRIKE

Inspire endless curiosity in your space

STK

4.6W/FT
412LM/FT
Custom Length available up to 40FT

Color Temperature

2700K
3000K
3500K
4000K
5000K

FINISHES

Black
White (Custom order)

ADDITIONAL INFO

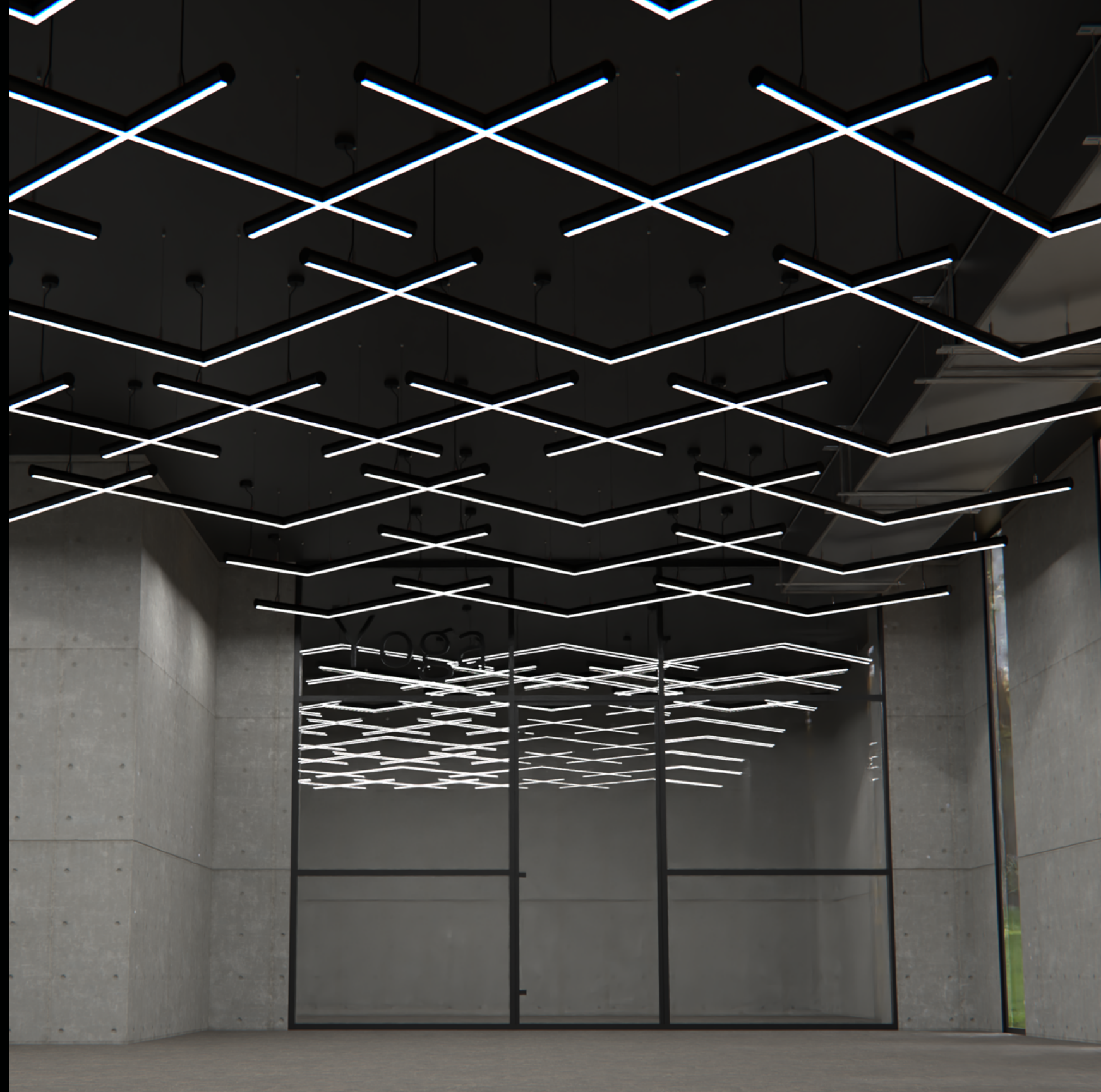
- Runs can not exceed 20 feet per home run
- Maximum driver distance of 20 feet before voltage drop (with 18 gage wire)
- Compatible with electronic driver only

ACCESSORIES

- Drivers:
STK-96-DIM
STK-120-DIM
STK-200-DIM
STK-300-DIM

36 ROVE LINEAR

The Rove Linear is a versatile lighting fixture that seamlessly blends form and function, making it the perfect addition to any space. Its sleek and minimalistic design allows it to complement any existing architectural elements, while also adding a touch of sophistication to the room.





ROVE

LINKABLE LINEAR

RVE-2

2 FT
25W | 2375LM
30K / 35K / 40K
24" x 1.65" x 1.62"

RVE-3

3 FT
30W | 2850LM
30K / 35K / 40K
36" x 1.65" x 1.62"

RVE-4

4 FT
34W | 3230LM
30K / 35K / 40K
48" x 1.65" x 1.62"

RVE-5

5 FT
40W | 3800LM
30K / 35K / 40K
60" x 1.65" x 1.62"

RVE-6

6 FT
60W | 5700LM
30K / 35K / 40K
72" x 1.65" x 1.62"

FINISHES

Black
White
Brushed Nickel
Custom

ACCESSORY TYPE

X
T
L

DRIVER

Non-Dimmable
0-10V

LIGHT DIRECTION

Direct
Direct/Indirect

ADDITIONAL INFO

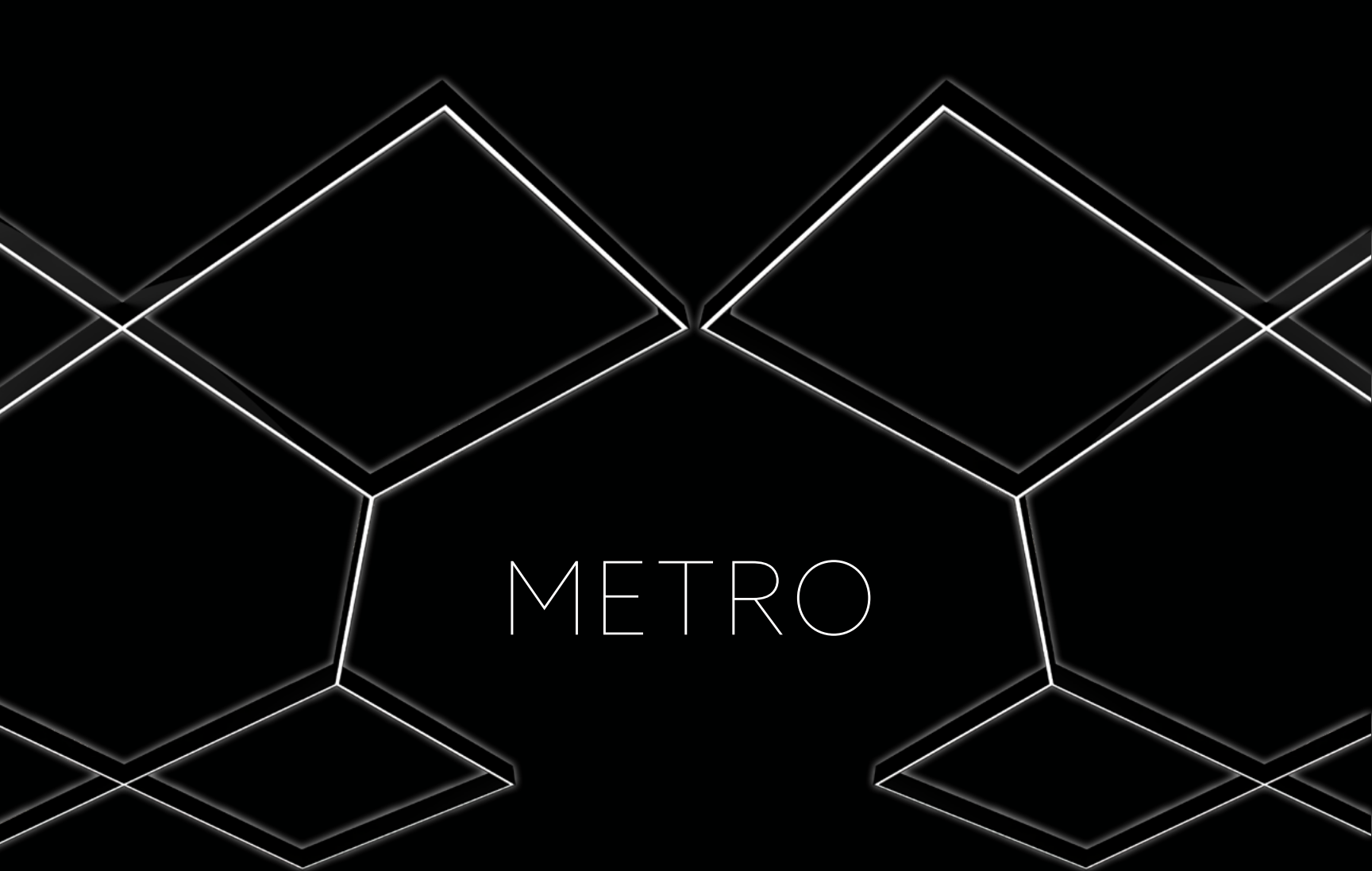
- 100-277V
- Max run 400W
- Adjustable Suspension up to 5ft
- Internal Driver



40 METRO LINKABLE LINEAR

The Metro Linear is a versatile lighting fixture that seamlessly blends form and function, making it the perfect addition to any space. Its sleek and minimalistic design allows it to complement any existing architectural elements, while also adding a touch of sophistication to the room.





METRO

LIGHT DIRECTION

Direct
Direct/Indirect

DRIVERS

100-277V (Non-Dimmable)
0-10V

ACCESSORIES

L
T
V
X
Y

MTO-2

2FT
25W | 2125 LM
30K, 35K, 40K
24" x 0.78" x 3.70

MTO-3

3FT
30W | 2550LM
30K, 35K, 40K
36" x 0.78" x 3.70

MTO-4

4FT
34W | 2890LM
30K, 35K, 40K
48" x 0.78" x 3.70

MTO-5

5FT
40W | 3400LM
30K, 35K, 40K
60" x 0.78" x 3.70

MTO-6

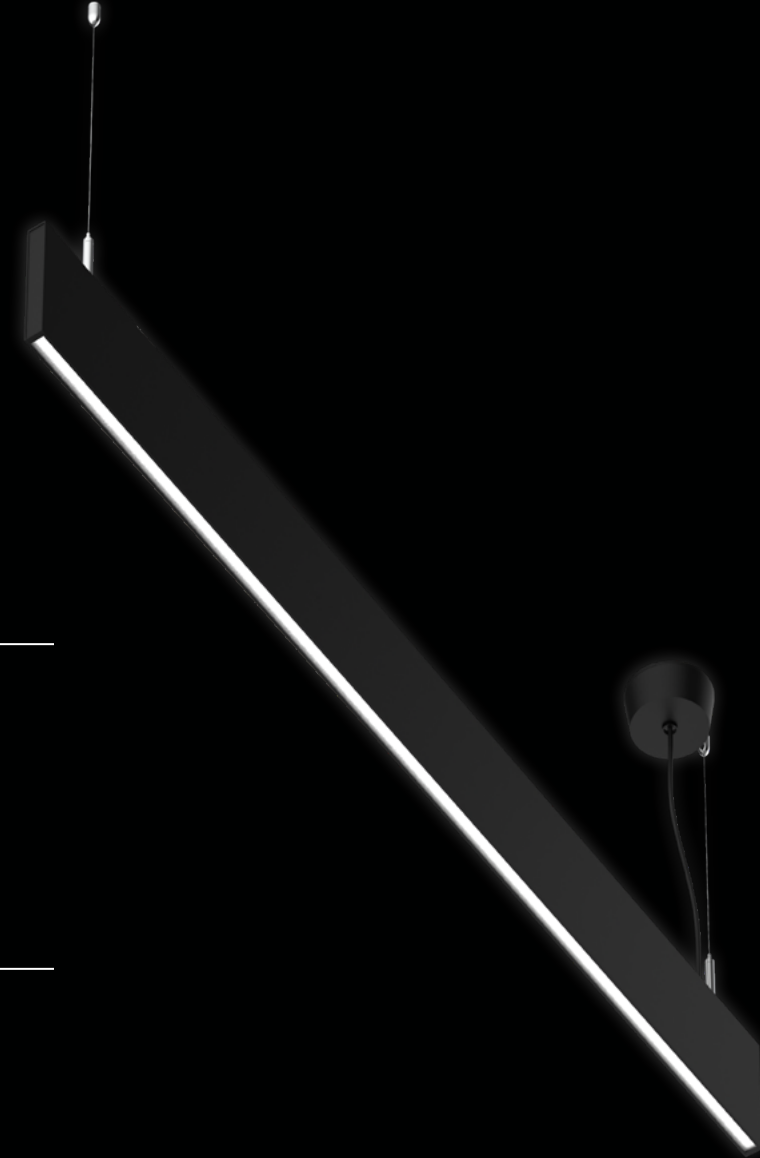
6FT
60W | 5100LM
30K, 35K, 40K
72" x 0.78" x 3.70

FINISHES

Black
White
Brushed Nickel
Custom

ADDITIONAL INFO

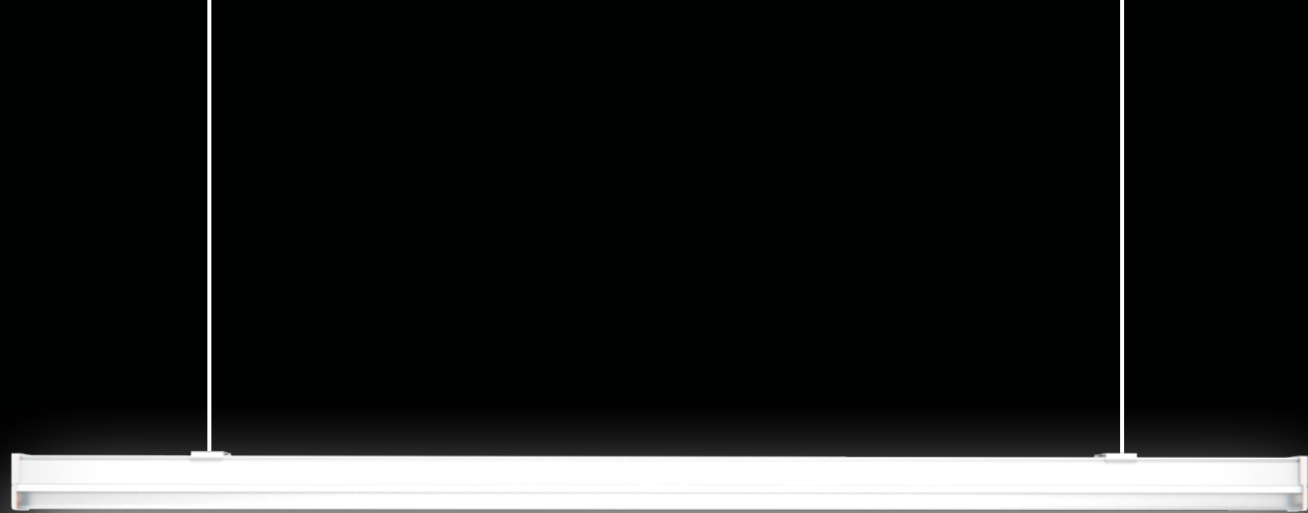
- 400W
- Adjustable Suspension up to 5ft



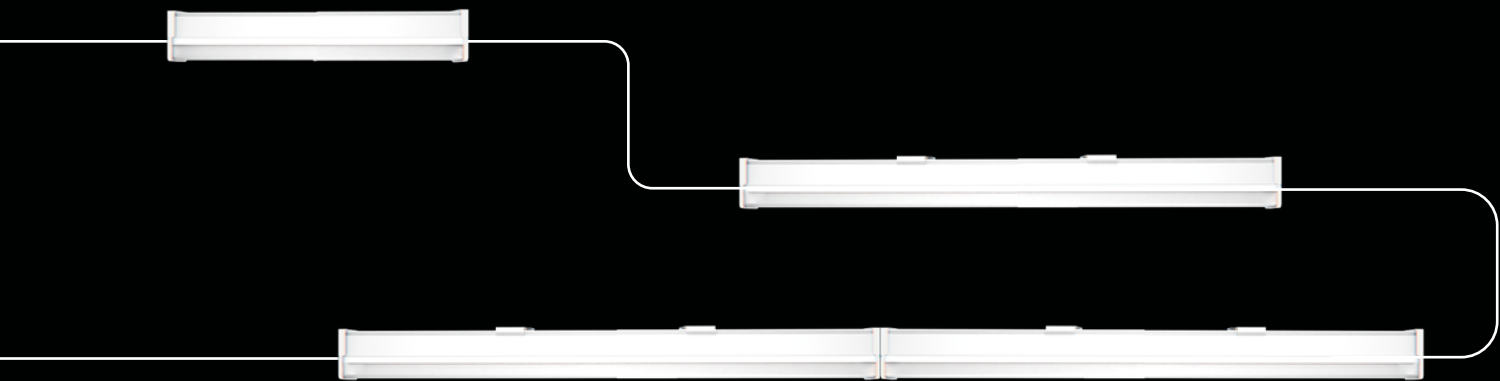
44 LEXLINE LINEAR

The minimalistic silhouette of the Lexline showcases the modern design that elevates the new generation of lighting. The sleek aluminum body is available in White, Brushed Nickel, and Black finishes so that you may choose whichever aesthetic fits your desire. Each Lexline can be linked to create a continuous line of seamless illumination. Options for Emergency battery Backup and Motion sensor configuration are available as well. The Lexline is ETL, CETL and Energy star approved, with a 5 year warranty.





LEXLINE



LEX

1FT | 10W | 1100LM
2FT | 20W | 2000LM
3FT | 30W | 2900LM
4FT | 40W | 4400LM
6FT | 60W | 5900LM
8 FT | 80W | 8000LM

COLOR TEMPERATURE

3000K
4000K
5000K
CCT Adj.

CONFIGURATION

Emergency Battery
Motion Sensor
EM+MS

FINISHES

White | Black | Brush Nickel

DRIVER

Non-Dimmable
0-10

APPLICATION

Surface
Suspended

ACCESSORIES

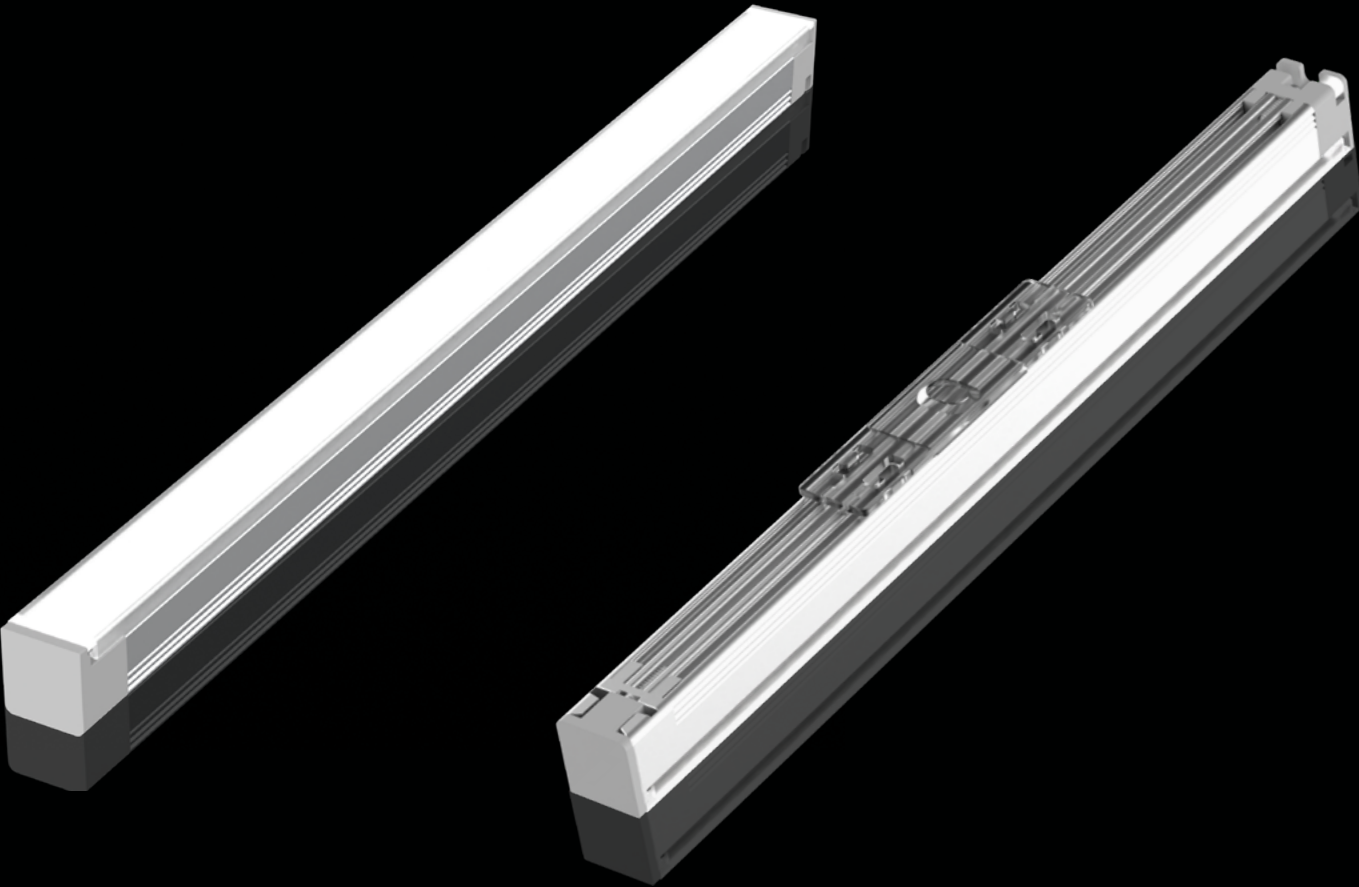
4 FT Suspension Wire
Bridge Connector
Power Cable
Couplings Connectors

48 RIB LUMINARY

The Rib Luminary is a groundbreaking lighting solution that offers a distinct and minimalist alternative to traditional strip lighting. With its seamless linking capability, the Rib Luminary provides a sleek and continuous lighting effect that is both visually appealing and highly functional. Whether you prefer an AC or DC model, this innovative luminary is designed to cater to your specific needs and requirements. Its simplicity in design and installation makes it an ideal choice for various applications



RIBDC



RIBDC

- 4IN | 1.3W | 91LM
- 8IN | 2.7W | 189LM
- 12IN | 4W | 280LM
- 23IN | 8W | 560LM
- 35IN | 12W | 840LM
- 47IN | 16W | 1120LM
- 59IN | 20W | 1400LM

COLOR TEMPERATURE

- 2700K
- 3000K
- 3500K
- 4000K
- 5000K

FINISHES

- White
- Black
- Aluminum
- Gold

ACCESSORIES

- Right L
- Left L
- X
- Inner L
- Outer L
- T

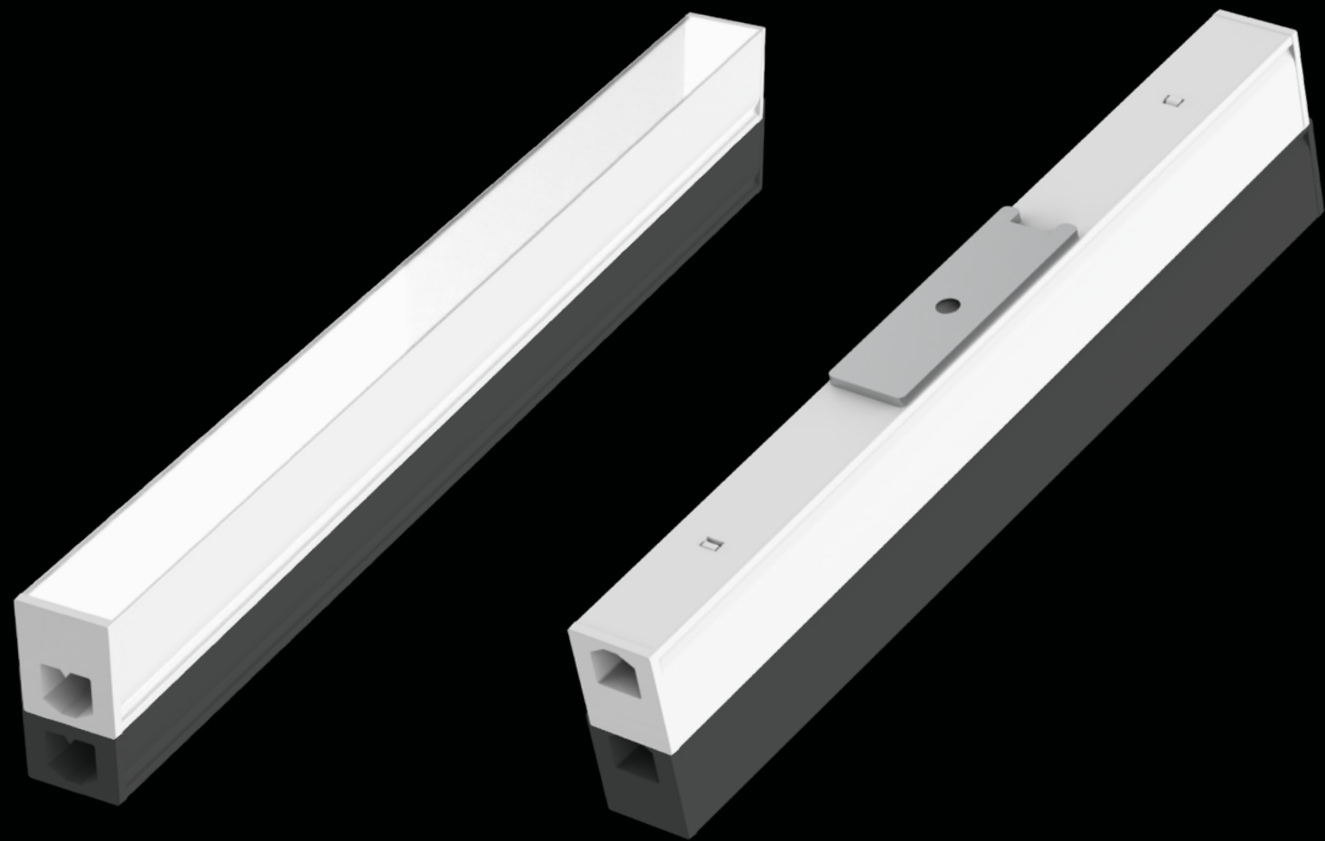
ADDITIONAL INFO

- Input Voltage: 24V
- Up to 16.4ft run
- Surface or Recessed mount
- Seamlessly linkable

WIRE ACCESSORIES

- Starter
- Coupling
- Splitter
- DC Jack Starter
- Motion Sensor
- In-line Dimmer

RIBAC



RIBAC

4IN | 1W | 70LM
6IN | 1.5W | 110LM
8IN | 2W | 140LM
12IN | 3W | 210LM
24IN | 6W | 420LM
48IN | 12W | 840LM

ADDITIONAL INFO

- Input Voltage: 120V
- Up to 36.4ft run
- Seamlessly linkable
- Multiple mounting options

COLOR TEMPERATURE

2700K
3000K
3500K
4000K
5000K

FINISHES

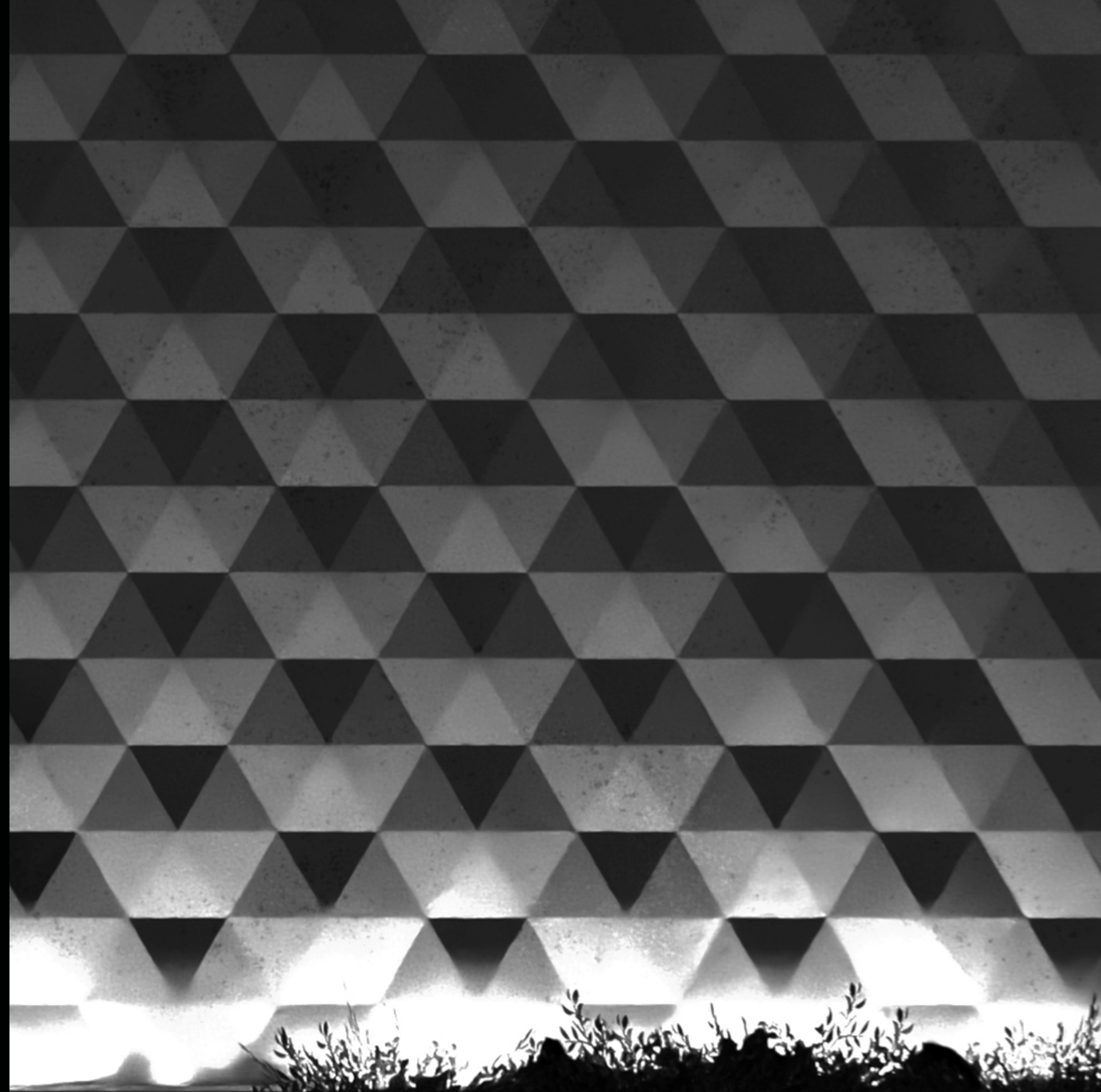
White
Black
Aluminum
Gold

WIRE ACCESSORIES

- Junction Box
- Wire Starter
- Power Plug Starter
- Coupling Connector
- Coupling Wire Connector

52 ANCHOR WALL WASHER

The Anchor Wall Wash Linear is versatile outdoor lighting fixture that combines efficiency and aesthetics, illuminating outdoor space with precision while enhancing architectural features and creating captivating wall wash effects. Its durable construction and weather resistance make it suitable for range of applications, from building facades and landscape to walkways and plazas, providing a versatile light solution for transforming outdoor environment into visually stunning space.





ARK

1FT | 2FT | 3FT | 4FT
9W/FT
100LM/W

OPTICS

13 Degree
25 Degree
35 Degree
50 Degree
15 x 40 Wall Wash

COLOR TEMPERATURE

2700K
3000K
3500K
4000K
5000K
6000K

ACCESSORIES



ARKRGBW

1FT | 2FT | 3FT | 4FT
15W/FT
50LM/W

OPTICS

13 Degree
25 Degree
35 Degree
50 Degree
20 x 50 Wall Wash

COLOR TEMPERATURE

RGB+3000K
RGB+4000K
RGB+6500K

CONTROLS

DMX
RDM

FINISHES

Gray
Black
White

DIMMING

ON/OFF
0-10V
DALI

ADDITIONAL INFO

- IP66 Wet Location Rated
- Powder Coated Body
- Universal Voltage

ANCHOR PLUS



ARKP

1FT | 2FT | 4FT
12W/FT
100LM/W

ADDITIONAL INFO

- IP66 Wet Location Rated
- Powder Coated Body
- Universal Voltage

COLOR TEMPERATURE

2700K
3000K
3500K
4000K
5000K
6000K

BEAM ANGLE

13 Degree
25 Degree
35 Degree
50 Degree
15 x 40 Wall Wash

DIMMING

ON/OFF
0-10V
DALI

FINISHES

Gray
Black
White

WIRE ACCESSORIES

Power Cable
Coupling
T Joint
End Cap

ACCESSORIES



ANCHOR COVE



ARKP

1FT | 2FT | 3FT | 4FT
8W/FT
200LM/W

COLOR TEMPERATURE

1800K
2700K
3000K
4000K
6500K

BEAM ANGLE

Flat 120°
Round 145°

CONTROL

DMX
RDM

FINISHES

Gray
Black
White

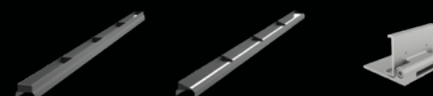
WIRE ACCESSORIES

Power Cable
Coupling
T Joint
End Cap

ADDITIONAL INFO

- IP66 Wet Location Rated
- Powder Coated Body
- Universal Voltage

ACCESSORIES

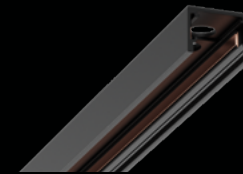


60 QUE TRACK SYSTEM

Experience the magnetic revolution in lighting with the Que Track Light System. Its ultra-slim profile seamlessly merges with any interior, while its versatile track applications and unlimited head options provide effortless customization. Highlight specific areas and set the perfect ambiance with precision. Illuminate your space like never before and embrace the future of lighting technology

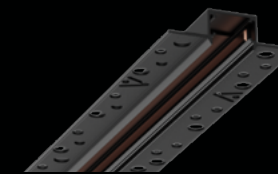


QUE TRACKS



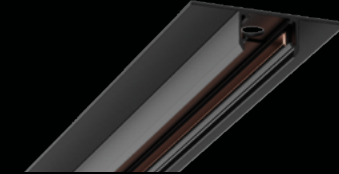
QUE-SF

SURFACE
6FT | 9FT
BLACK | WHITE | CUSTOM



QUE-TM

TRIMLESS-MUD-IN
6FT | 9FT
BLACK | WHITE | CUSTOM



QUE-TN

TRIMLESS NON-MUD-IN
6FT | 9FT
BLACK | WHITE | CUSTOM



QUE-P

PENDANT
6FT | 9FT
BLACK | WHITE | CUSTOM

ACCESSORIES TYPE

- Starting Wire
- L Shape
- Inner L Shape
- Hard L Connector
- Flexible L Connector
- Hard Connector



ADDITIONAL INFO

- 24V System
- Magnetic installation for light heads multiple lengths and application types unlimited finish options



QUE11

3W x 2 | 5W x 2 | 10W x 2
540LM | 900LM | 1800LM
BLACK | WHITE | GOLD

ADDITIONAL INFO

- Input Voltage: 24V
- CCT: 27K, 30K, 35K, 40K
- Beam Angle: 24° / 36°

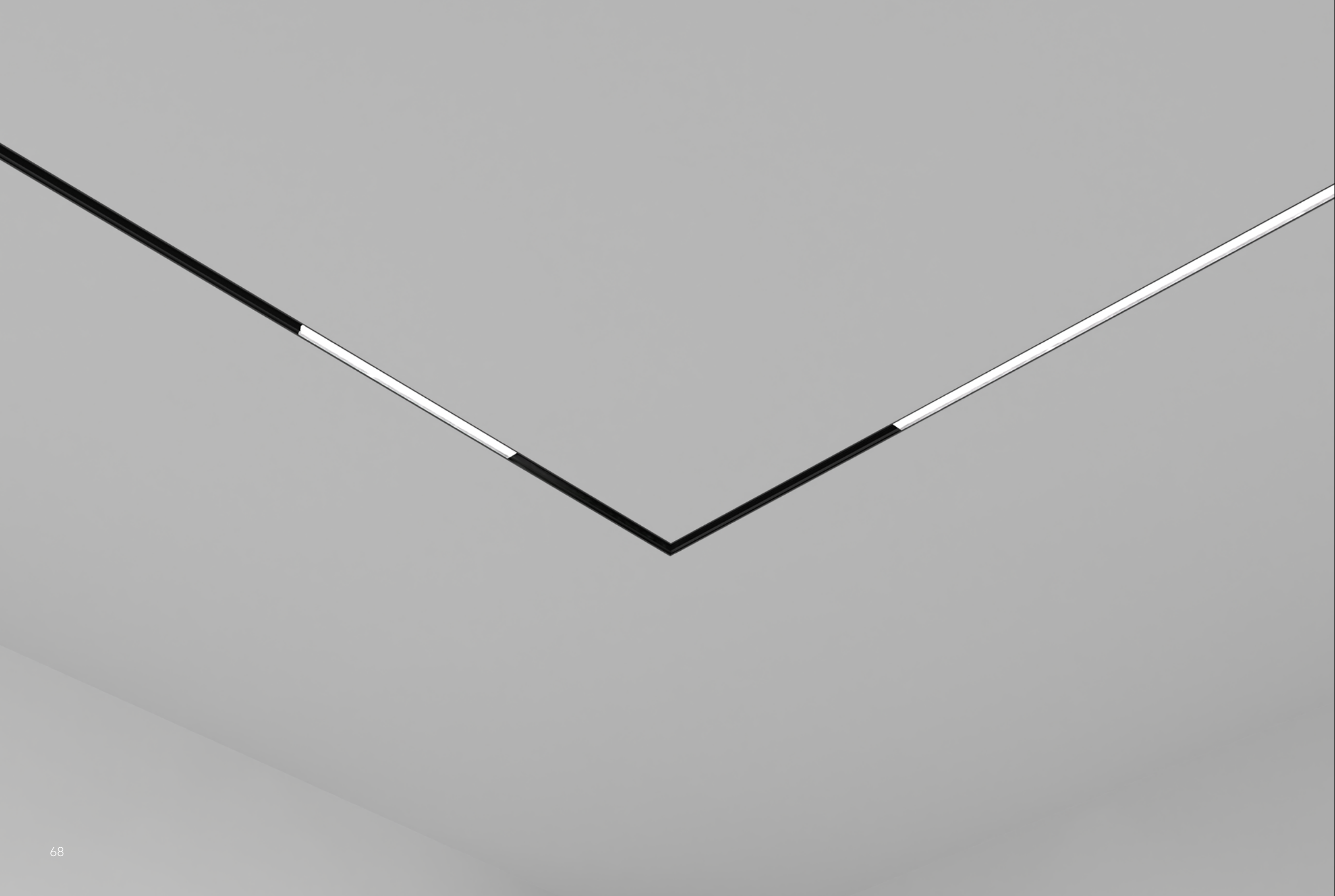


QUE14

3W | 5W | 7W | 10W
270LM | 450LM | 630LM | 900LM
BLACK | WHITE

ADDITIONAL INFO

- Input Voltage: 24V
- CCT: 27K, 30K, 35K, 40K
- Beam Angle: 24° / 36° / 45°



QUE12

6W | 12W
180LM | 360LM
BLACK | WHITE

ADDITIONAL INFO

- Input Voltage: 24V
- CCT: 27K, 30K, 35K, 40K
- Beam Angle: 110°

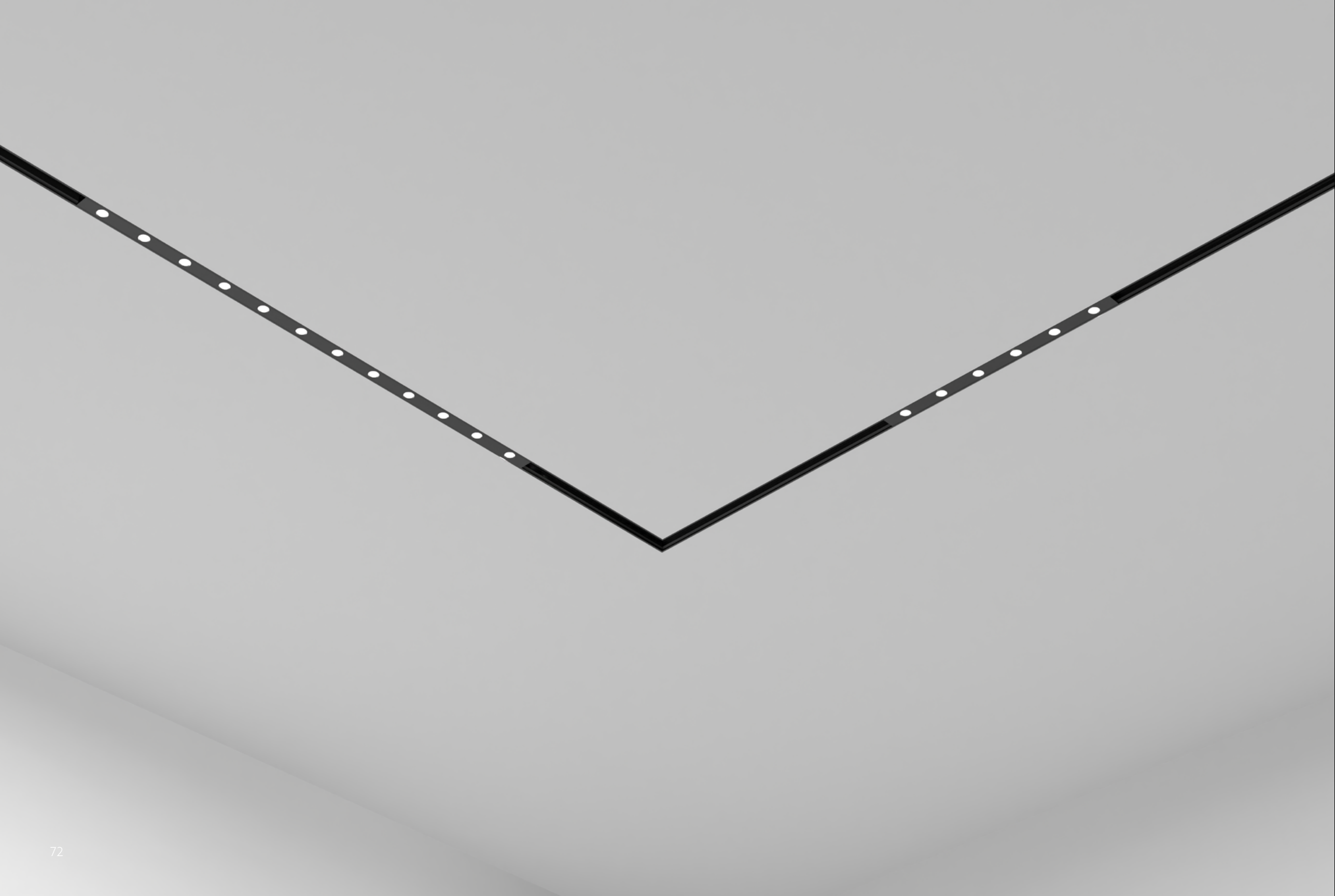


QUE10

6W | 12W
408LM | 816LM
BLACK | WHITE

ADDITIONAL INFO

- Input Voltage: 24V
- CCT: 27K, 30K, 35K, 40K
- Beam Angle: 36° / 45°

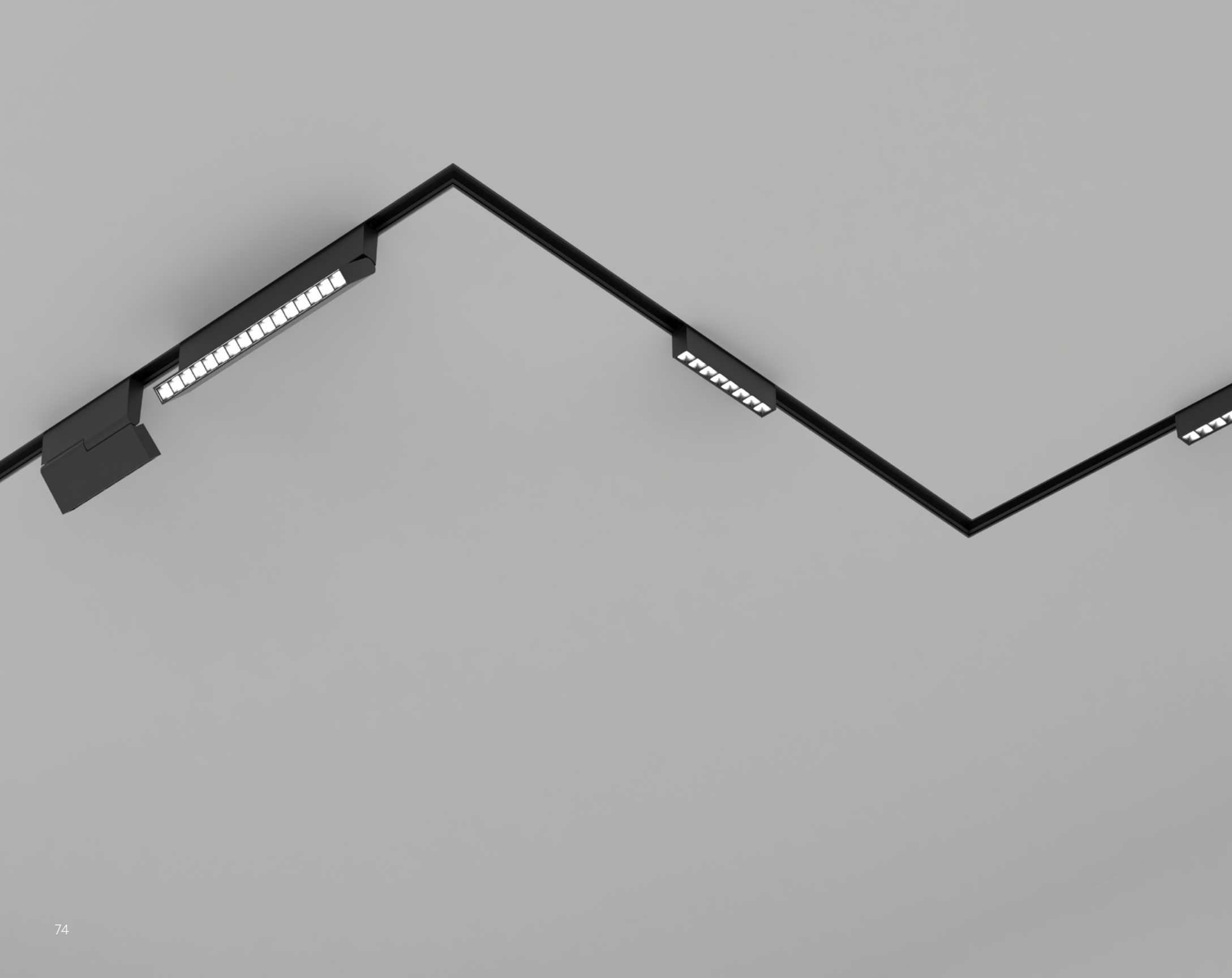


QUE13

6W | 12W
330LM | 660LM
BLACK | WHITE

ADDITIONAL INFO

- Input Voltage: 24V
- CCT: 27K, 30K, 35K, 40K
- Beam Angle: 36° / 45°



QUE16

8W | 16W
640LM | 1280LM
BLACK | WHITE

ADDITIONAL INFO

- Input Voltage: 24V
- CCT: 27K, 30K, 35K, 40K
- Beam Angle: 24° / 36° / 45°

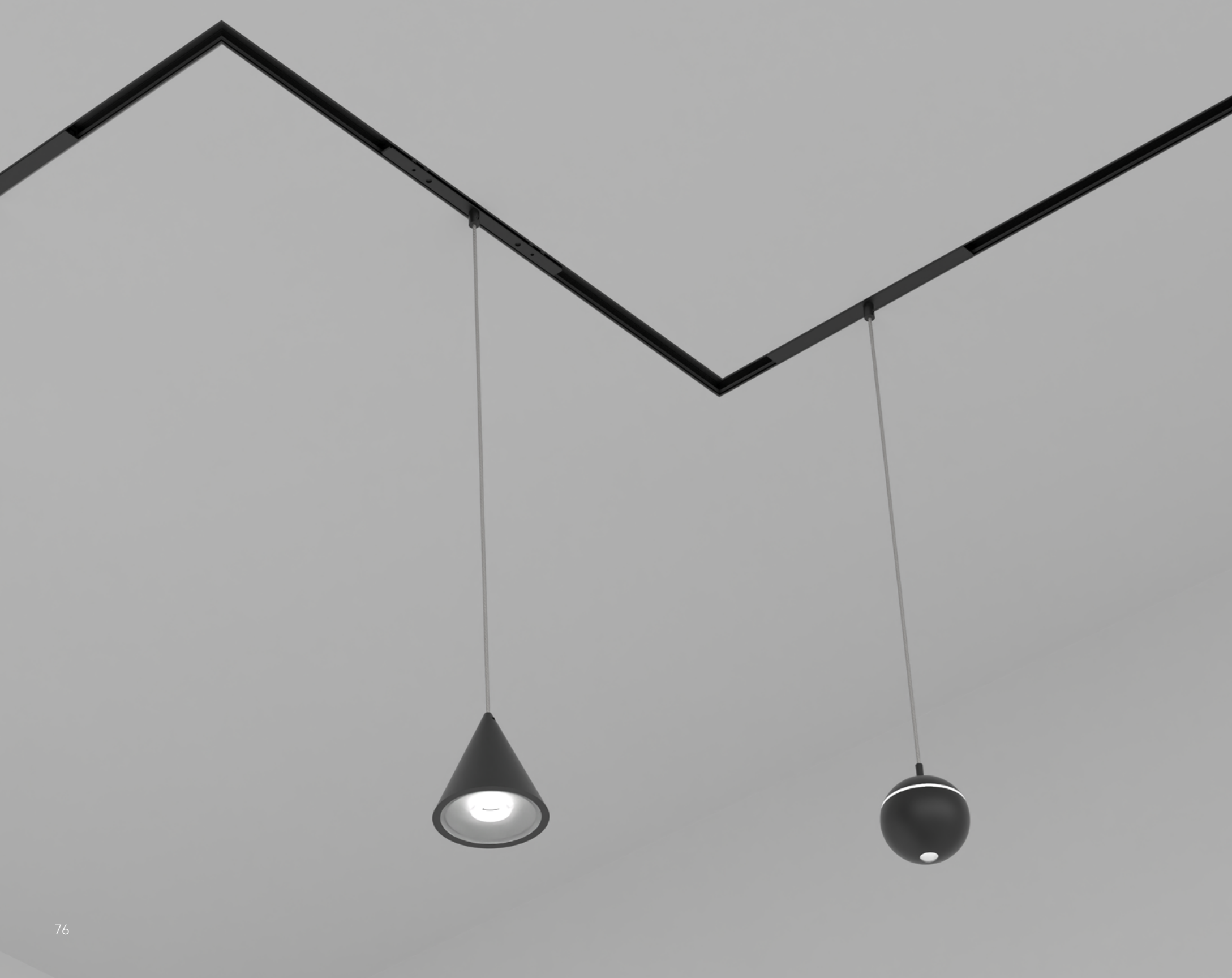


QUE17

8W | 16W
640LM | 1280LM
BLACK | WHITE

ADDITIONAL INFO

- Input Voltage: 24V
- CCT: 27K, 30K, 35K, 40K
- Beam Angle: 24° / 45°



QUE15

8W
425LM
BLACK | WHITE

ADDITIONAL INFO

- Input Voltage: 24V
- CCT: 27K, 30K, 35K, 40K
- Beam Angle: 15° / 24° / 40°



QUE18

6W
352LM/W
BLACK | WHITE

ADDITIONAL INFO

- Input Voltage: 24V
- CCT: 27K, 30K, 35K, 40K
- Beam Angle: 24° / 40°



QUE19

5W
506LM/W
BLACK | WHITE

ADDITIONAL INFO

- Input Voltage: 24V
- CCT: 27K, 30K, 35K, 40K
- Beam Angle: 330°



QUE20

3W
220LM/W
BLACK | WHITE

ADDITIONAL INFO

- Input Voltage: 24V
- CCT: 27K, 30K, 35K, 40K
- Beam Angle: 360°



Rayhil X Input Creative Studio

80 INDIGO WALL SCONCE

The Indigo Sconce is a dramatic statement piece that is both alluring and artful. Designed by Input Creative Studio using elements of Walnut and Chrome to create this minimalistic masterpiece





IND

10W
2700K
350LM

DRIVER

Remote Driver - 24V
Integrate Driver - 120V

ADDITIONAL INFO

- Input Voltage: 24V / 120V
- Triac Dimming
- Integrated LED

MOUNTING

Bracket Mounted - 24V
Plaster + Bracket Mounted - 120V

FINISHES

Walnut Wood & Chrome

84 INSITE WALL LUMINARY

The Insite Series redefines the concept of illumination with its unique approach. This fixture is a testament to versatility, empowering the beholder to determine its application. Whether it's a minimalist wall fixture, an art picture light source, a distinctive address sign, or the cornerstone of an elaborate wall design, the Insite Series offers endless possibilities to enhance any space with its adaptable and innovative design.





INS

1FT | 12W | 420LM
2FT | 17W | 595LM
3FT | 22W | 770LM
4FT | 22W | 770LM

COLOR TEMPERATURE

2200K
2700K
3000K
3500K

ADDITIONAL INFO

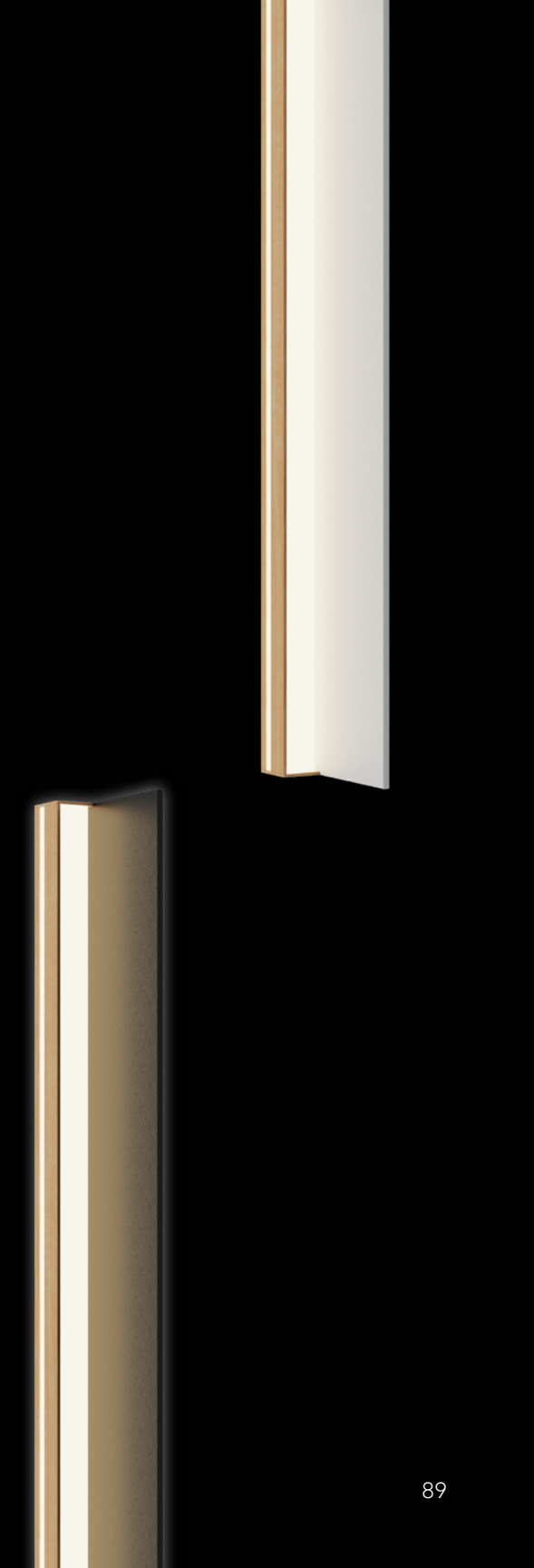
- Input Voltage: 120-277V
- Dimming: Triac/0-10V
- Integrated LED

PLATE FINISHES

Black
White

TRIM FINISHES

Black
White
Wood



88 INFUSE CYLINDER

The Infuse Cylinder, crafted by Input Creative Studio, blends sleek aesthetics with flexible modular features, epitomizing a sophisticated and inventive approach to lighting design. This distinctive fixture exemplifies the studio's flair for creating adaptable, cutting-edge interior elements





WALL CYLINDER



INFW-R

ROUND

6W | 9W | 12W Selectable

80LM/W

5" x 12.375" x 2.5"

ADDITIONAL INFO

- Input Voltage: UNV 110-277
- CCT: 27K, 30K, 35K, 40K, 50K
- Dimming: Triac/0-10V
- Optional Signage



INFW-S

SQUARE

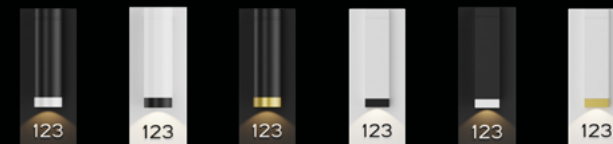
6W | 9W | 12W Selectable

80LM/W

5" x 12.375" x 2.125"

FINISHES

- Base: Black, White, Custom
- Trim: Black, White, Brass, Wood, Custom





SURFACE CYLINDER



INFS-R

ROUND

6W | 9W | 12W Selectable
80LM/W
4.5" x 8.625" x 2.5"

ADDITIONAL INFO

- Input Voltage: UNV 110-277
- CCT: 27K, 30K, 35K, 40K, 50K
- Dimming: Triac/0-10V



INFS-S

SQUARE

6W | 9W | 12W Selectable
80LM/W
4.5" x 8.625" x 2.125"

FINISHES

- Base: Black, White, Custom
- Trim: Black, White, Brass, Wood, Custom





PENDANT CYLINDER



INFP-R

ROUND

6W | 9W | 12W Selectable

80LM/W

4.5" x 22.5" x 2.5"

ADDITIONAL INFO

- Input Voltage: UNV 110-277
- CCT: 27K, 30K, 35K, 40K, 50K
- Dimming: Triac/0-10V



INFP-S

SQUARE

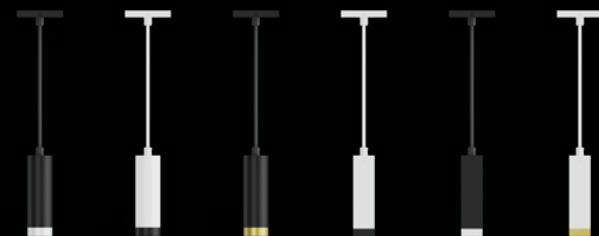
6W | 9W | 12W Selectable

80LM/W

4.5" x 22.5" x 2.125"

FINISHES

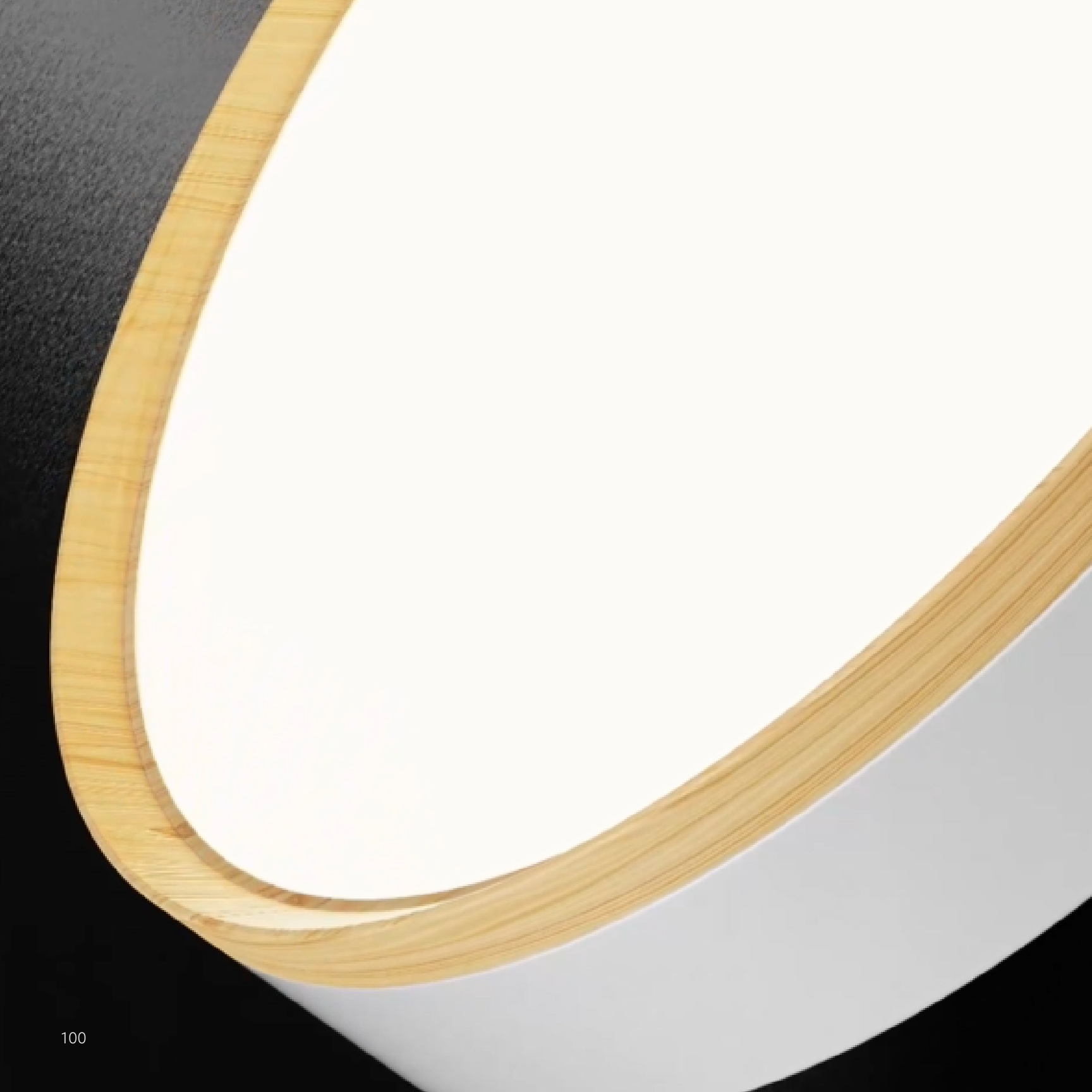
- Base: Black, White, Custom
- Trim: Black, White, Brass, Wood, Custom



96 INVOA CEILING FIXTURE

The Inova ceiling fixture by Input Creative Studio artfully blends modern design with traditional elegance, showcasing the studio's ability to innovate classic interior elements. This piece represents a harmonious fusion of artistic flair and functional ingenuity, marking a new era in contemporary lighting design





INV

9IN | 15W | 1200LM
12IN | 18W | 1440LM
16IN | 26W | 2080LM
20IN | 32W | 2650LM

COLOR TEMPERATURE

2200K
2700K
3000K
3500K
4000K
5CCT Selectable

ADDITIONAL INFO

- Input Voltage: 120-277V
- Dimming: Triac/0-10V

MOUNTING

Surface
Stem

LENS

Frosted
Anti-Glare

BASE FINISHES

Black
White
Custom

RIM FINISHES

Black
White
Brass
Wood
Custom

FINISHES



