

Report No.:

Test Time: 2022-06-28 16:50:45

LUMINAIRE PHOTOMETRIC TEST REPORT

Luminaire Property

Manufacturer: rayhil
Luminaire Type Que-13-6-30-36-BK
Lamp Type:
Luminous Width: 12 mm
Luminous Length: 300 mm
Luminous Height: 8 mm

Voltage(V): 48.00 V
Current(A): 0.2090 A
Power(W): 10.03 W
Power Factor: 1.0000
Lamp Luminous Flux: 540.65

Photometric Results

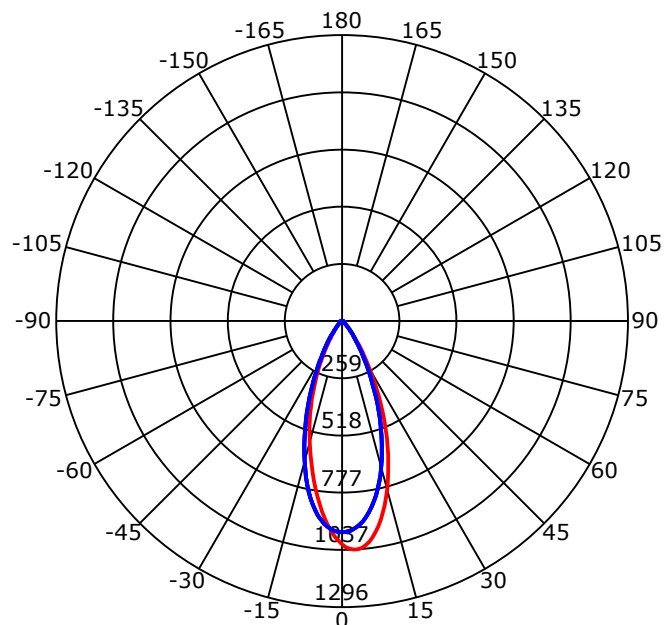
CIE Class: Direct
Luminaire Luminous Flux: 540.646 lm
Downward Ratio: 100.00%
Luminaire Efficacy Rating(LER): 53.90 lm/W
Beam Angle(50%) C0-180,C90-270: 38.8,41.0
Field Angle(10%) C0-180,C90-270: 70.2,72.0
S/MH C0-180,C90-270: 0.650,0.650

Max. Intensity: 1036.51 cd
Max.Intensity Angle: C=0 Gamma=3
Upward Ratio: 0.00%
Efficacy: 100.00%
Center Intensity: 1011.86 cd
Effective Luminous Flux: 477.07 lm
ERP(ϕ use)(120deg): 534.73 lm

Picture of Luminaire



Luminous Intensity Distribution Curve



Beam Angle(50%) C0-180,C90-270: 38.8 deg,41.0 deg

C0-180 — C90-270 —

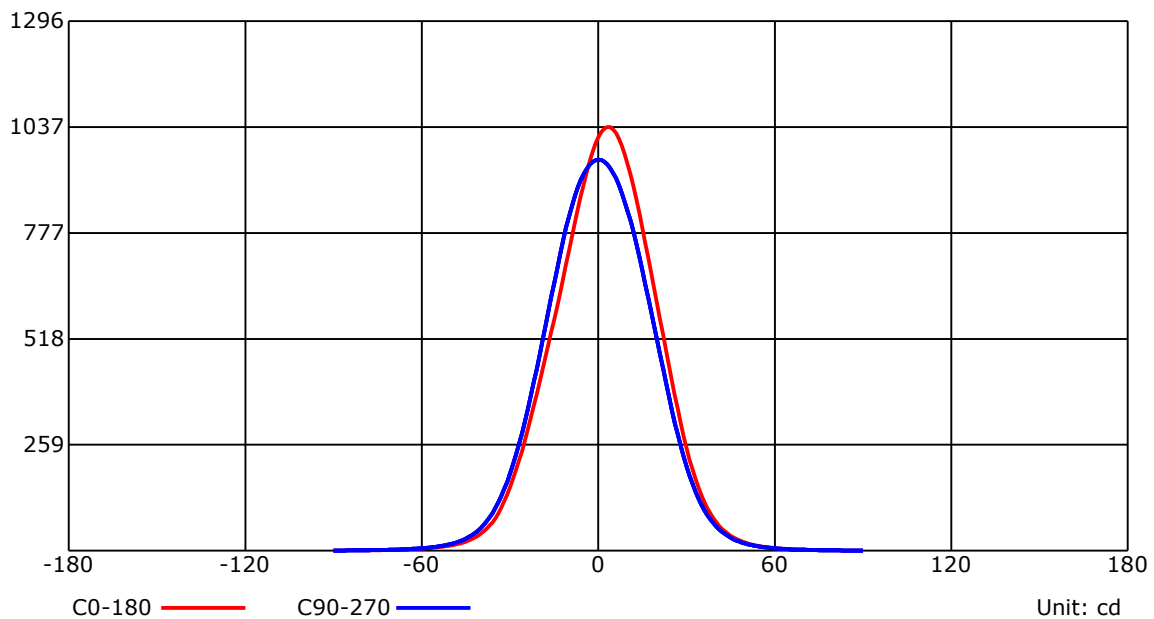
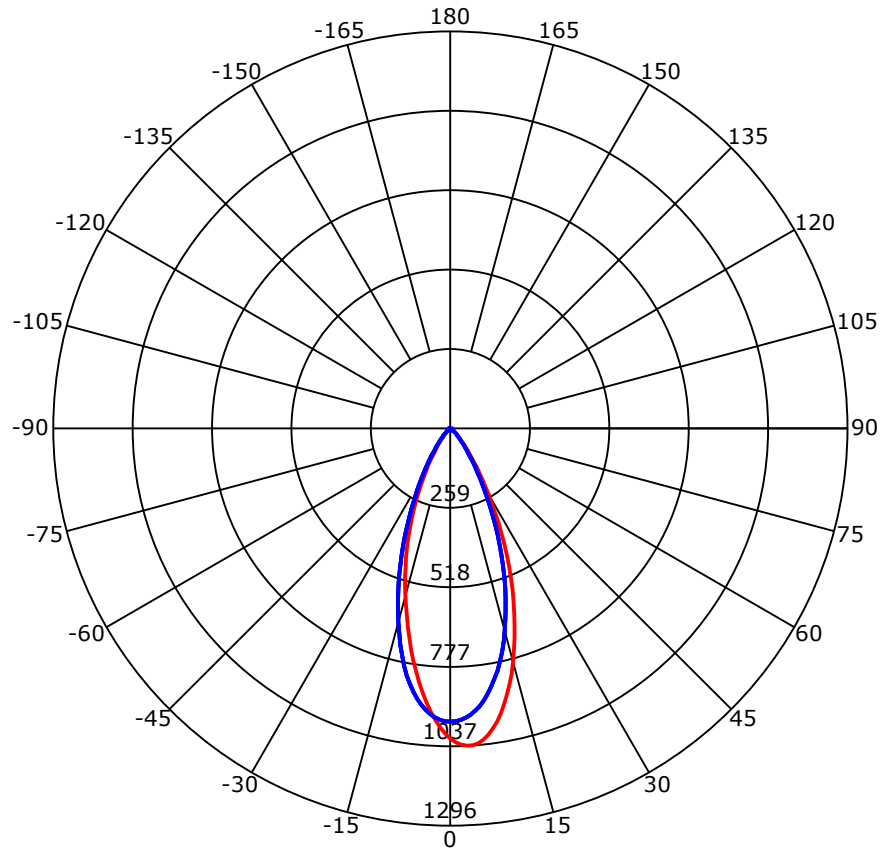
C Range: 0 - 360 Deg
C Interval: 30.0 Deg
Test Speed: High
Temperature:
Operators:
Test Date: 2022-06-28 16:50:45

G Range: 0 - 90 Deg
G Interval: 1.0 Deg
Test System: Huipu CPM-1800B Goniophotometer
Humidity:
Test Distance: 8.86 m
Remarks:

Report No.:

Test Time: 2022-06-28 16:50:45

Luminous Intensity Distribution Curve



C Range: 0 - 360 Deg

C Interval: 30.0 Deg

Test Speed: High

Temperature:

Operators:

Test Date: 2022-06-28 16:50:45

G Range: 0 - 90 Deg

G Interval: 1.0 Deg

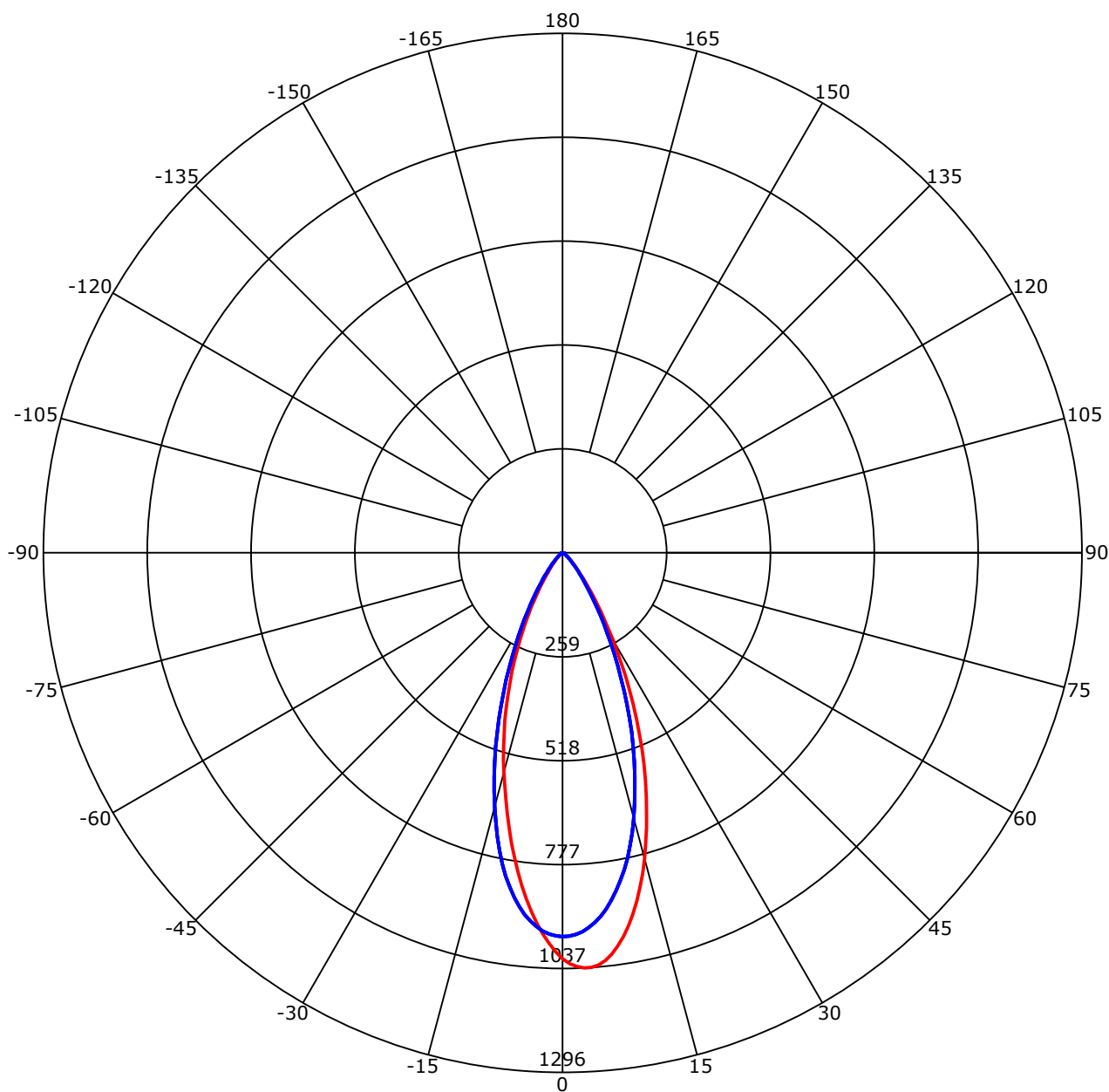
Test System: Huipu CPM-1800B Goniophotometer

Humidity:

Test Distance: 8.86 m

Remarks:

Luminous Intensity Distribution Curve



C0-180 — C90-270 —

Unit: cd/klm

C Range: 0 - 360 Deg

C Interval: 30.0 Deg

Test Speed: High

Temperature:

Operators:

Test Date: 2022-06-28 16:50:45

G Range: 0 - 90 Deg

G Interval: 1.0 Deg

Test System: Huipu CPM-1800B Goniophotometer

Humidity:

Test Distance: 8.86 m

Remarks:

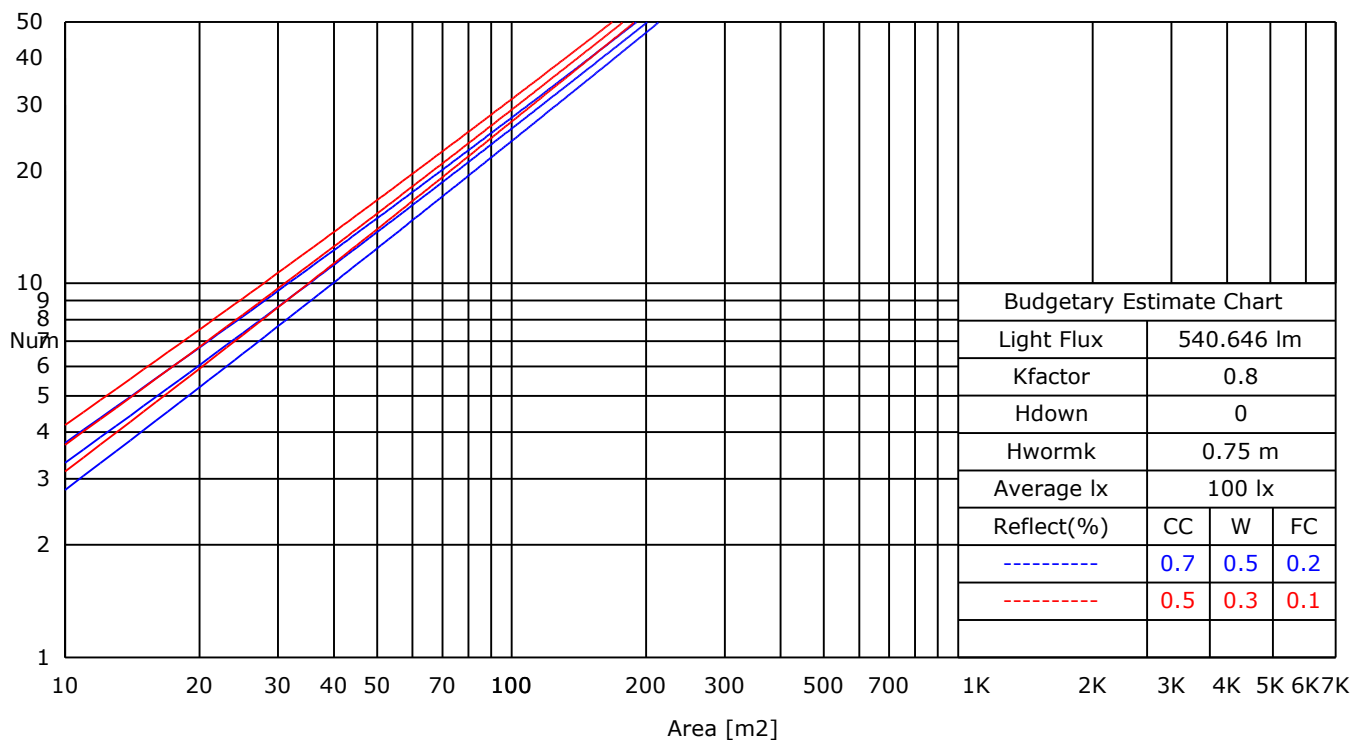
Report No.:

Test Time: 2022-06-28 16:50:45

UTILIZATION FACTORS TABLE

RHOCC	80			70			50			30			10			0
RHOW	50	30	10	50	30	10	50	30	10	50	30	10	50	30	10	0
RCR	COEFFICIENTS OF UTILIZATION FOR RHOFC=20															
0	1.19	1.19	1.19	1.16	1.16	1.16	1.11	1.11	1.11	1.06	1.06	1.06	1.02	1.02	1.02	1.00
1	1.02	1.00	0.98	1.01	0.98	0.96	0.97	0.95	0.92	0.93	0.90	0.88	0.86	0.84	0.81	0.76
2	0.97	0.95	0.94	0.96	0.94	0.92	0.93	0.91	0.88	0.89	0.86	0.84	0.84	0.81	0.78	0.73
3	0.94	0.92	0.90	0.93	0.90	0.89	0.90	0.87	0.85	0.86	0.83	0.80	0.82	0.78	0.75	0.71
4	0.90	0.88	0.87	0.89	0.87	0.85	0.87	0.84	0.81	0.84	0.80	0.77	0.80	0.76	0.73	0.68
5	0.87	0.85	0.84	0.86	0.84	0.83	0.84	0.81	0.79	0.81	0.77	0.75	0.77	0.73	0.70	0.66
6	0.84	0.83	0.82	0.83	0.81	0.80	0.81	0.78	0.76	0.79	0.75	0.72	0.75	0.71	0.68	0.64
7	0.82	0.80	0.79	0.81	0.79	0.78	0.79	0.76	0.74	0.76	0.73	0.70	0.73	0.69	0.66	0.62
8	0.79	0.78	0.77	0.79	0.77	0.75	0.76	0.74	0.72	0.74	0.71	0.68	0.71	0.67	0.64	0.61
9	0.77	0.76	0.75	0.76	0.75	0.73	0.74	0.72	0.70	0.72	0.69	0.66	0.70	0.65	0.62	0.59
10	0.75	0.74	0.73	0.74	0.73	0.72	0.72	0.70	0.68	0.70	0.67	0.64	0.68	0.64	0.61	0.58

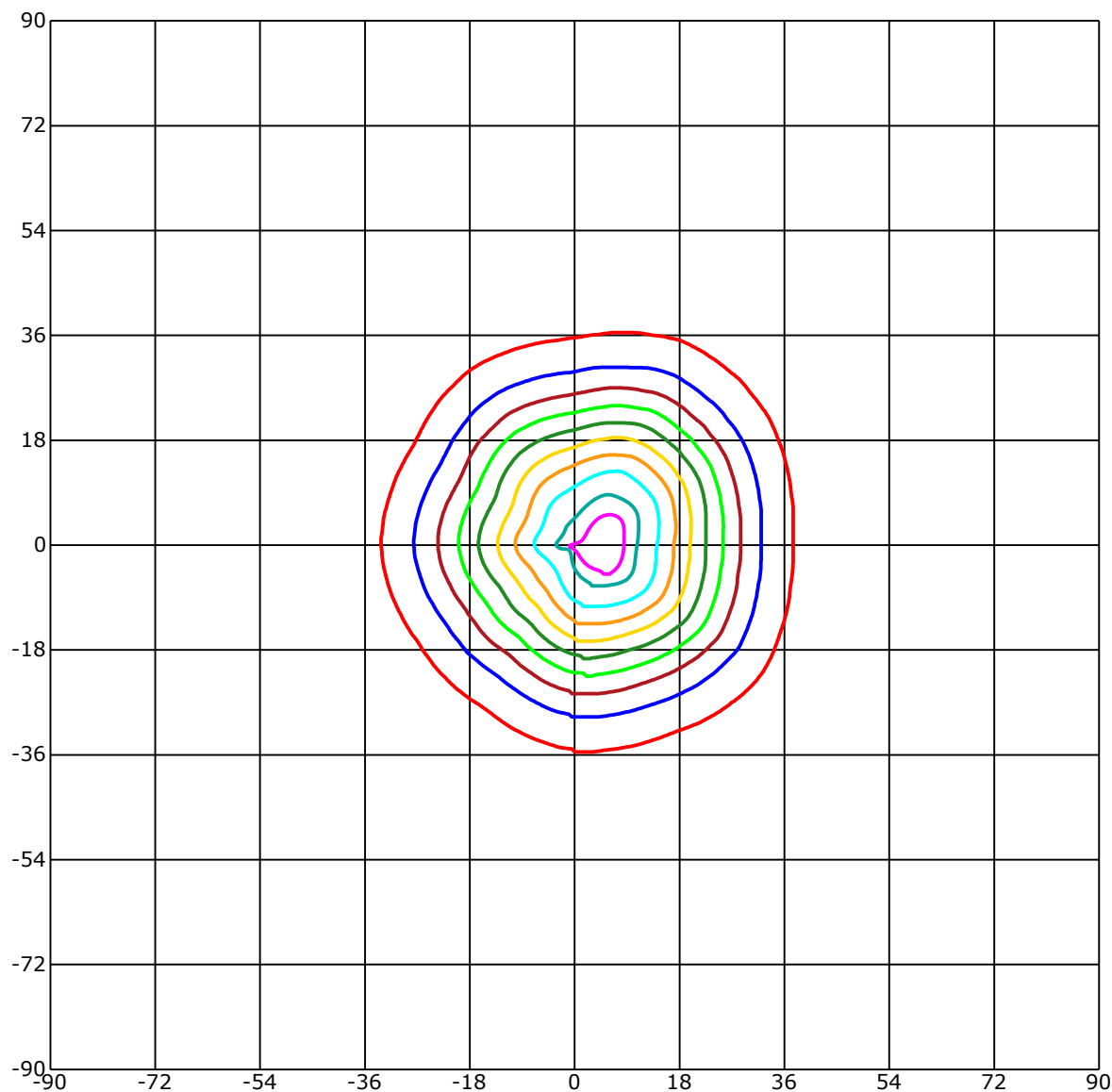
LUMINAIRE BUDGETARY ESTIMATE DIAGRAM



C Range: 0 - 360 Deg
C Interval: 30.0 Deg
Test Speed: High
Temperature:
Operators:
Test Date: 2022-06-28 16:50:45

G Range: 0 - 90 Deg
G Interval: 1.0 Deg
Test System: Huipu CPM-1800B Goniophotometer
Humidity:
Test Distance: 8.86 m
Remarks:

ISOCANDELA DIAGRAM (RECTANGULAR)



Unit of intensity:cd Imax(100%): 1036.509 cd

984.683(95%Imax)	518.254(50%Imax)
932.858(90%Imax)	414.604(40%Imax)
829.207(80%Imax)	310.953(30%Imax)
725.556(70%Imax)	207.302(20%Imax)
621.905(60%Imax)	103.651(10%Imax)

C Range: 0 - 360 Deg

C Interval: 30.0 Deg

Test Speed: High

Temperature:

Operators:

Test Date: 2022-06-28 16:50:45

G Range: 0 - 90 Deg

G Interval: 1.0 Deg

Test System: Huipu CPM-1800B Goniophotometer

Humidity:

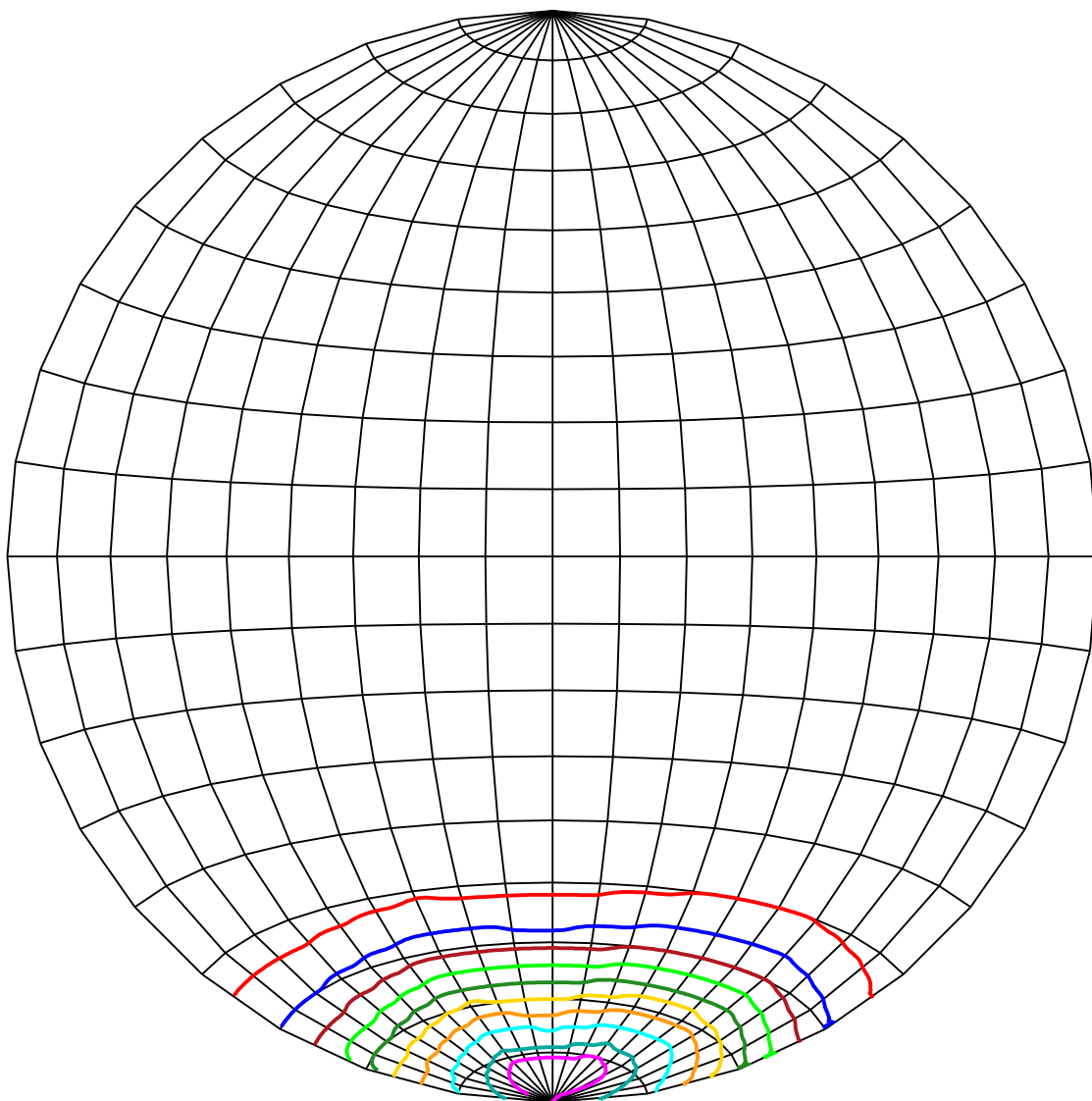
Test Distance: 8.86 m

Remarks:

Report No.:

Test Time: 2022-06-28 16:50:45

ISOCANDELA DIAGRAM (SPHERE)



Unit of intensity:cd Imax(100%): 1036.509 cd

984.683(95%Imax)	518.254(50%Imax)
932.858(90%Imax)	414.604(40%Imax)
829.207(80%Imax)	310.953(30%Imax)
725.556(70%Imax)	207.302(20%Imax)
621.905(60%Imax)	103.651(10%Imax)

C Range: 0 - 360 Deg

C Interval: 30.0 Deg

Test Speed: High

Temperature:

Operators:

Test Date: 2022-06-28 16:50:45

G Range: 0 - 90 Deg

G Interval: 1.0 Deg

Test System: Huipu CPM-1800B Goniophotometer

Humidity:

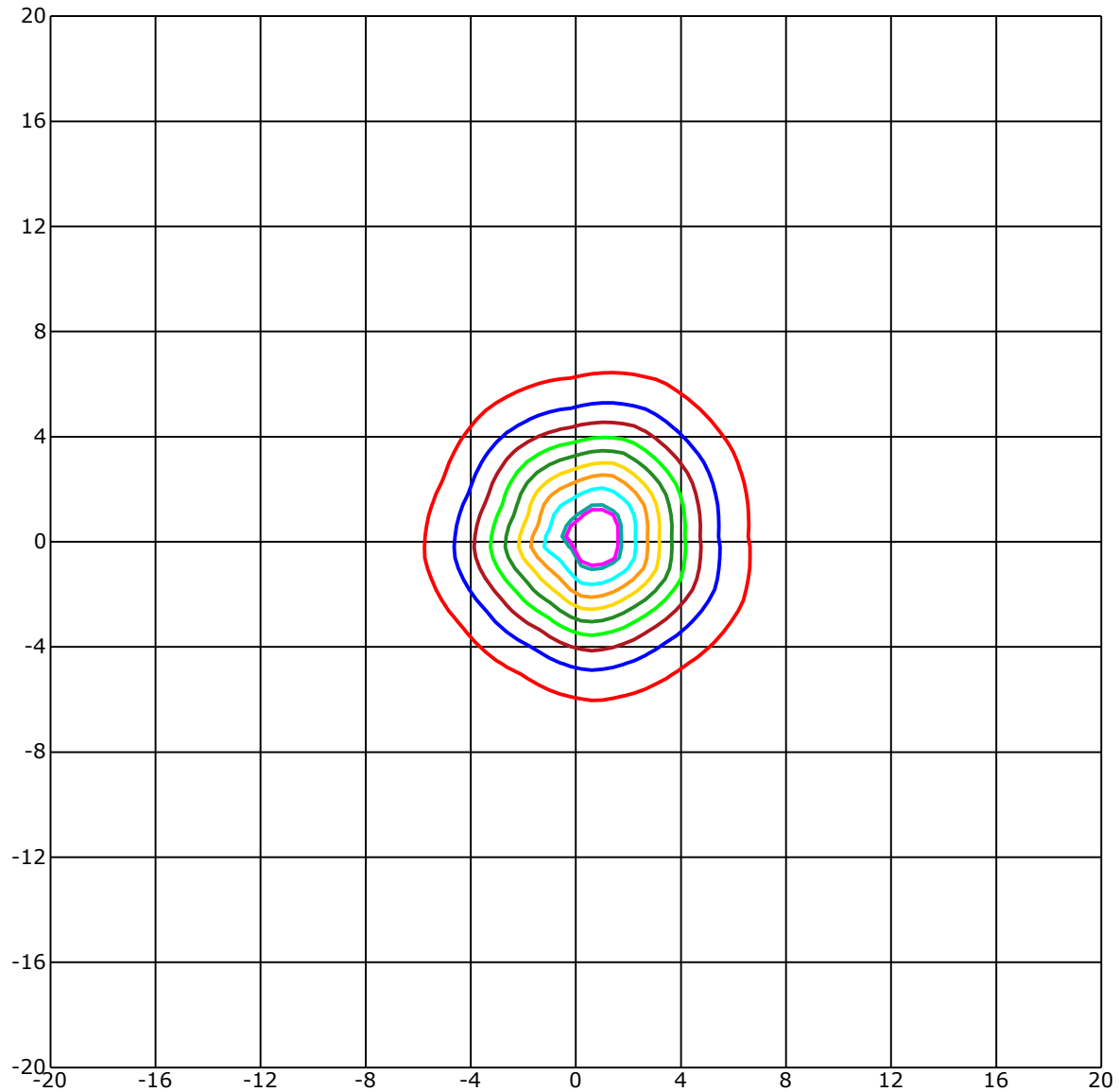
Test Distance: 8.86 m

Remarks:

Report No.:

Test Time: 2022-06-28 16:50:45

ISOLX DIAGRAM



Unit of illumination:lx Height of plane:10.0(m)/32.81(ft)

9.497(1%E _{max})	5.161(0%E _{max})
9.29(1%E _{max})	4.129(0%E _{max})
8.258(1%E _{max})	3.097(0%E _{max})
7.226(1%E _{max})	2.065(0%E _{max})
6.194(1%E _{max})	1.032(0%E _{max})

C Range: 0 - 360 Deg

C Interval: 30.0 Deg

Test Speed: High

Temperature:

Operators:

Test Date: 2022-06-28 16:50:45

G Range: 0 - 90 Deg

G Interval: 1.0 Deg

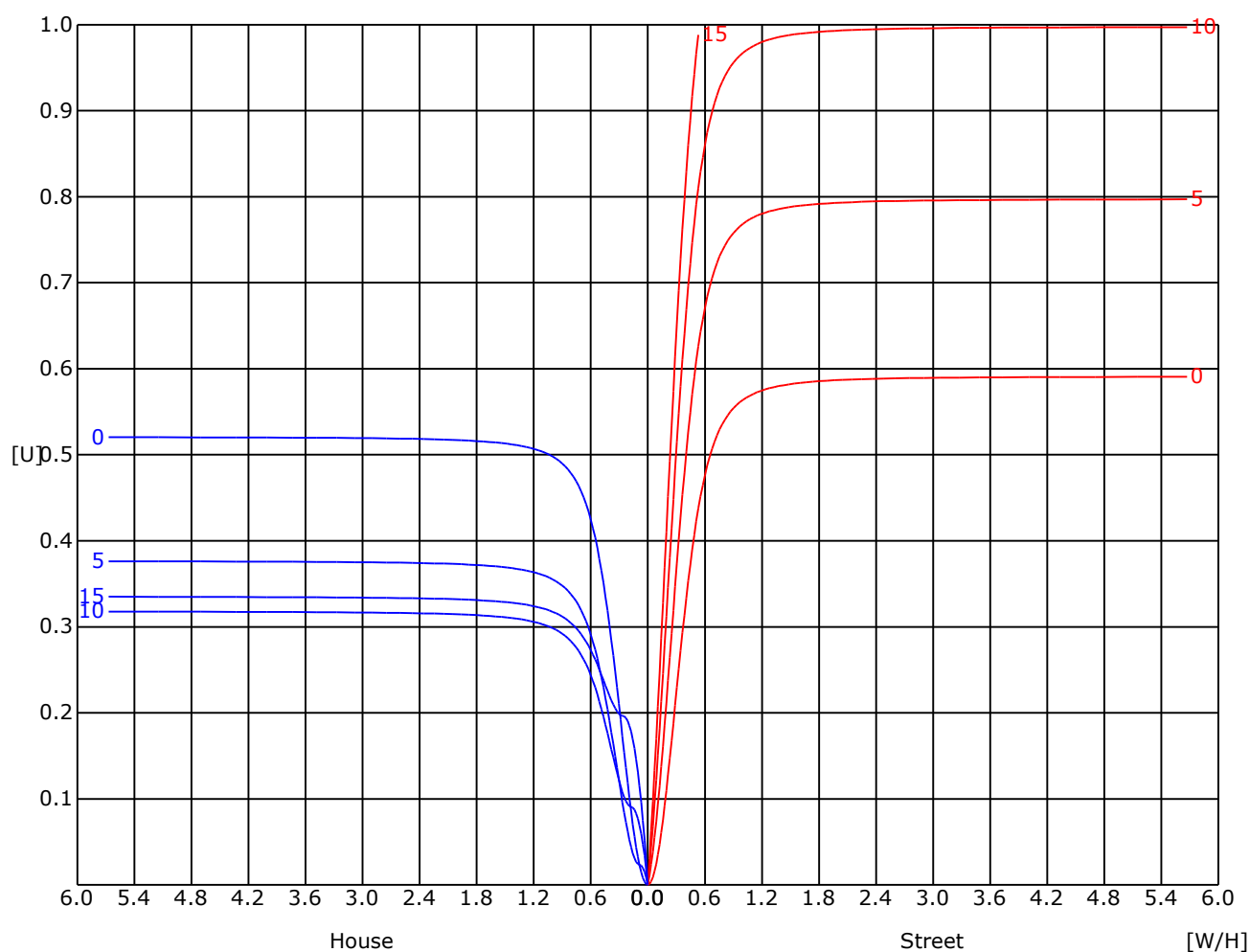
Test System: Huipu CPM-1800B Goniophotometer

Humidity:

Test Distance: 8.86 m

Remarks:

UTILIZATION FACTOR DIAGRAM (ROAD)



C Range: 0 - 360 Deg

C Interval: 30.0 Deg

Test Speed: High

Temperature:

Operators:

Test Date: 2022-06-28 16:50:45

G Range: 0 - 90 Deg

G Interval: 1.0 Deg

Test System: Huipu CPM-1800B Goniophotometer

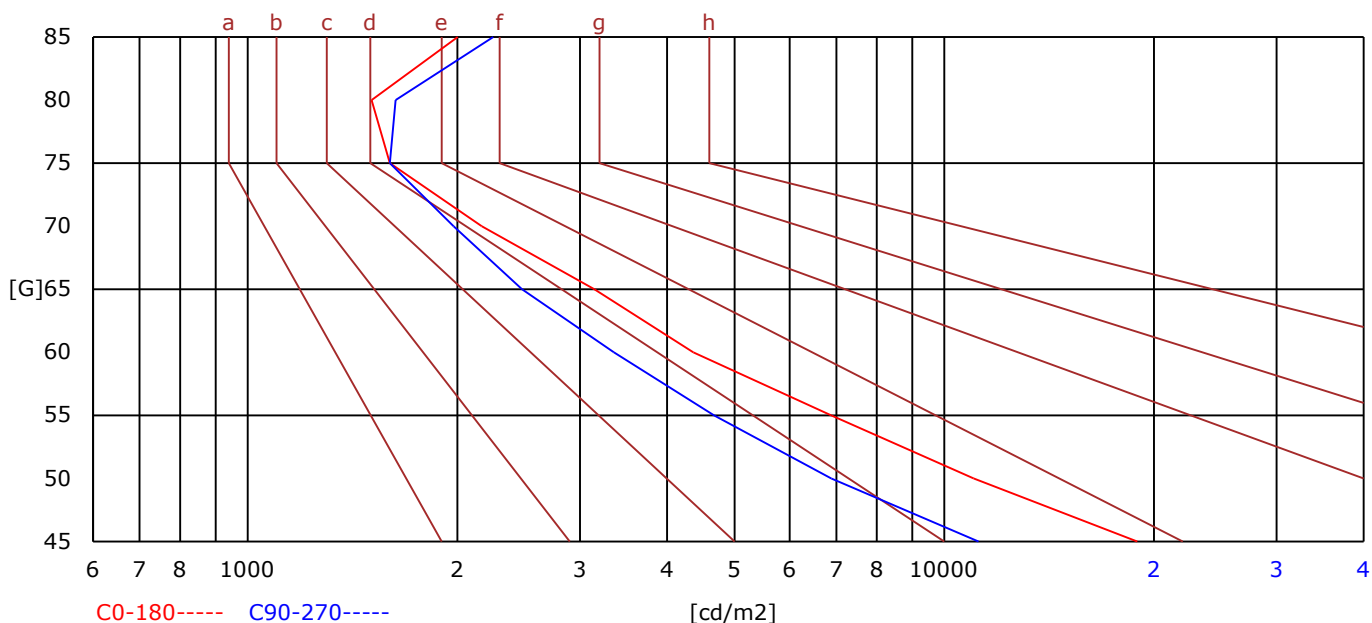
Humidity:

Test Distance: 8.86 m

Remarks:

BRIGHT LIMIT DIAGRAM

C/G	45	50	55	60	65	70	75	80	85
C0	18934	11025	6881	4361	3147	2168	1601	1507	2002
C90	11194	6886	4676	3358	2477	1976	1601	1632	2252
Dazzle	Quality	Illuminance	---	---	---	---	---	---	---
1.15	A	2000	1000	500	<=300				
1.5	B		2000	1000	500	<=300			
1.85	C			2000	1000	500	<=300		
2.2	D				2000	1000	500	<=300	
2.55	E					2000	1000	500	<=300
---	---	a	b	c	d	e	f	g	h



C Range: 0 - 360 Deg

C Interval: 30.0 Deg

Test Speed: High

Temperature:

Operators:

Test Date: 2022-06-28 16:50:45

G Range: 0 - 90 Deg

G Interval: 1.0 Deg

Test System: Huipu CPM-1800B Goniophotometer

Humidity:

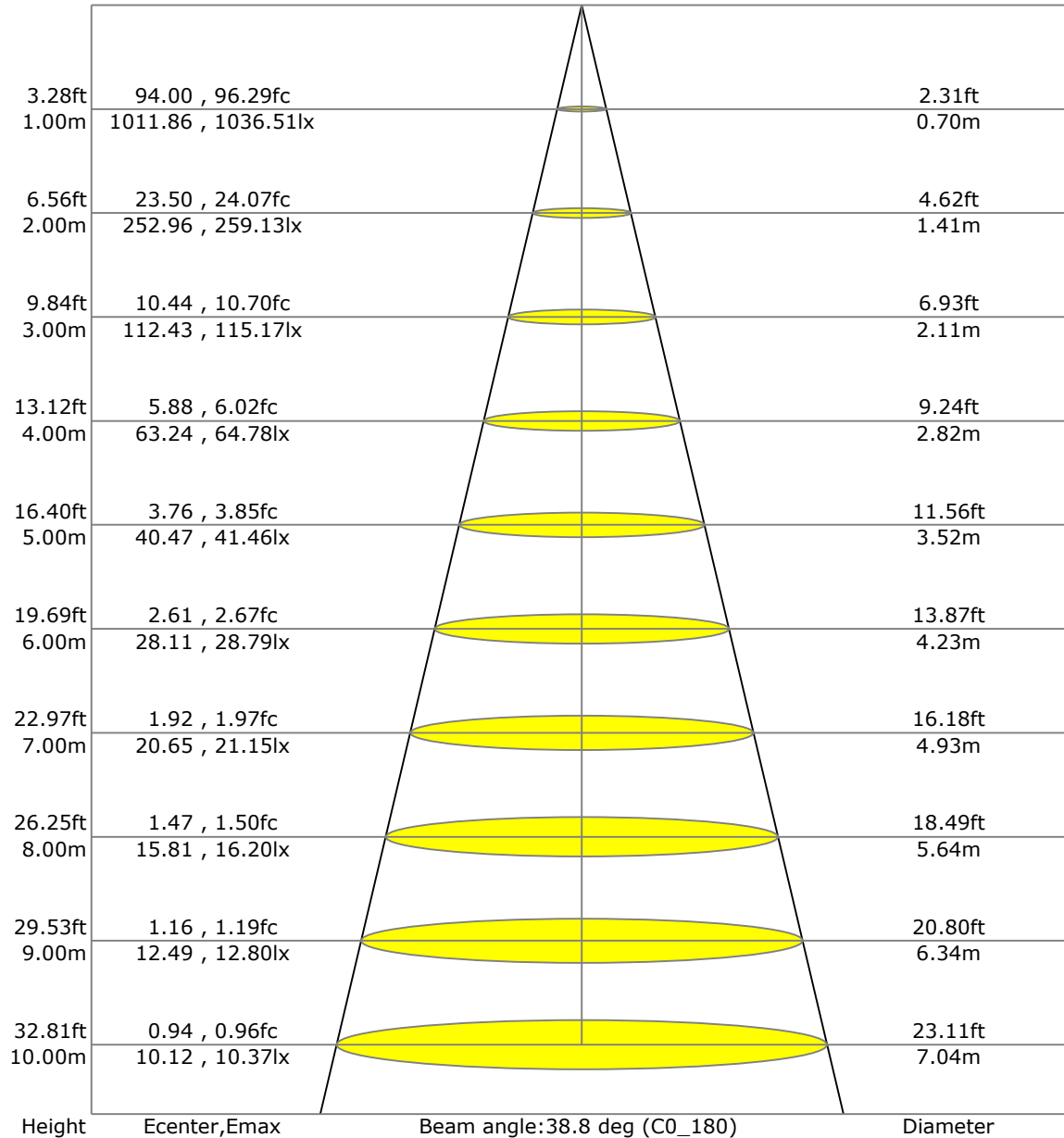
Test Distance: 8.86 m

Remarks:

Report No.:

Test Time: 2022-06-28 16:50:45

LX-DISTANCE DIAGRAM



C Range: 0 - 360 Deg

C Interval: 30.0 Deg

Test Speed: High

Temperature:

Operators:

Test Date: 2022-06-28 16:50:45

G Range: 0 - 90 Deg

G Interval: 1.0 Deg

Test System: Huipu CPM-1800B Goniophotometer

Humidity:

Test Distance: 8.86 m

Remarks:

Report No.:

Test Time: 2022-06-28 16:50:45

UGR(Unified Glare Rating) TABLE

RHOCC	70	70	50	50	30	70	70	50	50	30
RHOW	50	30	50	30	30	50	30	50	30	30
RHOF	20	20	20	20	20	20	20	20	20	20
Room Size X Y	Viewed Endwise					Viewed Crosswise				
2H 2H	19.23	19.28	19.43	19.47	19.71	19.15	19.20	19.34	19.38	19.63
3H	19.21	19.27	19.42	19.46	19.70	19.12	19.18	19.33	19.37	19.62
4H	19.20	19.25	19.41	19.45	19.70	19.11	19.16	19.32	19.36	19.61
6H	19.18	19.24	19.40	19.44	19.69	19.09	19.15	19.31	19.35	19.60
8H	19.17	19.23	19.39	19.43	19.68	19.08	19.14	19.30	19.34	19.59
12H	19.16	19.22	19.39	19.42	19.68	19.07	19.13	19.30	19.33	19.59
4H 2H	19.29	19.34	19.50	19.53	19.78	19.22	19.27	19.43	19.47	19.71
3H	19.27	19.32	19.49	19.53	19.78	19.20	19.26	19.43	19.46	19.72
4H	19.26	19.31	19.49	19.52	19.78	19.19	19.24	19.42	19.45	19.71
6H	19.24	19.29	19.48	19.51	19.77	19.17	19.22	19.41	19.44	19.70
8H	19.23	19.28	19.47	19.50	19.77	19.16	19.21	19.40	19.43	19.70
12H	19.21	19.26	19.46	19.49	19.76	19.14	19.19	19.39	19.42	19.69
8H 4H	19.28	19.34	19.50	19.54	19.79	19.22	19.27	19.44	19.48	19.73
6H	19.25	19.29	19.50	19.53	19.80	19.20	19.25	19.45	19.48	19.76
8H	19.24	19.28	19.50	19.53	19.80	19.19	19.23	19.45	19.48	19.75
12H	19.22	19.26	19.49	19.52	19.80	19.17	19.21	19.44	19.47	19.75
12H 4H	19.26	19.31	19.51	19.54	19.81	19.22	19.26	19.46	19.50	19.76
6H	19.25	19.29	19.51	19.54	19.81	19.21	19.25	19.47	19.50	19.78

C Range: 0 - 360 Deg

C Interval: 30.0 Deg

Test Speed: High

Temperature:

Operators:

Test Date: 2022-06-28 16:50:45

G Range: 0 - 90 Deg

G Interval: 1.0 Deg

Test System: Huipu CPM-1800B Goniophotometer

Humidity:

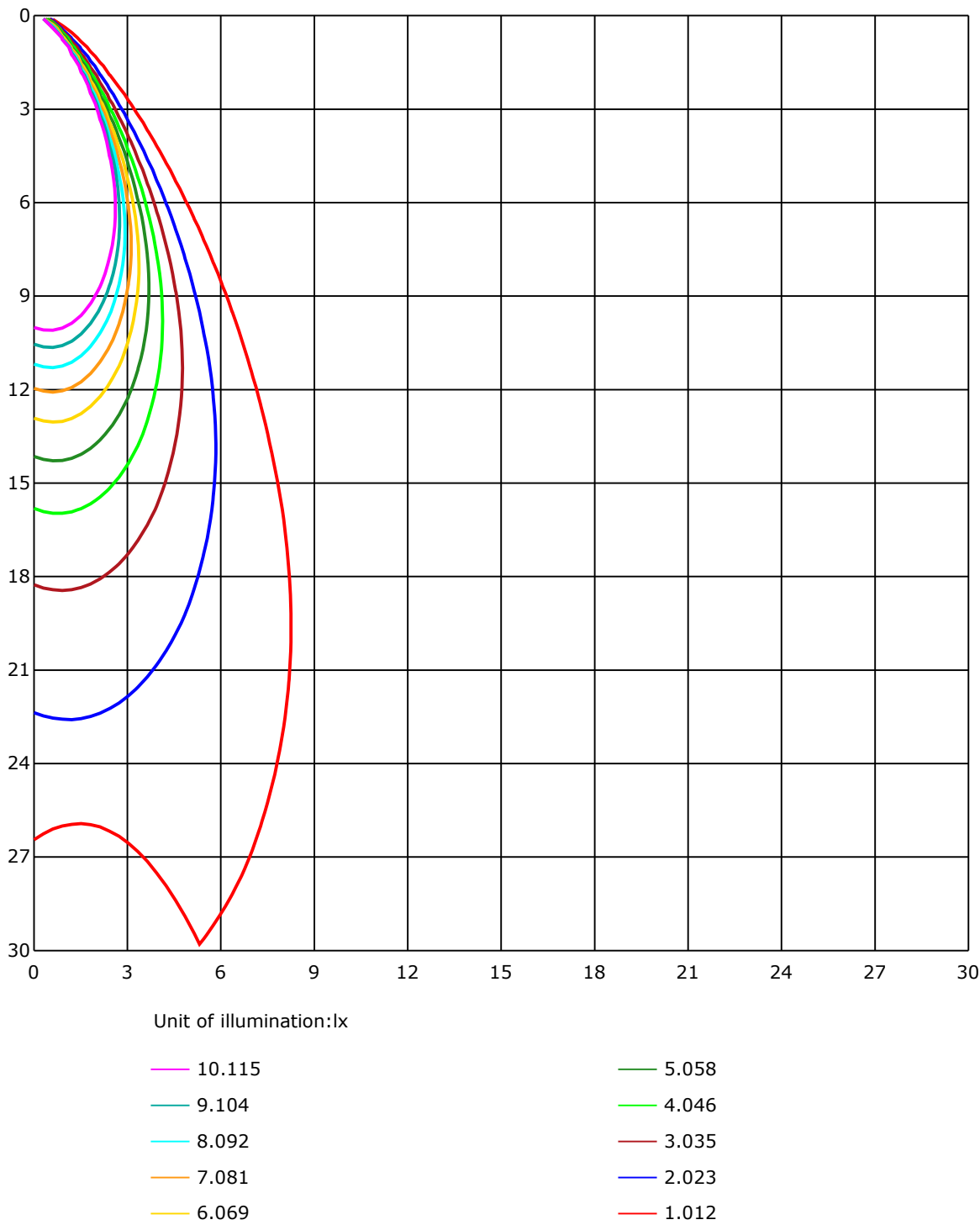
Test Distance: 8.86 m

Remarks:

G Range: 0 - 90 Deg
G Interval: 1.0 Deg
Test System: Huipu CPM-1800B Goniophotometer
Humidity:
Test Distance: 8.86 m
Remarks:

Report No.:

SPACE ISOLX DIAGRAM



Report No.:

Test Time: 2022-06-28 16:50:45

LUMINOUS DISTRIBUTION INTENSITY DATA

Gamma\C	C0	C30	C60	C90	C120	C150	C180	C210	C240	C270
G0	1011.86	951.18	935.32	956.75	977.4	979.75	1011.86	951.18	935.32	956.75
G1	1024.58	969.86	948.43	955.89	969.0	960.91	995.3	929.91	919.54	955.18
G2	1032.43	985.09	959.42	951.89	957.54	938.78	974.57	906.36	901.96	951.42
G3	1036.51	996.94	967.19	945.61	943.25	913.97	951.65	880.84	881.94	944.35
G4	1036.27	1005.5	970.57	936.5	926.06	886.1	925.98	854.0	859.41	934.22
G5	1031.09	1011.23	975.12	924.8	905.81	856.82	897.41	825.42	835.24	921.82
G6	1021.67	1012.65	974.42	910.91	884.06	827.23	866.79	796.46	809.88	906.83
G7	1007.7	1010.37	971.2	893.8	860.83	795.36	835.63	765.84	781.62	888.77
G8	990.04	1003.62	964.6	874.09	834.76	763.25	802.5	733.81	752.97	867.66
G9	968.92	992.86	954.16	852.35	808.23	730.28	768.83	700.45	722.2	843.32
G10	944.74	978.03	940.19	829.43	780.91	696.84	734.68	668.11	690.09	818.12
G11	917.35	959.66	923.47	805.33	752.81	663.48	699.9	634.36	656.49	789.63
G12	888.3	938.46	904.16	778.17	722.98	630.74	664.58	599.74	623.37	757.44
G13	857.37	912.95	882.34	748.49	692.05	598.56	630.27	567.32	590.55	724.63
G14	825.19	885.48	857.45	717.72	659.63	567.24	596.99	534.11	556.09	689.7
G15	789.0	854.55	829.66	685.69	627.6	536.07	566.3	503.03	521.94	655.71
G16	752.34	820.95	800.62	651.08	596.13	504.83	535.52	473.12	489.21	620.46
G17	714.66	785.55	768.28	616.54	564.41	474.37	504.05	443.37	455.45	584.51
G18	678.08	748.49	733.58	582.94	531.99	445.01	473.04	411.81	423.58	548.63
G19	640.32	710.97	697.39	548.71	501.53	415.34	443.13	381.35	391.09	513.78
G20	603.03	672.98	657.91	514.72	470.29	384.73	412.36	351.21	359.84	477.83
G21	565.51	634.04	619.2	480.34	439.6	354.82	382.29	322.32	330.25	443.29
G22	528.22	594.4	581.6	445.33	408.2	324.75	353.09	295.47	300.81	410.32
G23	489.99	555.31	544.71	410.95	375.07	296.41	324.28	269.49	274.2	377.5
G24	452.86	518.18	507.81	377.66	343.04	270.27	296.18	243.58	248.45	345.95
G25	415.89	479.87	470.92	344.3	312.9	243.9	269.33	219.33	223.88	315.8
G26	380.41	442.5	434.65	313.13	283.07	219.72	243.27	196.96	201.19	286.68
G27	345.4	405.45	399.64	284.17	256.38	196.72	219.8	175.29	179.53	259.83
G28	311.17	368.79	365.65	255.52	231.57	174.58	197.74	155.12	159.98	234.48
G29	279.38	335.11	332.05	229.77	208.65	154.72	176.23	136.59	141.77	211.32
G30	250.81	303.56	300.18	206.38	186.75	136.67	155.98	120.03	125.52	189.42
G31	223.02	273.49	271.69	184.16	166.58	119.63	137.85	105.19	110.53	168.85
G32	198.21	245.15	244.21	163.51	147.34	104.56	120.5	92.32	97.03	150.25
G33	175.76	218.86	219.41	144.13	130.31	90.82	105.03	80.38	85.09	133.21
G34	155.12	194.91	195.78	127.72	114.69	79.05	91.45	70.65	74.57	118.53
G35	136.35	172.78	174.27	112.73	100.95	69.0	79.6	62.33	66.33	104.8
G36	119.95	153.0	154.33	99.54	89.1	60.52	69.32	54.64	57.15	92.24

C Range: 0 - 360 Deg

C Interval: 30.0 Deg

Test Speed: High

Temperature:

Operators:

Test Date: 2022-06-28 16:50:45

G Range: 0 - 90 Deg

G Interval: 1.0 Deg

Test System: Huipu CPM-1800B Goniophotometer

Humidity:

Test Distance: 8.86 m

Remarks:

Report No.:

Test Time: 2022-06-28 16:50:45

LUMINOUS DISTRIBUTION INTENSITY DATA(Continue 1)

Gamma\C	C0	C30	C60	C90	C120	C150	C180	C210	C240	C270
G37	104.95	135.02	136.51	87.61	78.19	52.75	61.07	48.12	50.08	81.09
G38	92.08	119.08	120.42	77.24	68.69	46.31	53.46	42.39	44.12	71.28
G39	80.46	104.8	106.68	68.37	60.37	40.58	47.18	37.29	38.46	62.96
G40	70.34	91.92	94.36	59.74	53.14	35.72	41.53	32.97	33.83	55.34
G41	61.39	80.54	82.97	52.52	46.79	31.24	36.5	28.81	29.75	48.75
G42	53.85	71.04	73.32	46.24	41.29	27.4	32.18	25.59	26.22	43.02
G43	47.34	62.49	65.08	40.66	36.42	24.02	28.5	22.69	23.08	37.99
G44	41.45	54.79	57.3	35.87	32.26	21.35	25.28	20.25	20.25	33.52
G45	36.58	48.2	50.63	31.64	28.5	19.0	22.45	17.98	17.98	29.67
G46	32.26	42.63	44.82	27.71	25.2	16.88	19.86	16.17	16.01	26.22
G47	28.42	37.52	39.64	24.49	22.45	14.99	17.82	14.52	14.29	23.39
G48	25.2	33.13	35.09	21.82	19.86	13.58	16.01	13.19	11.54	20.96
G49	22.14	28.81	31.01	19.39	17.74	12.01	14.37	11.93	11.7	18.6
G50	19.47	25.51	27.4	17.27	15.94	10.83	13.11	10.83	10.44	16.64
G51	17.27	22.61	24.26	15.46	14.37	9.81	11.85	9.73	9.5	14.84
G52	15.46	19.94	21.59	14.13	13.19	8.95	10.83	8.95	8.48	13.34
G53	13.97	17.66	19.23	12.25	12.01	7.93	9.66	8.09	7.46	12.01
G54	12.17	15.62	17.19	10.99	10.83	7.22	8.79	7.3	7.22	10.91
G55	10.99	14.21	15.54	9.81	9.66	6.52	8.01	7.06	6.12	9.81
G56	9.81	12.4	14.44	8.87	8.79	5.97	7.3	6.12	5.49	8.87
G57	8.87	11.07	12.48	7.77	7.93	5.26	7.22	5.49	5.02	7.85
G58	7.93	9.89	11.23	7.22	7.3	4.95	6.2	5.1	4.71	7.22
G59	7.22	8.95	10.13	6.36	6.75	4.55	5.65	4.87	4.16	6.44
G60	6.44	7.85	9.73	5.73	6.04	3.92	5.18	4.32	3.77	5.97
G61	5.81	7.3	8.32	5.1	5.34	3.69	4.87	3.85	4.47	5.34
G62	5.1	6.36	7.38	4.79	4.87	3.14	4.4	3.61	2.98	4.87
G63	4.87	5.65	7.14	4.16	4.63	2.83	3.92	3.22	2.75	4.55
G64	4.24	5.02	6.12	3.77	4.08	2.59	3.69	2.9	2.51	3.92
G65	3.77	4.79	5.42	3.3	3.77	2.51	3.22	2.67	2.35	3.69
G66	3.45	4.16	4.95	2.9	3.3	2.35	2.98	2.51	2.35	3.3
G67	3.06	3.77	4.55	2.67	2.98	2.28	2.59	2.43	2.04	2.98
G68	2.75	3.3	4.0	2.51	2.67	1.73	2.51	2.43	1.65	2.67
G69	2.51	2.9	3.77	2.35	2.51	1.41	2.35	1.73	1.49	2.51
G70	2.43	2.67	3.22	2.35	2.43	1.26	1.65	1.49	1.41	2.43
G71	2.35	2.51	2.9	1.81	2.35	0.94	1.49	1.41	1.33	2.35
G72	2.04	2.35	2.67	1.57	2.12	0.86	1.41	1.33	1.1	2.12
G73	1.65	2.28	2.51	1.49	1.73	0.78	1.41	1.18	0.94	1.73

C Range: 0 - 360 Deg

C Interval: 30.0 Deg

Test Speed: High

Temperature:

Operators:

Test Date: 2022-06-28 16:50:45

G Range: 0 - 90 Deg

G Interval: 1.0 Deg

Test System: Huipu CPM-1800B Goniophotometer

Humidity:

Test Distance: 8.86 m

Remarks:

Report No.:

Test Time: 2022-06-28 16:50:45

LUMINOUS DISTRIBUTION INTENSITY DATA(Continue 2)

[illegible]

C Range: 0 - 360 Deg

C Interval: 30.0 Deg

Test Speed: High

Temperature:

Operators:

Test Date: 2022-06-28 16:50:45

G Range: 0 - 90 Deg

G Interval: 1.0 Deg

Test System: Huipu CPM-1800B Goniophotometer

Humidity:

Test Distance: 8.86 m

Remarks:

Report No.:

Test Time: 2022-06-28 16:50:45

LUMINOUS DISTRIBUTION INTENSITY DATA(Continue 3)

Gamma\C	C300	C330	C360							
G0	977.4	979.75	1011.86							
G1	983.13	995.22	1024.58							
G2	985.33	1007.23	1032.43							
G3	983.91	1015.08	1036.51							
G4	979.44	1018.53	1036.27							
G5	971.83	1018.93	1031.09							
G6	961.78	1014.14	1021.67							
G7	947.1	1004.8	1007.7							
G8	929.04	991.76	990.04							
G9	907.46	975.75	968.92							
G10	882.41	956.6	944.74							
G11	853.21	933.99	917.35							
G12	821.89	907.14	888.3							
G13	787.43	878.88	857.37							
G14	751.56	846.54	825.19							
G15	714.66	812.47	789.0							
G16	676.82	775.81	752.34							
G17	637.81	738.52	714.66							
G18	600.13	701.63	678.08							
G19	561.59	664.81	640.32							
G20	524.14	626.74	603.03							
G21	488.5	589.14	565.51							
G22	452.86	553.03	528.22							
G23	415.89	516.21	489.99							
G24	381.43	477.98	452.86							
G25	348.62	442.11	415.89							
G26	317.22	406.47	380.41							
G27	287.94	372.4	345.4							
G28	260.23	340.3	311.17							
G29	233.61	309.37	279.38							
G30	210.06	279.77	250.81							
G31	187.38	250.65	223.02							
G32	166.58	223.96	198.21							
G33	147.66	198.76	175.76							
G34	130.94	179.69	155.12							
G35	115.16	155.59	136.35							
G36	100.95	136.59	119.95							

C Range: 0 - 360 Deg

C Interval: 30.0 Deg

Test Speed: High

Temperature:

Operators:

Test Date: 2022-06-28 16:50:45

G Range: 0 - 90 Deg

G Interval: 1.0 Deg

Test System: Huipu CPM-1800B Goniophotometer

Humidity:

Test Distance: 8.86 m

Remarks:

Report No.:

Test Time: 2022-06-28 16:50:45

LUMINOUS DISTRIBUTION INTENSITY DATA(Continue 4)

Gamma\C	C300	C330	C360							
G37	88.78	120.58	104.95							
G38	77.87	106.21	92.08							
G39	68.22	93.26	80.46							
G40	59.82	82.11	70.34							
G41	52.28	72.14	61.39							
G42	46.08	63.51	53.85							
G43	40.51	56.05	47.34							
G44	35.64	49.14	41.45							
G45	31.24	43.17	36.58							
G46	27.4	38.07	32.26							
G47	24.02	33.95	28.42							
G48	21.27	29.83	25.2							
G49	19.0	26.38	22.14							
G50	16.8	23.55	19.47							
G51	14.91	21.19	17.27							
G52	13.27	18.68	15.46							
G53	11.93	16.72	13.97							
G54	10.75	14.84	12.17							
G55	9.66	13.27	10.99							
G56	8.56	12.01	9.81							
G57	7.69	10.83	8.87							
G58	7.14	9.73	7.93							
G59	6.2	8.71	7.22							
G60	5.57	8.01	6.44							
G61	5.02	7.3	5.81							
G62	4.71	6.59	5.1							
G63	4.08	6.04	4.87							
G64	3.77	5.34	4.24							
G65	3.22	4.95	3.77							
G66	2.9	4.55	3.45							
G67	2.59	4.08	3.06							
G68	2.51	3.77	2.75							
G69	2.35	3.77	2.51							
G70	2.2	2.98	2.43							
G71	1.65	2.75	2.35							
G72	1.49	2.59	2.04							
G73	1.41	2.51	1.65							

C Range: 0 - 360 Deg

C Interval: 30.0 Deg

Test Speed: High

Temperature:

Operators:

Test Date: 2022-06-28 16:50:45

G Range: 0 - 90 Deg

G Interval: 1.0 Deg

Test System: Huipu CPM-1800B Goniophotometer

Humidity:

Test Distance: 8.86 m

Remarks:

LUMINOUS DISTRIBUTION INTENSITY DATA(Continue 5)

[illegible]

C Range: 0 - 360 Deg
C Interval: 30.0 Deg
Test Speed: High
Temperature:
Operators:
Test Date: 2022-06-28 16:50:45

G Range: 0 - 90 Deg
G Interval: 1.0 Deg
Test System: Huipu CPM-1800B Goniophotometer
Humidity:
Test Distance: 8.86 m
Remarks: