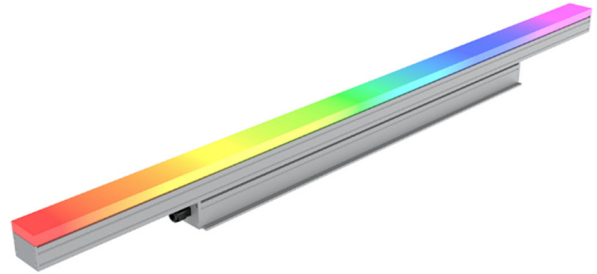
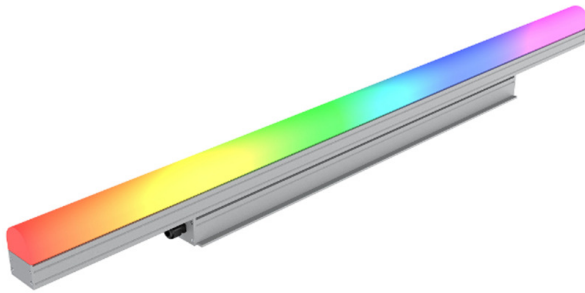




ANCHOR COVE WALL WASHER

TERRAIN SERIES



The Anchor Wall Wash Linear is versatile outdoor lighting fixture that combines efficiency and aesthetics, illuminating outdoor space with precision while enhancing architectural features and creating captivating wall wash effects. Its durable construction and weather resistance make it suitable for range of applications, from building facades and landscape to walkways and plazas, providing a versatile light solution for transforming outdoor environment into visually stunning space.

FEATURES

- Multiple lengths available
- Powder coated aluminum body
- 8 watt per foot
- UL listed
- Universal Voltage
- 5 Year warranty

SPECIFICATIONS

Color Temperature	RGB+1800K, 2700K, 3000K, 4000K, 6500K	Surface Finishing	Power Coat
Length	1FT, 2FT, 3FT, 4FT	CRI	85
Optics	Round Lens(145°)/Flat Lens(120°)	Delivered Output	200LM/FT
Power Consumption	8W/FT	Storage Temperature	-30°C to 60°C
Dimming	RDM/DMX	Operating Temperature	-10°C to 50°C
Housing Material	6063 high density extruded aluminum alloy	Ingress Protection Rating	IP66
Input Voltage	120-277V	Certification	UL





ANCHOR COVE WALL WASHER

TERRAIN SERIES

ORDERING GUIDE

ARKC- _____ - _____ - UNV - _____ - _____ - _____ *Example: ARKC-1-18-UNV-RDM-FLAT-BK*

Model	Length	Lumens	CCT	Voltage	Dimming	Optics	Finish
ARKC	1 1FT	200LM	18K 1800K	UNV 120-277V	RDM RDM DMX DMX	Flat 120° Round 145°	BK Black
	2 2FT	400LM	27K 2700K				WT White
	3 3FT	600LM	30K 3000K				GY Grey
	4 4FT	800LM	40K 4000K				
			65K 6500K				

**This is made to order item, please contact for lead time*

OPTICS AND MOUNTING ORDERING GUIDE

ARKC- _____ *Example: ARKC-MA*

Model	Description
ARKC-MA	180° Adjustable mounting
ARKC-MB	180° Adjustable mounting
ARKC-ML	180° Adjustable mounting (L shape)
ARKC-MSL	Adjustable landscape lighting mounting

**This is made to order item, please contact for lead time*

WIRING ACCESSORY ORDERING GUIDE

ARKC- _____ *Example: ARKC-PLDL-1*

Model	Description
ARKC-PLDL-1	Data Lead
ARKC-PLDL-6	Data Lead
ARKC-PLDL-20	Data Lead
ARKC-PLDL-50	Data Lead
ARKC-PEDL-1	Power and data combined extension 1 ft
ARKC-PEDL-2	Power and data combined extension 2 ft
ARKC-PEDL-6	Power and data combined extension 6 ft
ARKC-LJ-T	Leading T-Joint
ARKC-SI	Signal Injector
ARKC-E	End Cap

**This is made to order item, please contact for lead time*



ANCHOR COVE WALL WASHER

TERRAIN SERIES

CABLE CONDUCTOR SPECIFICATIONS

The core in the power and data cable are colored according to the following table:

Cable	Function	Core (US)	Core (EU)	Wire Size
Power lead in/ Power extension Cable	L (live)	Black	Brown	16AWG
	N (Netural)	White	Blue	16AWG
	GND (Earth)	Green	Yellow/Green	16AWG
Data lead in	DIM+	Purple	Purple	22AWG
	DIM-	Gray	Gray	22AWG
	DMX GND	Yellow	Yellow	22AWG
Power and Data lead in/ Power data extension cable	L (live)	Black	Brown	16AWG
	N (Netural)	White	Blue	16AWG
	GND (Earth)	Green	Yellow/Green	16AWG
	DIM+	Purple	Purple	22AWG
	DIM-	Gray	Gray	22AWG
	DMX GND	Yellow	Yellow	22AWG

The maximum number of connected fixtures in a daisy chain (Power):

Power/ft	Region	Main Voltage	Cable Max. power	Max. no. of 4ft fixtures can be clusted
6.5W	US	120V	1020W	39 nos.

The maximum number of connected fixtures in a daisy chain (Signal):

Pixel/4ft	Pixel Distance	No. of Channels	Protocol	Max. no. of 4ft fixtures can be clusted
1 Pixel	Per Fixture	4 Channels	DMX512	39 nos.
1 Pixel	100mm	48 Channels		10 nos.
1 Pixel	50mm	96 Channels		5 nos.



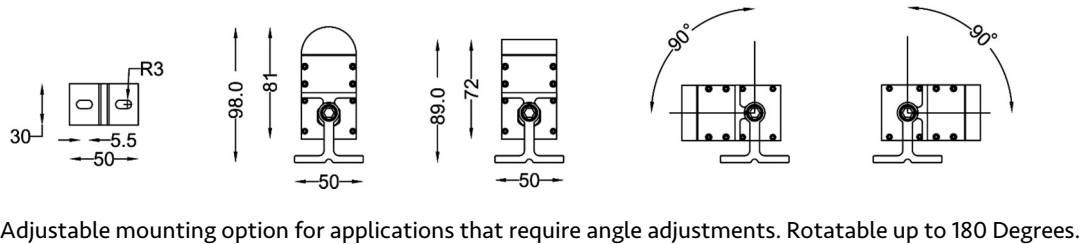
ANCHOR COVE WALL WASHER

TERRAIN SERIES

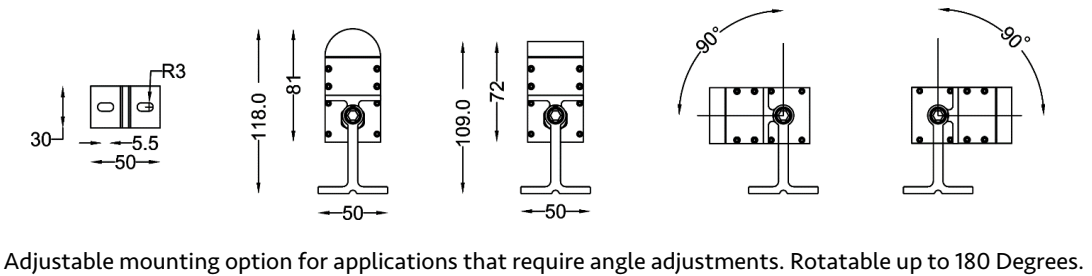
MOUNTING ACCESSORIES



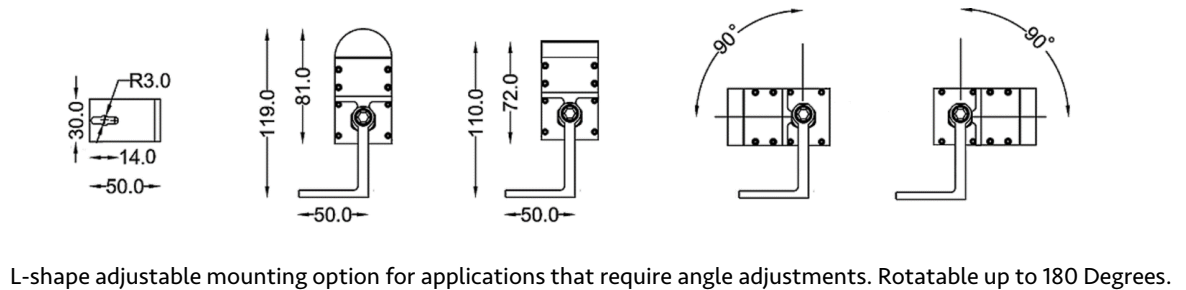
ARKC-MA



ARKC-MB

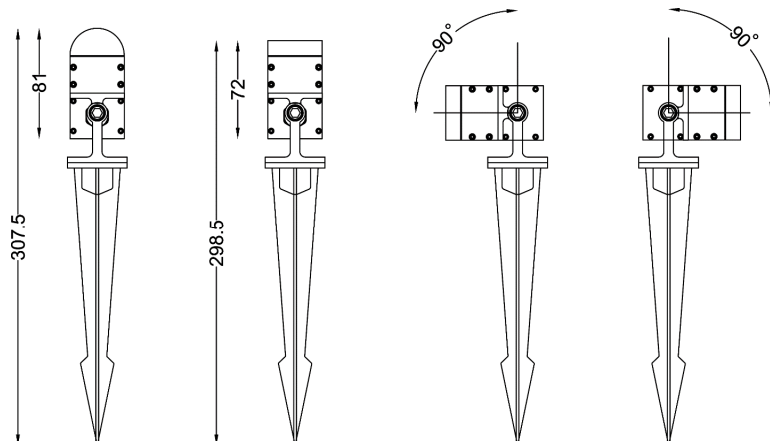


ARKC-ML



ARKC-MSL

Adjustable mounting option for landscape lighting application



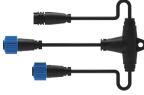






ARKC ANCHOR COVE WALL WASHER

TERRAIN SERIES

CONNECTING ACCESSORIES

Product Image	Model	Length	Description	Cable End		Conductor Size
	ARKC-PLDL-1	11.8	Power Combined Data Lead (0-10V, DALI)	Female	Bare Wire	3x16AWG + 3x22AWG
	ARKC-PLDL-6	78.7				
	ARKC-PLDL-20	236.2				
	ARKC-PLDL-50	590.5				
	ARKC-PEDL-1	11.8	Power and Data Combined extension (0-10V, DALI)	Female	Male	3x16AWG + 3x22AWG
	ARKC-PEDL-2	23.6				
	ARKC-PEDL-6	71				
	ARKC-LJ-T		Leading T-Joint (0-10V, DALI)			
	ARKC-SI		Signal Injector			
	ARKC-E		End Cap			