



redefine brilliance

Fall 2023

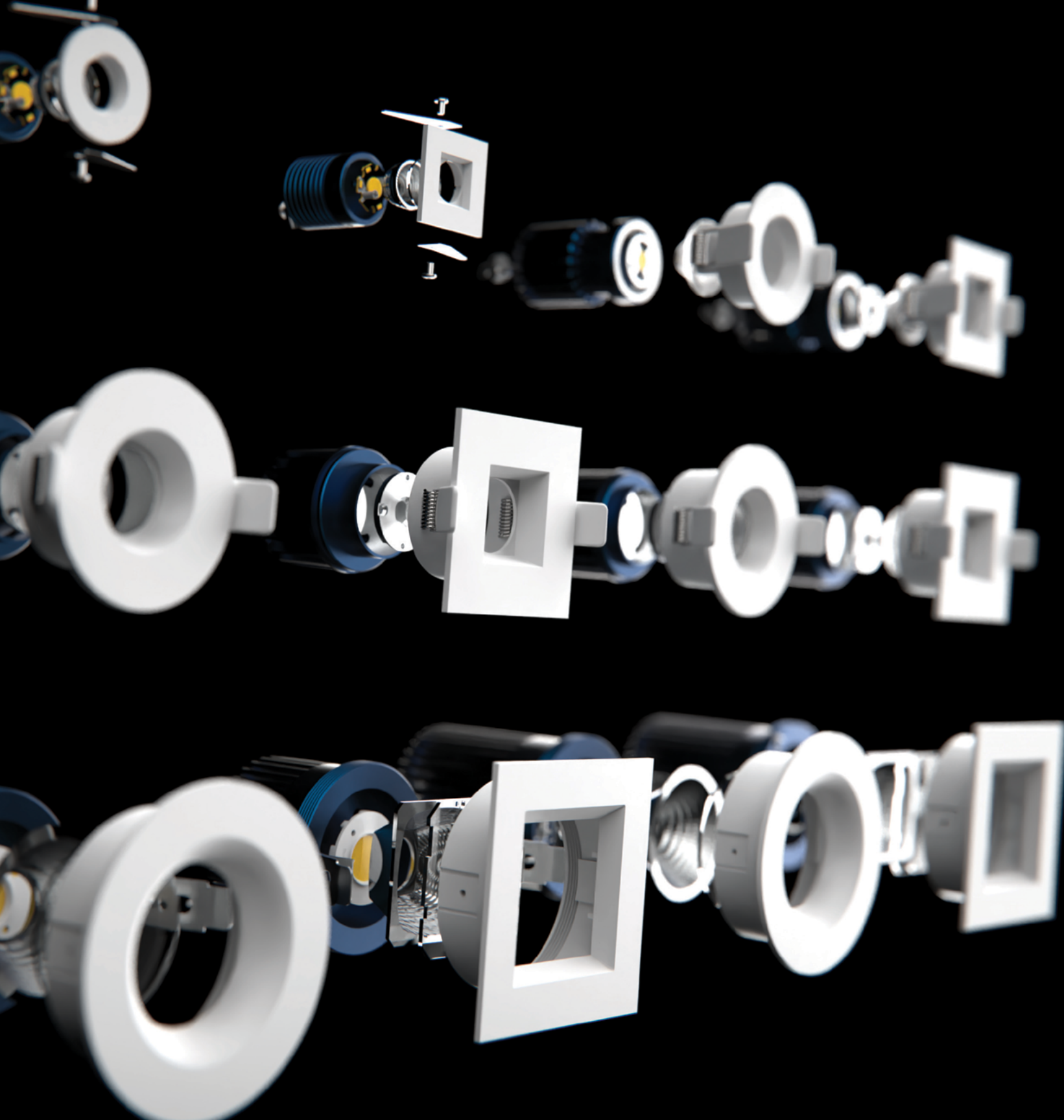


# ABOUT US

---

At Rayhil, we are endlessly devoted to finding innovative ways to light up the world. Since 2018, our team has found countless techniques to blend technology and design in order to create functional and energy-efficient lighting solutions. Above all else, our products are designed with quality in mind because illumination should feel effortless—like flipping on a switch. Our engineers are focused on simplifying technology to provide lighting solutions that last longer and perform better across every metric from longevity to energy-efficiency. Rising energy costs and a desire to live more sustainably are shaping the

lighting industry, for the better. Energy efficient performance is where Rayhil's design team shines, producing low energy consumption solutions. The Rayhil brand provides what customers need today by focusing on what is needed for tomorrow. We invest in research and development to position our brand as a leader in the residential and commercial lighting markets, adapting to changes driven by government regulations, energy markets, and consumer needs. From the Assembly Line to the Light Switch, Rayhil provides an unmatched experience by redefining what it means to illuminate



# CONTENT

---

**06** SONIC DOWNLIGHTS

**24** PARKLINE OVERBED

**28** REVOLVE CYCLINDER

**32** STRIKE ARCHITECTURAL  
STRIP LIGHT

**36** ROVE LINEAR

**40** METRO LINEAR

**44** LEXLINE LINEAR

**48** RIB LUMINARY

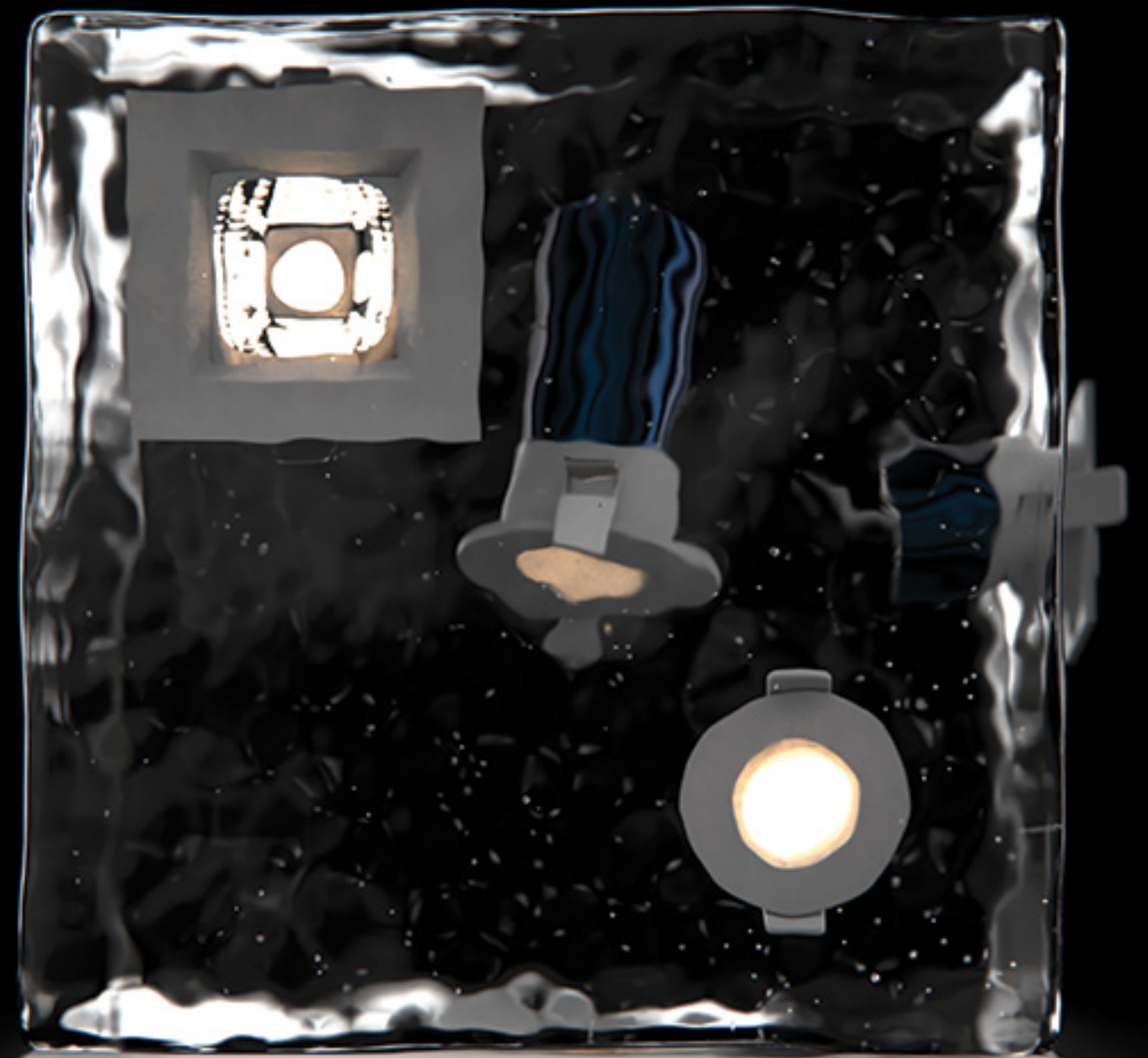
**52** ANCHOR WALL WASHER

**60** QUE TRACK SYSTEM



# 06 SONIC DOWNLIGHT

The Rayhil Sonic Downlights boast an exceptional 90+ CRI light while simultaneously reaching substantial lumen counts on each model. The sleek design of the Downlights are just as practical as they are appealing. Air-tight and wet location approved, as well as Type IC rated – approved for direct contact with insulation. They are also equipped with an Isolated driver inside a junction box. Available in multiple color temperatures, trim colors and shapes, as well as sizes.





15 Degree  
2700K

25 Degree  
3000K

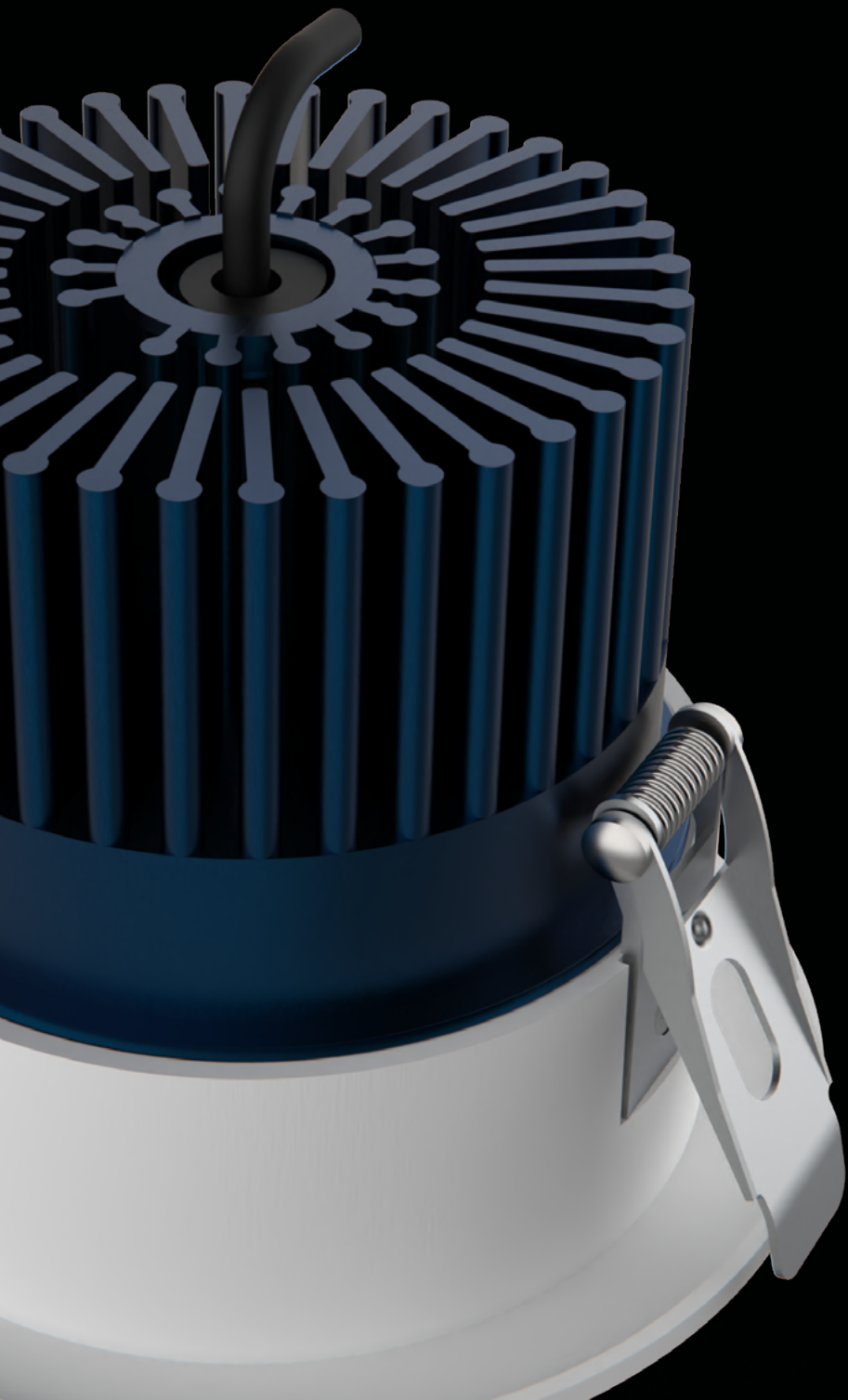
36 Degree  
3500K

50 Degree  
4000K

## Beam Angle

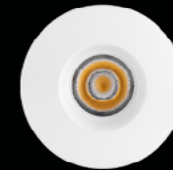
Immerse your space in the perfect light with our versatile downlights featuring a range of beam angles. Tailor the illumination to your specific needs with options including narrow, medium, and wide beam angles. Whether you desire focused accent lighting to highlight artwork or a broad wash of light to brighten up a room, our downlights offer exceptional flexibility. Transform your environment with precision and control, ensuring every corner is bathed in the ideal distribution of light. Discover the power to shape your space with our downlights' customizable beam angles.





# SONIC

## 1.5 RECESSED DOWNLIGHT



### RAD15R-7

ROUND  
7W  
600LM  
2.5" x 2.7"

#### ADDITIONAL INFO

- Input Voltage: 120V or 277V
- Color Temp.: 30K, 35K, 40K
- Cut Out: 2 inch
- Beam Angle: 36°



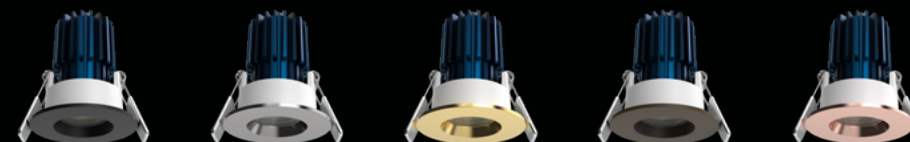
### RAD15S-7

SQUARE  
7W  
600LM  
2.5" x 2.7"

#### ACCESSORIES

- Trim Color: White, Black, Brushed Nickel, Gold, Bronze, Copper
- New construction plate available (NCH150)
- Optional Emergency Backup RAD15-EM

#### TRIM COLOR



# SONIC

## 2.5 RECESSED DOWNLIGHT



RAD25R-9-CCT

ROUND  
9W  
800LM  
3" x 3.15"



RAD25S-9-CCT

SQUARE  
9W  
800LM  
3" x 3.15"



RAD25S-9-CCT

HIGHT LUMENS  
SQUARE  
14W  
1100LM  
4.87" x 3.15"



RAD25R-9-CCT

HIGHT LUMENS  
ROUND  
14W  
1100LM  
4.87" x 3.15"



RAD25TMS-R-9-CCT

ROUND  
9W  
800LM  
3.94" x 2.81"



RAD25TMS-S-9-CCT

SQUARE  
9W  
800LM  
3.94" x 3.04"



RAD25TMS-S-14-CCT

SQUARE  
14W  
1100LM  
3.94" x 4.85"



RAD25TMS-R-14-CCT

BASE  
14W  
1100LM  
3.94" x 4.62"

### ADDITIONAL INFO

- Input Voltage: 120V or 277V
- CCT: 27K, 30K, 35K, 40K, 50K (CCT ADJ.)
- Cut Out: 2.36 inch
- Beam Angle: 15° / 24° / 38°

### ACCESSORIES

- Trim Color: White, Black, Brushed Nickel, Gold, Bronze. Copper
- \*NOT AVAILABLE FOR TRIMLESS OPTION
- New Construction Plate available (NCH250)
- Optional Emergency Backup RAD25/35-EM

### TRIM COLOR





# SONIC

## 3.5 RECESSED DOWNLIGHT



**RAD35R-15-CCT**

ROUND  
15W  
1250LM  
3.75" x 4.40"

**ADDITIONAL INFO**

- Input Voltage: 120V or 277V
- CCT: 27K, 30K, 35K, 40K, 50K (CCT ADJ.)
- Cut Out: 3.5 inch
- Beam Angle: 24° / 36° / 50°

**TRIM COLOR**



**RAD35S-15-CCT**

SQUARE  
15W  
1250LM  
3.75" x 4.40"

**ACCESSORIES**

- Trim Color: White, Black, Brushed Nickel, Gold, Bronze, Copper
- New construction plate available (NCH350)
- Optional Emergency Backup RAD25/35-EM



**RAD35R-12G-CCT**

GIMBAL  
ROUND  
12W  
850LM  
4" x 3"

**ADDITIONAL INFO**

- Input Voltage: 120V or 277V
- CCT: 30K, 35K, 40K (CCT ADJ.)
- Cut Out: 3.5 inch
- Beam Angle: 15° / 24° / 42° / 55°

**ACCESSORIES**

- Trim Color: White, Black
- New construction plate available (NCH350)
- Optional Emergency Backup RAD25/35-EM



**RAD35S-15-CCT**

TRIMLESS  
SQUARE  
15W  
1250LM

**ADDITIONAL INFO**

- Input Voltage: 120V or 277V
- CCT: 20K, 30K, 35K, 40K, 50K (CCT ADJ.)
- Cut Out: 3.74 inch
- Beam Angle: 24° / 36° / 50°

**ACCESSORIES**

- New construction plate available (NCH350)
- Optional Emergency Backup RAD25/35-EM

# SONIC X

## RECESSED DOWNLIGHT

Our most powerful Downlight yet, the Sonic X 3.5, offers 2000lm of light with only 23W of energy consumption. This powerhouse exceeds all expectations with its illumination ability without compromising its sleek and compact size. As with all Sonic Downlight Series products, this model features an aluminum body, an anodized heat sink, and a galvanized steel trim. This solid design ensures the Sonic X 3.5 can offer premium lighting and durability in various settings, including wet locations or unusual ceiling heights. Furthermore, this fixture is available in two shapes, square and round, as well as numerous trim colors to meet your interior design needs.



### SONIC X RAD35R-23-CCT

ROUND  
23W  
2000LM  
4.37" x 4.72"

#### ADDITIONAL INFO

- Input Voltage: 110V or 277V
- CCT: 27K, 30K, 35K, 40K, 50K (CCT ADJ.)
- Cut Out: 3.5 inch
- Beam Angle: 24° / 36° / 50°

#### TRIM COLOR



### SONIC X RAD35S-23-CCT

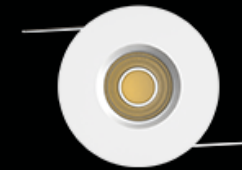
SQUARE  
23W  
2000LM  
4.13" x 4.72"

#### ACCESSORIES

- Trim Color: White, Black, Brushed Nickel, Gold, Bronze, Copper
- New construction plate available (NCH350)
- Optional Emergency Backup RAD25/35-EM

# SONIC 1.0 MINI

The Sonic Mini 1.0 Downlights combine functionality, strength and appeal into a one inch compact fixture. Ideal for inside cabinets, display cases, and other decorative positions. Each Mini Downlight delivers 400 lumens and 90+ CRI light. An extruded aluminum heat sink ensures optimal heat dissipation and LED life. Multiple color temperatures and shape options available, and suitable for wet locations.



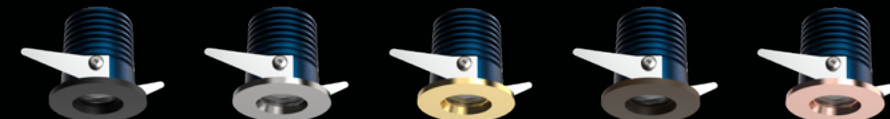
## RAD10R-5

ROUND  
5W  
400LM  
1.57" x 1.72"

### ADDITIONAL INFO

- Input Voltage: 24V
- CCT: 30K, 35K, 40K
- Cut Out: 1.33 inches
- Beam Angle: 60°
- Non Dimmable

### TRIM COLOR



## RAD10S-5

SQUARE  
5W  
400LM  
1.57" x 1.72"

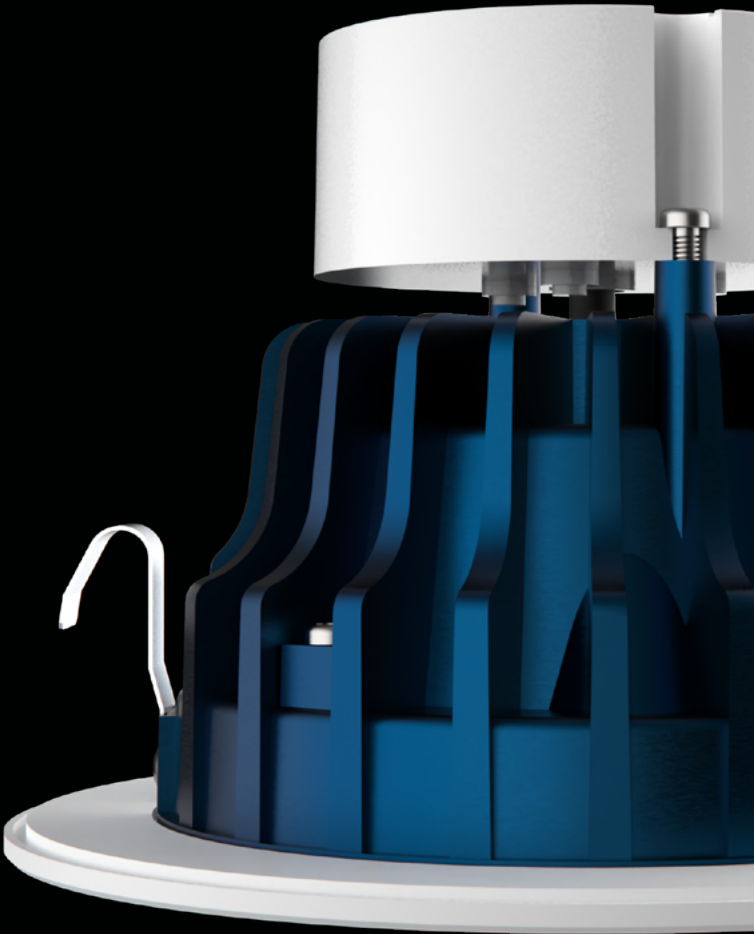
### ACCESSORIES

- Trim Color: White, Black, Brushed Nickel, Gold, Bronze, Copper
- Drivers: LB55504, LB55450, LB55451, LB55452



# SONIC RETROFIT DOWNLIGHT

The Rayhil Sonic Retrofits were crafted with innovative efficiency and aesthetic perfectionism. The versatility of the E26 and MR16 base options, plus the multiple color temperatures, trim colors and shapes, as well as sizes, make the Retrofit Series achieve your lighting desires with ease. Each Retrofit displays exceptional 90+ CRI light while delivering over 75 lumens per watt. Compatible with both 4" New construction and 4" Remodel Housings. In addition, the Retrofits are suitable for wet location.



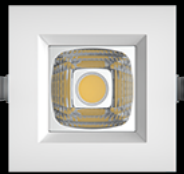
## RAR40R-10-CCT

ROUND  
10W  
1000LM  
4.94" x 3.375"  
E26 BASE



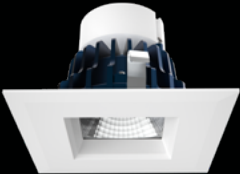
## RAR40R-10-CCT-MR16

ROUND  
10W  
1000LM  
4.94" x 3.375"  
MR16 BASE



## RAR40S-10-CCT

SQUARE  
10W  
1000LM  
4.94" x 3.375"  
E26 BASE



## RAR40S-10-CCT-MR16

SQUARE  
10W  
1000LM  
4.94" x 3.375"  
MR16 BASE

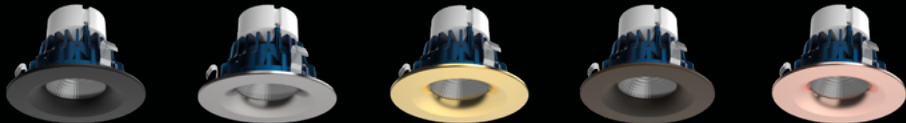
### ADDITIONAL INFO

- Input Voltage: 120V or 12V
- CCT: 30K, 35K, 40K (CCT ADJ.)
- Beam Angle: 24° / 36° / 50°

### ACCESSORIES

- Trim Color: White, Black, Brushed Nickel, Gold, Bronze, Copper

### TRIM COLOR



# SONIC MULTIPLE

The Rayhil Sonic Multiple Series cultivates a fresh unique look that defines any commercial or residential space. The flawless engineering of the extruded aluminum heat sink ensures optimal heat dissipation and LED life. The Multiple Head Downlights are Type IC rated – approved for direct contact with insulation and have an isolated driver inside a junction box. Additionally, they are air-tight and wet location approved. The gimbal can rotate 360 degrees horizontally and tilt 30 degrees. Available in both 2-Head and 3-Head as well as multiple color temperature and trim options.



## RAD-2H-12

2 HEAD  
12W x 2  
1750LM  
8" x 4.25" x 4"

### ADDITIONAL INFO

- Input Voltage: 120V or 277V
- CCT: 27K, 30K, 35K, 40K, 50K (CCT ADJ.)
- Cut Out: 7 1/2" x 3 3/4"
- Beam Angle: 15° / 24° / 38°

### ACCESSORIES

- Trim Color: White, Black
- New construction plate available (NCH2H)



## RAD-3H-12

3 HEAD  
12W x 3  
2700LM  
11.5" x 4.25" x 4"

### ADDITIONAL INFO

- Input Voltage: 120V or 277V
- CCT: 27K, 30K, 35K, 40K, 50K (CCT ADJ.)
- Cut Out: 10 7/8" x 3 3/4"
- Beam Angle: 15° / 24° / 38°

### ACCESSORIES

- Trim Color: White, Black
- New construction plate available (NCH3H)

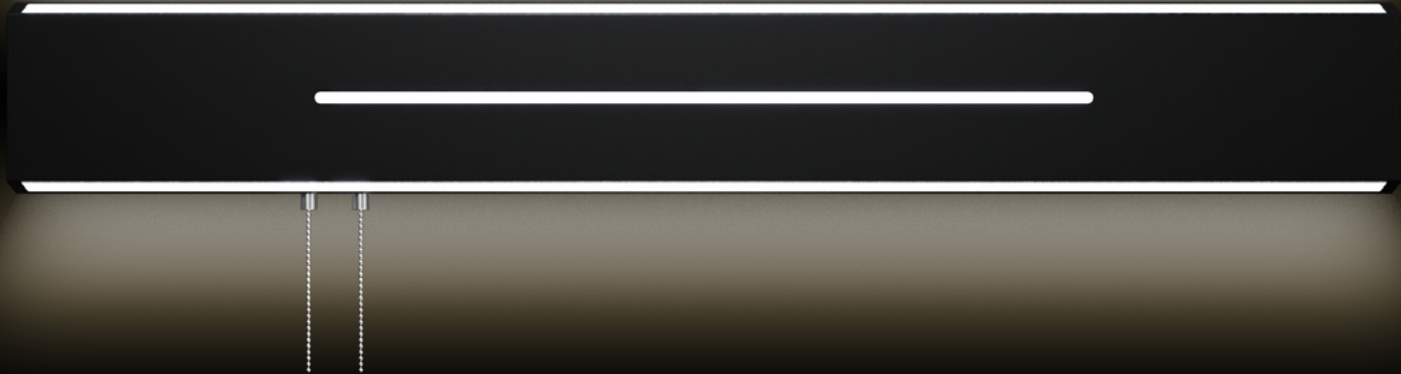
# 24 PARKLINE OVERBED

The Parkline Overbed Light was meticulously designed with the intention of providing the Hospitality Industry with a solution that would exceed any expectation. An equal combination of aesthetic and maximum performance harmoniously powers the Parkline. The 3 directional lights provide multiple options for illumination such as a Reading Light, Ambient Light and a Night Light which can function individually as well as in unison. Standard finish options include White, Brushed Nickel, Gold and Black. Custom finishes and lengths are available to meet the exact vision imagined. Field selectable Wattage and Color Temperature switches located behind the fixture grant the flexibility to add yet another customized feel to any room they are placed in.





# PARKLINE™



**POL-2-CCT**  
2 FT  
10W / 15W / 20W + 5W  
30K / 35K / 40K 3CCT Selectable

**POL-3-CCT**  
3 FT  
10W / 20W / 30W + 5W  
30K / 35K / 40K 3CCT Selectable

**POL-4-CCT**  
4 FT  
20W / 30W / 40W + 5W  
30K / 35K / 40K 3CCT Selectable

**STARTING OPTION**  
Pull Chain  
1 FT | 2 FT | 3 FT | Custom  
Left | Center | Right  
Wire | Wireless

**FINISHES**  
White | Black | Gold | Brushed Nickel  
Custom

## POWER COAT OPTIONS

- White
- Black
- Brushed Nickel
- Gold
- Custom

## WOOD OPTIONS

- Pine
- Maple
- Walnut

## FINISH OPTIONS

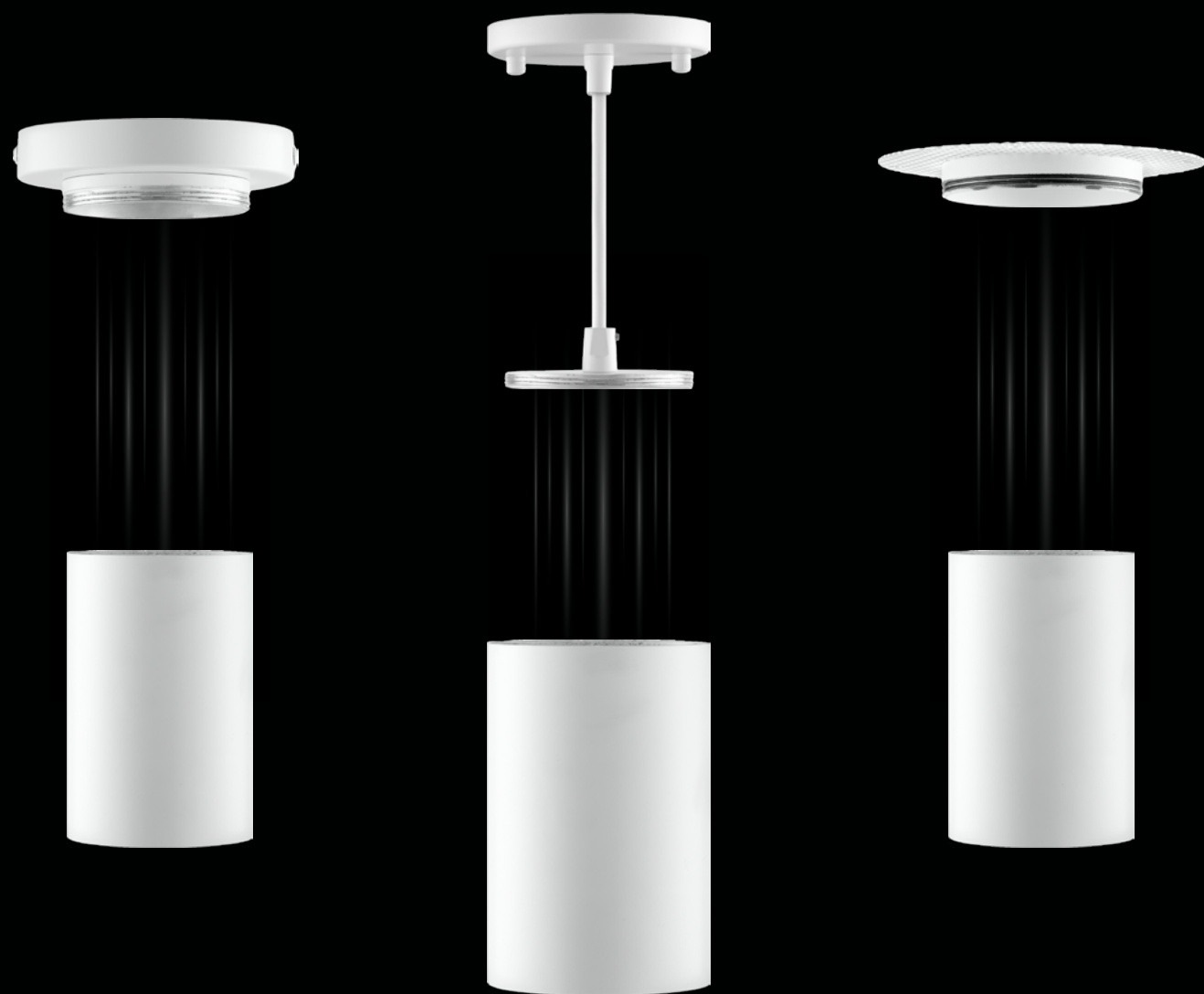
- Satin Clear Anodizing
- Machine Components

A black and white photograph of a modern lighting fixture. The fixture consists of a long, thin, vertical rod that connects a circular base at the bottom to a circular mounting plate at the top. The mounting plate has two small, cylindrical light fixtures attached to it. The background is a dark, solid color.

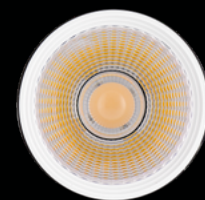
# 28 REVOLVE CYLINDER

The Revolve Cylinder Series provides a minimalistic lighting element to your space. The Black and White finish options allow you to match your fixture to your aesthetic. The interchangeable Mounting Kits ensure smooth installation and a versatile adaptation

---



# REVOLVE CYLINDER



## CYL-20-CCT

CYLINDER MODULE  
20W  
1800LM  
BLACK | WHITE

27K, 30K, 35K, 40K, 50K  
5 CCT Selectable  
120-277V  
0-10V & Triac Dimming



## CYL-SFC

SURFACE MOUNTING KIT  
BLACK | WHITE  
4.72" x 5.87"



## CYL-PDT

PENDANT MOUNTING KIT  
BLACK | WHITE  
3.72" x 4 FT ADJ.



## CYL-TMS

TRIMLESS MOUNTING KIT  
BLACK | WHITE  
5.20" x 0.12

BLACK FINISH AVAILABLE



EM BATTERY BACKUP OPTION





# 32 STRIKE ARCHITECTURAL STRIP LIGHT

The Strike series grants creative opportunities that are seldom seen in the Lighting industry. Each space can be uniquely transformed by these LED Linear Strips. Unlimited shapes and formations can be designed to ensure a timeless intrigue. The COB Strip technology creates a seamless and transitional light output, without any interruptions such as with standard LED Chips. Black and White finishes available.





# STRIKE

Inspire endless curiosity in your space

## STK

4.6W/FT  
412LM/FT  
Custom Length available up to 40FT

## Color Temperature

2700K  
3000K  
3500K  
4000K  
5000K

## FINISHES

Black  
White (Custom order)

## ADDITIONAL INFO

- Runs can not exceed 20 feet per home run
- Maximum driver distance of 20 feet before voltage drop (with 18 gage wire)
- Compatible with electronic driver only

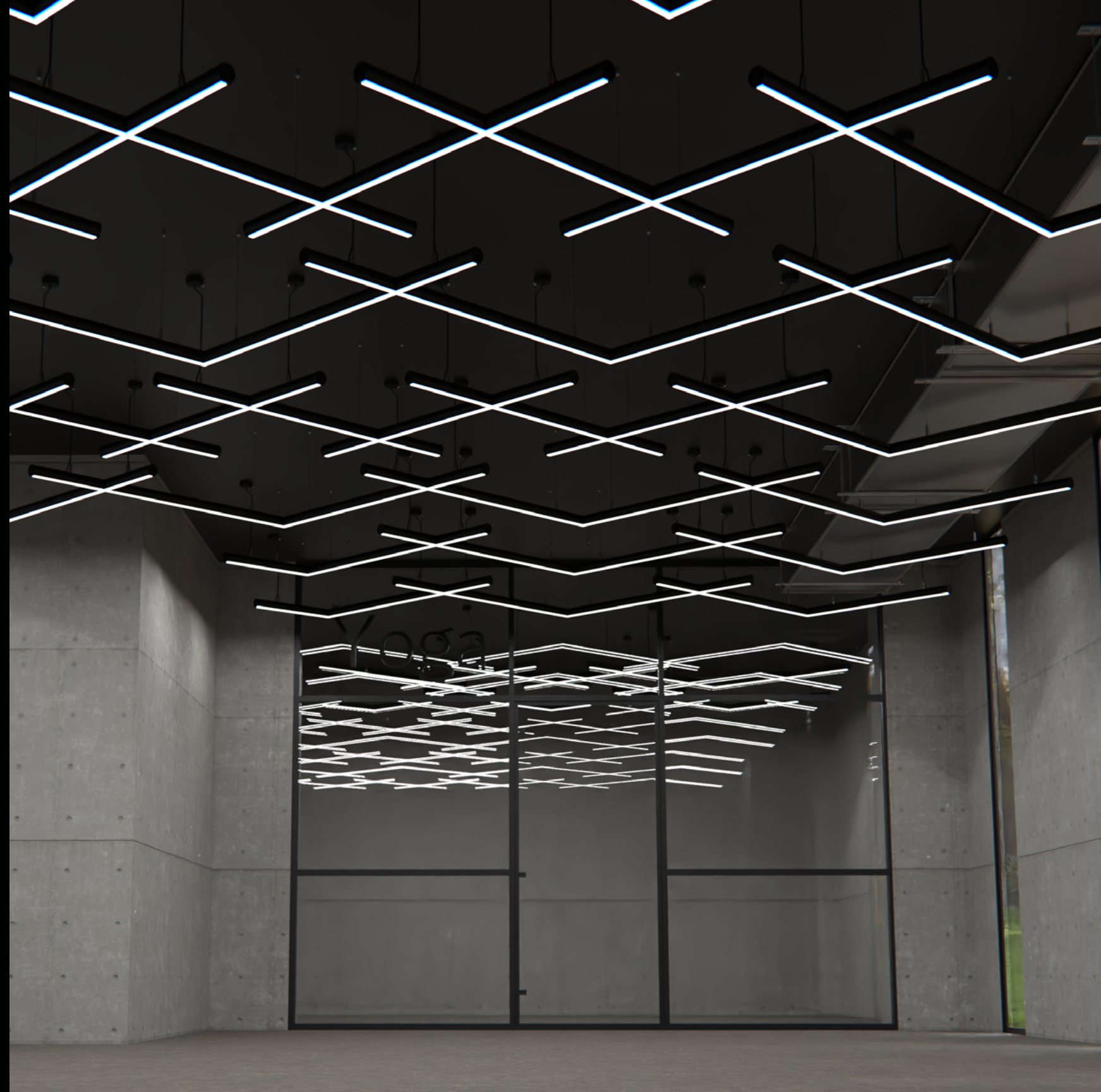
## ACCESSORIES

- Drivers:  
STK-96-DIM  
STK-120-DIM  
STK-200-DIM  
STK-300-DIM



# 36 ROVE LINEAR

The Rove Linear is a versatile lighting fixture that seamlessly blends form and function, making it the perfect addition to any space. Its sleek and minimalistic design allows it to complement any existing architectural elements, while also adding a touch of sophistication to the room.





# ROVE

## LINKABLE LINEAR

### RVE-2

2 FT  
25W | 2375LM  
30K / 40K / 60K  
24 x 1.65 x 1.62

### RVE-3

3 FT  
30W | 2850LM  
30K / 40K / 60K  
36 x 1.65 x 1.62

### RVE-4

4 FT  
34W | 3230LM  
30K / 40K / 60K  
48 x 1.65 x 1.62

### RVE-5

5 FT  
40W | 3800LM  
30K / 40K / 60K  
60 x 1.65 x 1.62



### LIGHT DIRECTION

Direct  
Direct/Indirect

### FINISHES

White | Black | Custom

### DRIVER

Non-Dimmable  
0-10V

### ACCESSORY TYPE

X  
T  
L

### ADDITIONAL INFO

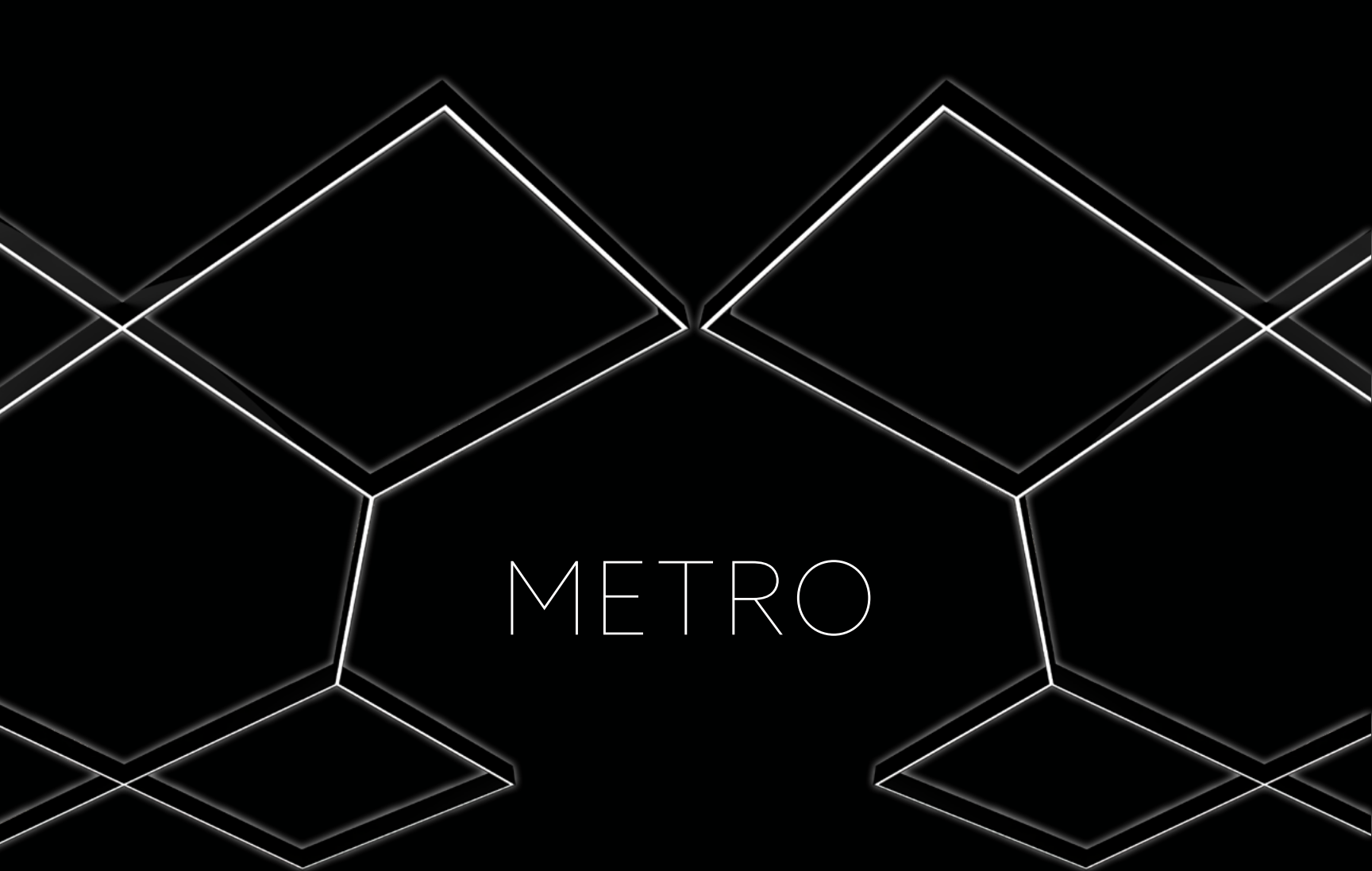
- 100-277V
- Max run 400W
- Adjustable Suspension up to 60 inches
- Internal Driver



# 40 METRO LINKABLE LINEAR

The Metro Linear is a versatile lighting fixture that seamlessly blends form and function, making it the perfect addition to any space. Its sleek and minimalistic design allows it to complement any existing architectural elements, while also adding a touch of sophistication to the room.





LIGHT DIRECTION

Direct  
Direct/Indirect

DRIVERS

100-277V (Non-Dimmable)  
0-10V

ACCESSORIES

L  
T  
V  
X  
Y

MTO-2

2FT  
25 Watts  
2125 Lumens  
30K, 40K, 60K  
24" x 0.78" x 3.70

MTO-3

3FT  
30 Watts  
2550 Lumens  
30K, 40K, 60K  
36" x 0.78" x 3.70

MTO-4

4FT  
34 Watts  
2125 Lumens  
30K, 40K, 60K  
48" x 0.78" x 3.70

MTO-5

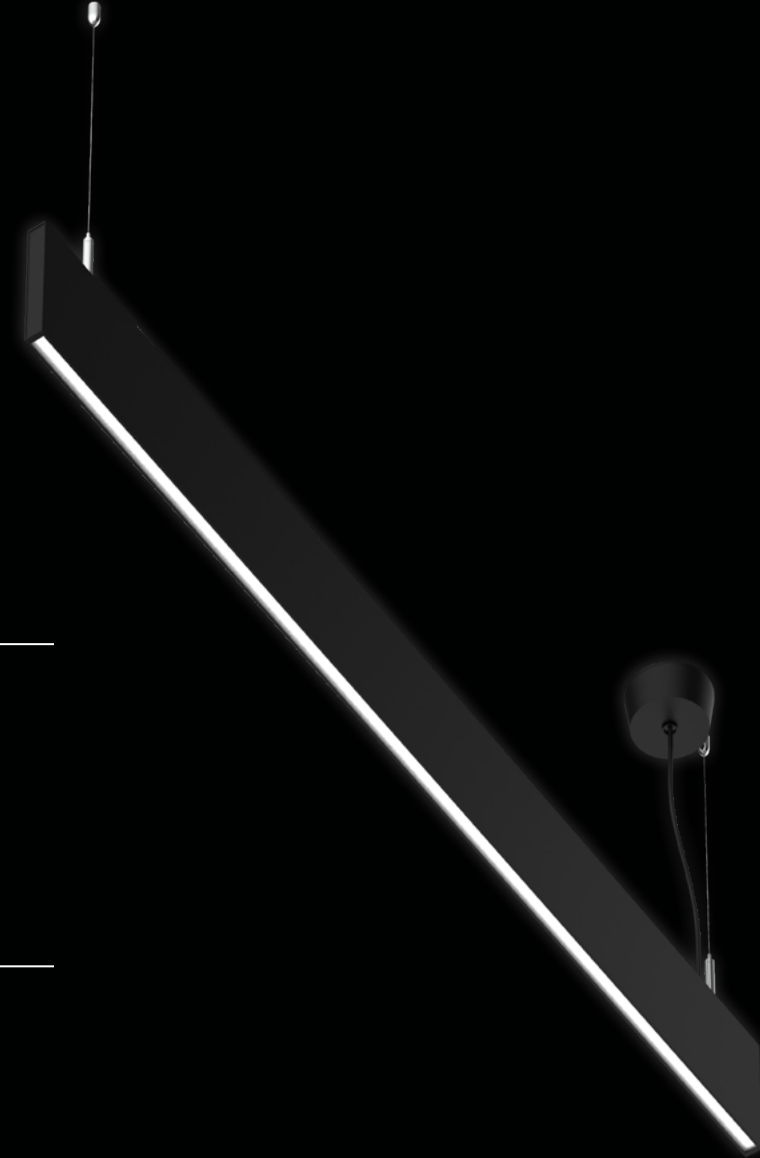
5FT  
25 Watts  
2125 Lumens  
30K, 40K, 60K  
60" x 0.78" x 3.70

FINISHES

Black  
White  
Brushed Nickel  
Custom

ADDITIONAL INFO

- 400W
- Adjustable Suspension up to 5ft

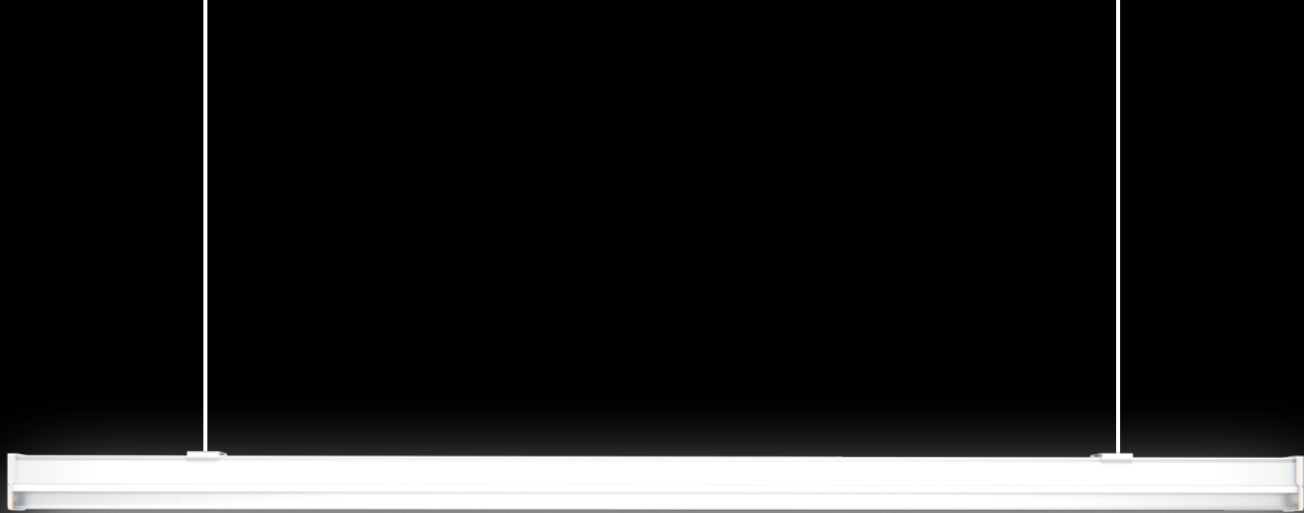




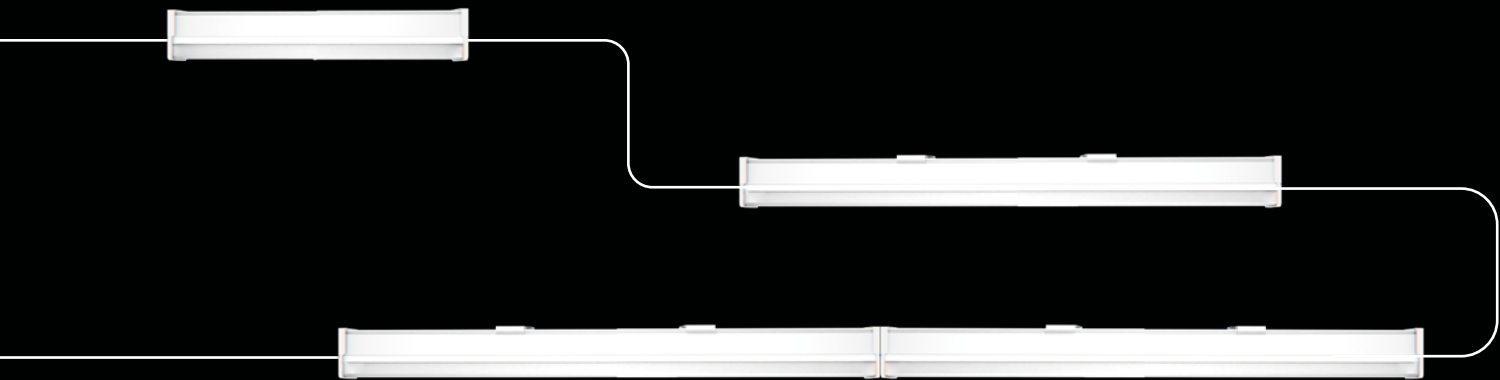
# 44 LEXLINE LINEAR

The minimalistic silhouette of the Lexline showcases the modern design that elevates the new generation of lighting. The sleek aluminum body is available in White, Brushed Nickel, and Black finishes so that you may choose whichever aesthetic fits your desire. Each Lexline can be linked to create a continuous line of seamless illumination. Options for Emergency battery Backup and Motion sensor configuration are available as well. The Lexline is ETL, CETL and Energy star approved, with a 5 year warranty.





# LEXLINE



## LEX

1FT | 10W | 1100LM  
2FT | 20W | 2000LM  
3FT | 30W | 2900LM  
4FT | 40W | 4400LM  
6FT | 60W | 5900LM  
8 FT | 80W | 8000LM

## COLOR TEMPERATURE

3000K  
4000K  
5000K  
CCT Adj.

## CONFIGURATION

Emergency Battery  
Motion Sensor  
EM+MS

## FINISHES

White | Black | Brush Nickel

## DRIVER

Non-Dimmable  
0-10

## APPLICATION

Surface  
Suspended

## ACCESSORIES

4 FT Suspension Wire  
Bridge Connector  
Power Cable  
Couplings Connectors



# 48 RIB LUMINARY

The Rib Luminary is a groundbreaking lighting solution that offers a distinct and minimalist alternative to traditional strip lighting. With its seamless linking capability, the Rib Luminary provides a sleek and continuous lighting effect that is both visually appealing and highly functional. Whether you prefer an AC or DC model, this innovative luminary is designed to cater to your specific needs and requirements. Its simplicity in design and installation makes it an ideal choice for various applications.





RIBDC

RIBDC

4IN | 1.3W | 91LM  
8IN | 2.7W | 189LM  
12IN | 4W | 280LM  
23IN | 8W | 560LM  
35IN | 12W | 840LM  
47IN | 16W | 1120LM  
59IN | 20W | 1400LM

ACCESSORIES

Right L  
Left L  
X  
Inner L  
Outer L  
T

COLOR TEMPERATURE

2700K  
3000K  
3500K  
4000K  
5000K

FINISHES

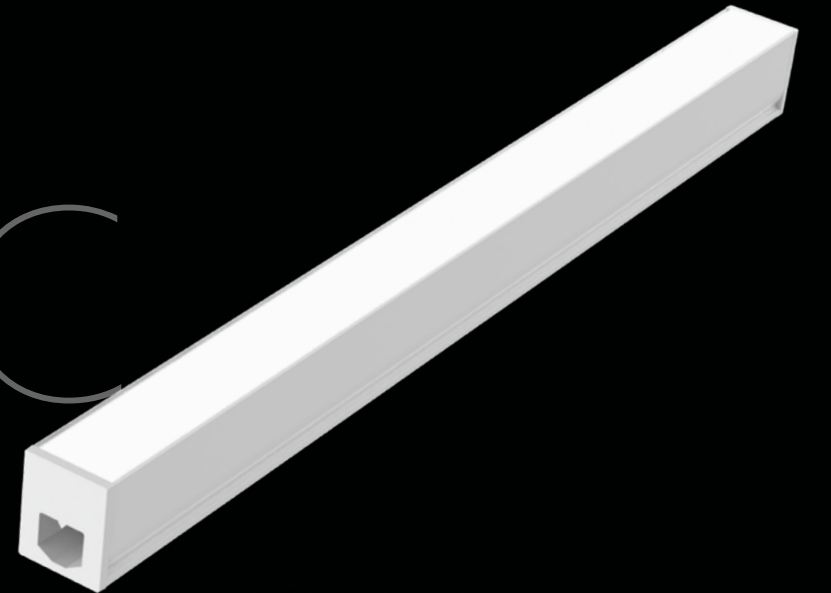
White  
Black  
Aluminum  
Gold

ADDITIONAL INFO

- Input Voltage: 24V
- Up to 16.4ft run
- Surface or Recessed mount
- Seamlessly linkable

WIRE ACCESSORIES

- Starter
- Coupling
- Splitter
- DC Jack Starter
- Motion Sensor
- In-line Dimmer



RIBAC

RIBAC

4IN | 1W | 70LM  
6IN | 1.5W | 110LM  
8IN | 2W | 140LM  
12IN | 3W | 210LM  
24IN | 6W | 420LM  
48IN | 12W | 840LM

ADDITIONAL INFO

- Input Voltage: 120V
- Up to 36.4ft run
- Seamlessly linkable
- Multiple mounting options

COLOR TEMPERATURE

2700K  
3000K  
3500K  
4000K  
5000K

FINISHES

White  
Black  
Aluminum  
Gold

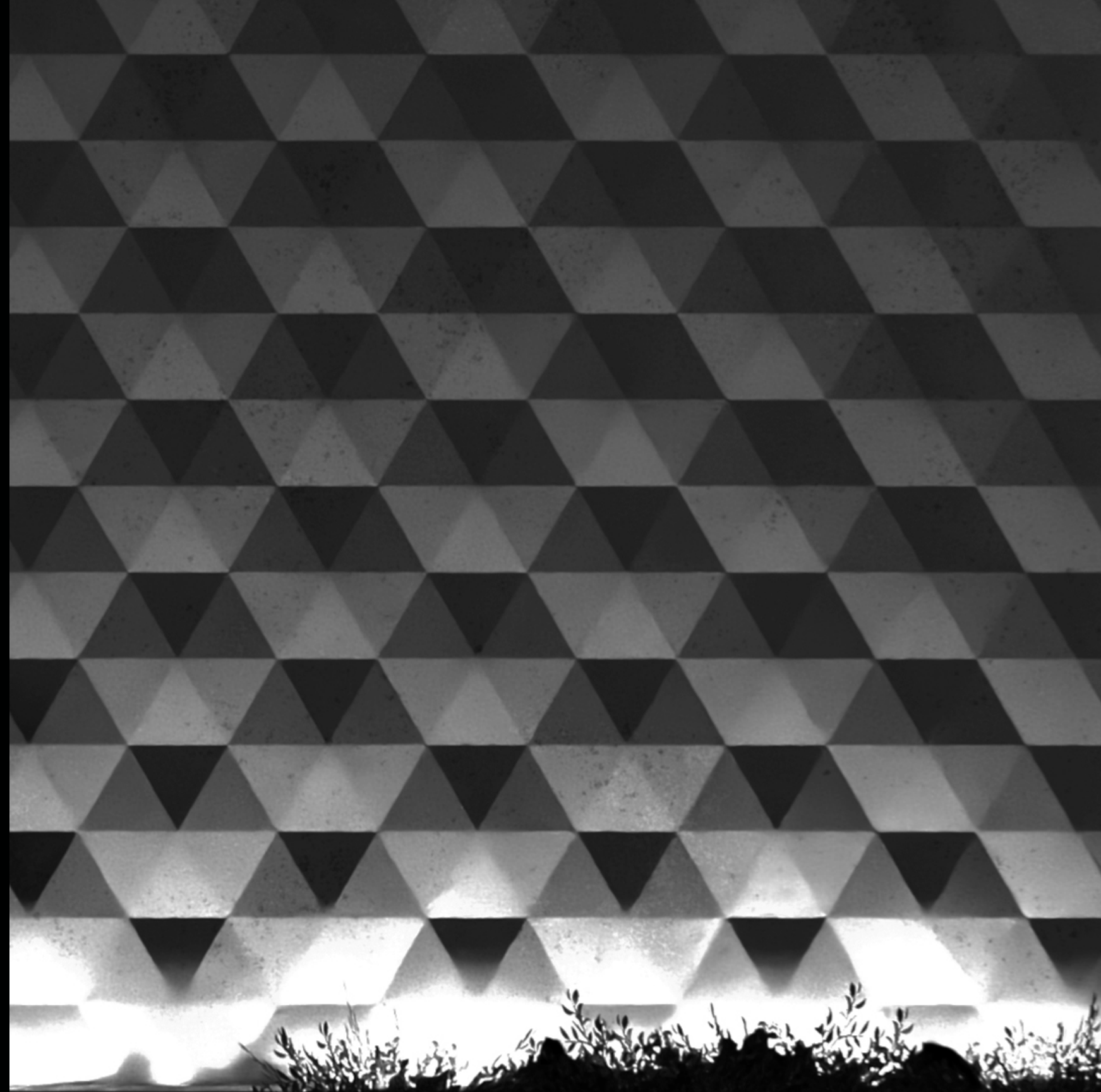
WIRE ACCESSORIES

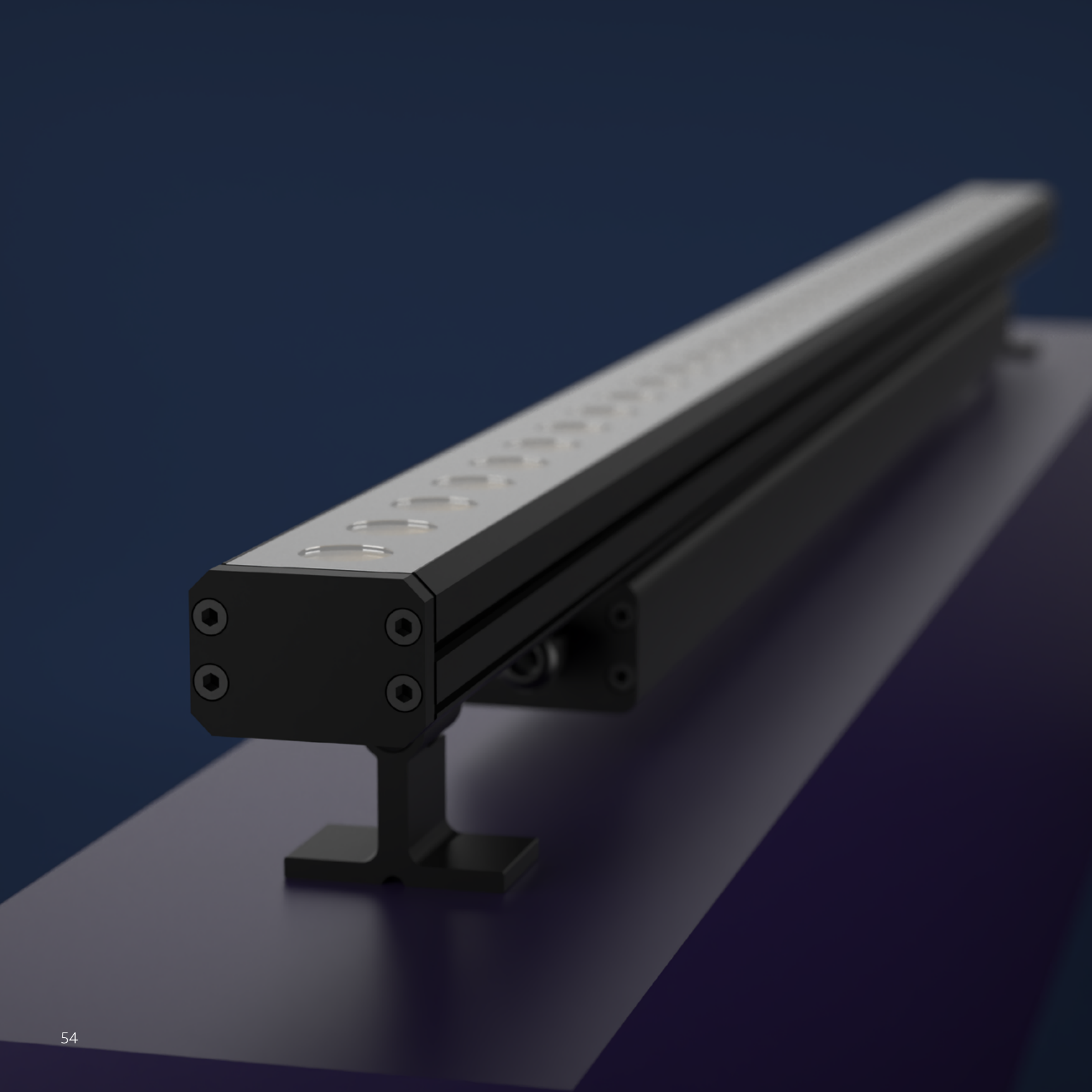
- Junction Box
- Wire Starter
- Power Plug Starter
- Coupling Connector
- Coupling Wire Connector



# 52 ANCHOR WALL WASHER

The Rib Luminary is a groundbreaking lighting solution that offers a distinct and minimalist alternative to traditional strip lighting. With its seamless linking capability, the Rib Luminary provides a sleek and continuous lighting effect that is both visually appealing and highly functional. Whether you prefer an AC or DC model, this innovative luminary is designed to cater to your specific needs and requirements. Its simplicity in design and installation makes it an ideal choice for various applications





ARK

1FT | 2FT | 3FT | 4FT  
9W/FT  
100LM/W

OPTICS

13 Degree  
25 Degree  
35 Degree  
50 Degree  
15 x 40 Wall Wash

COLOR TEMPERATURE

2700K  
3000K  
3500K  
4000K  
5000K  
6000K

ACCESSORIES



ARKRGBW

1FT | 2FT | 3FT | 4FT  
15W/FT  
50LM/W

OPTICS

13 Degree  
25 Degree  
35 Degree  
50 Degree  
20 x 50 Wall Wash

COLOR TEMPERATURE

RGB+3000K  
RGB+4000K  
RGB+6500K

CONTROLS

DMX  
RDM

FINISHES

Gray  
Black  
White

DIMMING

ON/OFF  
0-10V  
DALI

ADDITIONAL INFO

- IP66 Wet Location Rated
- Powder Coated Body
- Universal Voltage





#### ARKP

1FT | 2FT | 4FT  
12W/FT  
100LM/W

#### ADDITIONAL INFO

- IP66 Wet Location Rated
- Powder Coated Body
- Universal Voltage

#### COLOR TEMPERATURE

2700K  
3000K  
3500K  
4000K  
5000K  
6000K

#### BEAM ANGLE

13 Degree  
25 Degree  
35 Degree  
50 Degree  
15 x 40 Wall Wash

#### DIMMING

ON/OFF  
0-10V  
DALI

#### FINISHES

Gray  
Black  
White

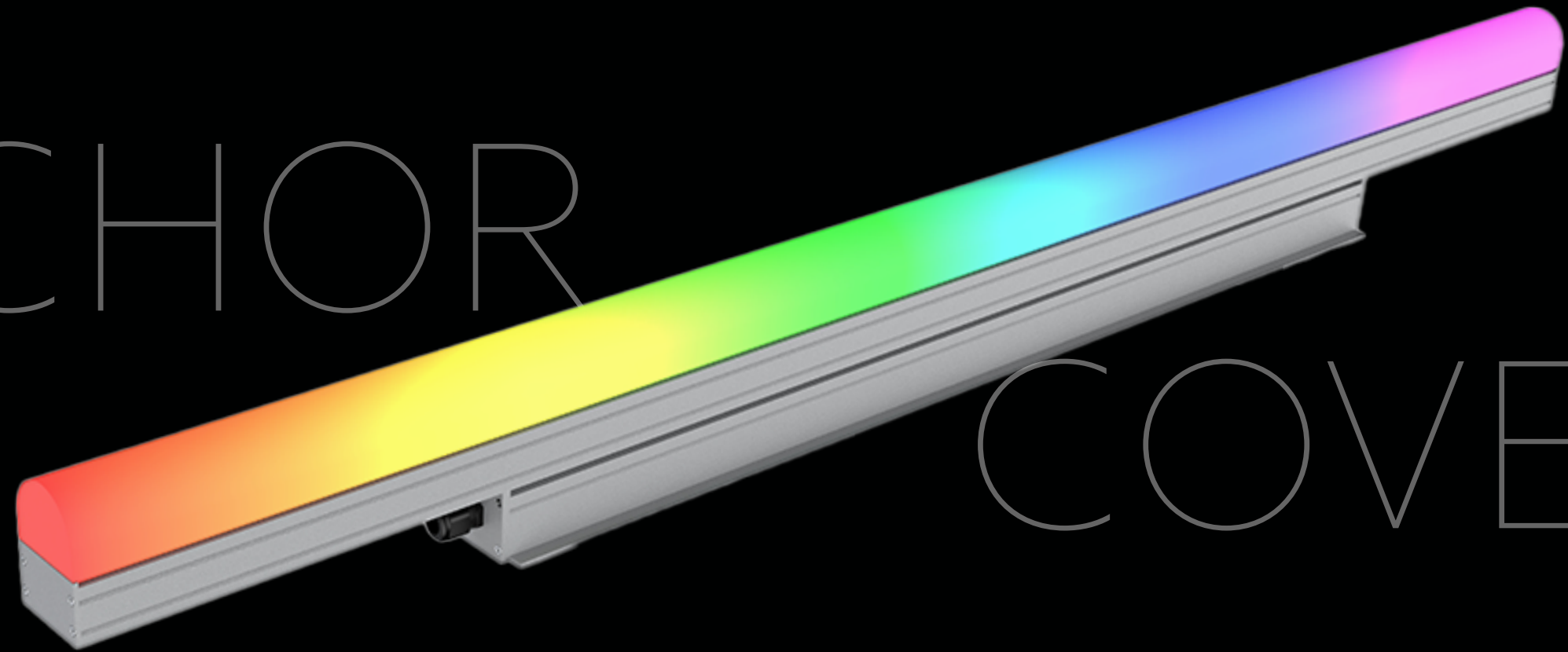
#### WIRE ACCESSORIES

Power Cable  
Coupling  
T Joint  
End Cap

#### ACCESSORIES



# ANCHOR



# COVE

## ARKP

1FT | 2FT | 3FT | 4FT  
8W/FT  
200LM/W

## COLOR TEMPERATURE

1800K  
2700K  
3000K  
4000K  
6500K

## BEAM ANGLE

Flat 120°  
Round 145°

## CONTROL

DMX  
RDM

## FINISHES

Gray  
Black  
White

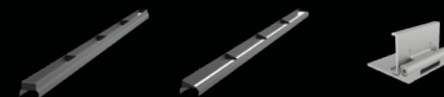
## WIRE ACCESSORIES

Power Cable  
Coupling  
T Joint  
End Cap

## ADDITIONAL INFO

- IP66 Wet Location Rated
- Powder Coated Body
- Universal Voltage

## ACCESSORIES

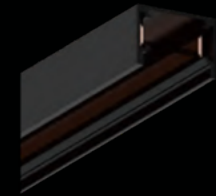


# 60 QUE TRACK SYSTEM

Experience the magnetic revolution in lighting with the Que Track Light System. Its ultra-slim profile seamlessly merges with any interior, while its versatile track applications and unlimited head options provide effortless customization. Highlight specific areas and set the perfect ambiance with precision. Illuminate your space like never before and embrace the future of lighting technology

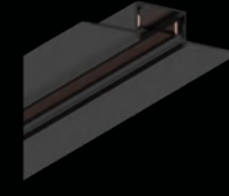


# QUE TRACKS



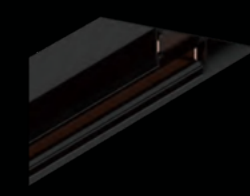
## QUE-SF

SURFACE  
6FT | 9FT  
BLACK | WHITE | CUSTOM



## QUE-TM

TRIMLESS-MUD-IN  
6FT | 9FT  
BLACK | WHITE | CUSTOM



## QUE-TN

TRIMLESS NON-MUD-IN  
6FT | 9FT  
BLACK | WHITE | CUSTOM



## QUE-P

PENDANT  
6FT | 9FT  
BLACK | WHITE | CUSTOM

### ACCESSORIES TYPE

- Starting Wire
- L Shape
- Inner L Shape
- Hard L Connector
- Flexible L Connector
- Hard Connector



### ADDITIONAL INFO

- 24V System
- Magnetic installation for light heads multiple lengths and application types unlimited finish options



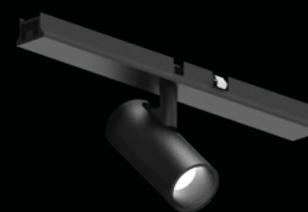


### QUE11

3W | 5W  
50LM/W  
BLACK | WHITE

#### ADDITIONAL INFO

- Input Voltage: 24V
- CCT: 27K, 30K, 35K, 40K
- Beam Angle: 24° / 36°

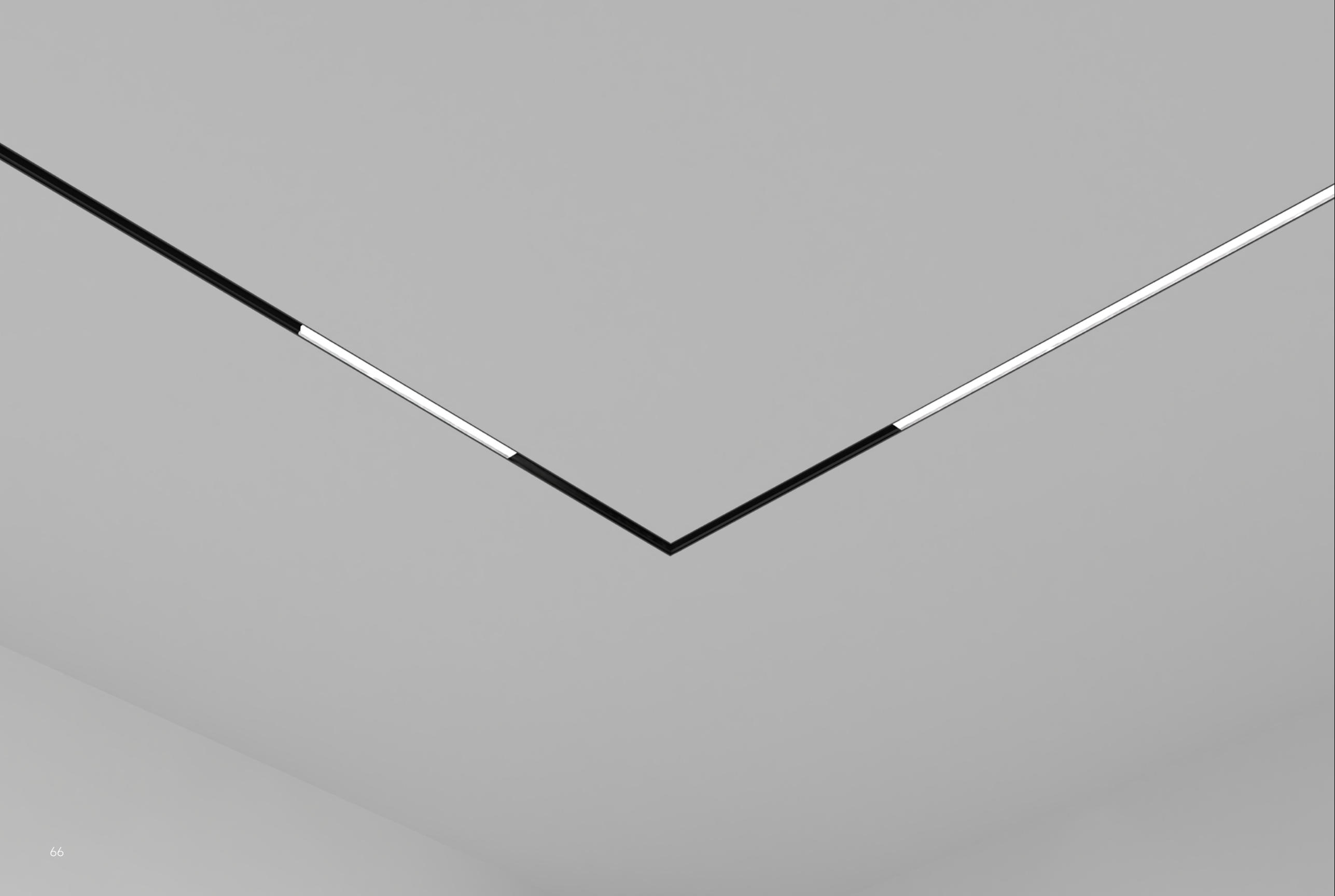


### QUE14

3W | 5W | 7W | 9W  
50LM/W  
BLACK | WHITE

#### ADDITIONAL INFO

- Input Voltage: 24V
- CCT: 27K, 30K, 35K, 40K
- Beam Angle: 24° / 36°

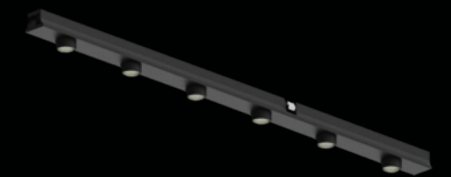


## QUE12

6W | 12W  
27LM/W  
BLACK | WHITE

### ADDITIONAL INFO

- Input Voltage: 24V
- CCT: 27K, 30K, 35K, 40K
- Beam Angle: 110°



## QUE10

6W | 12W

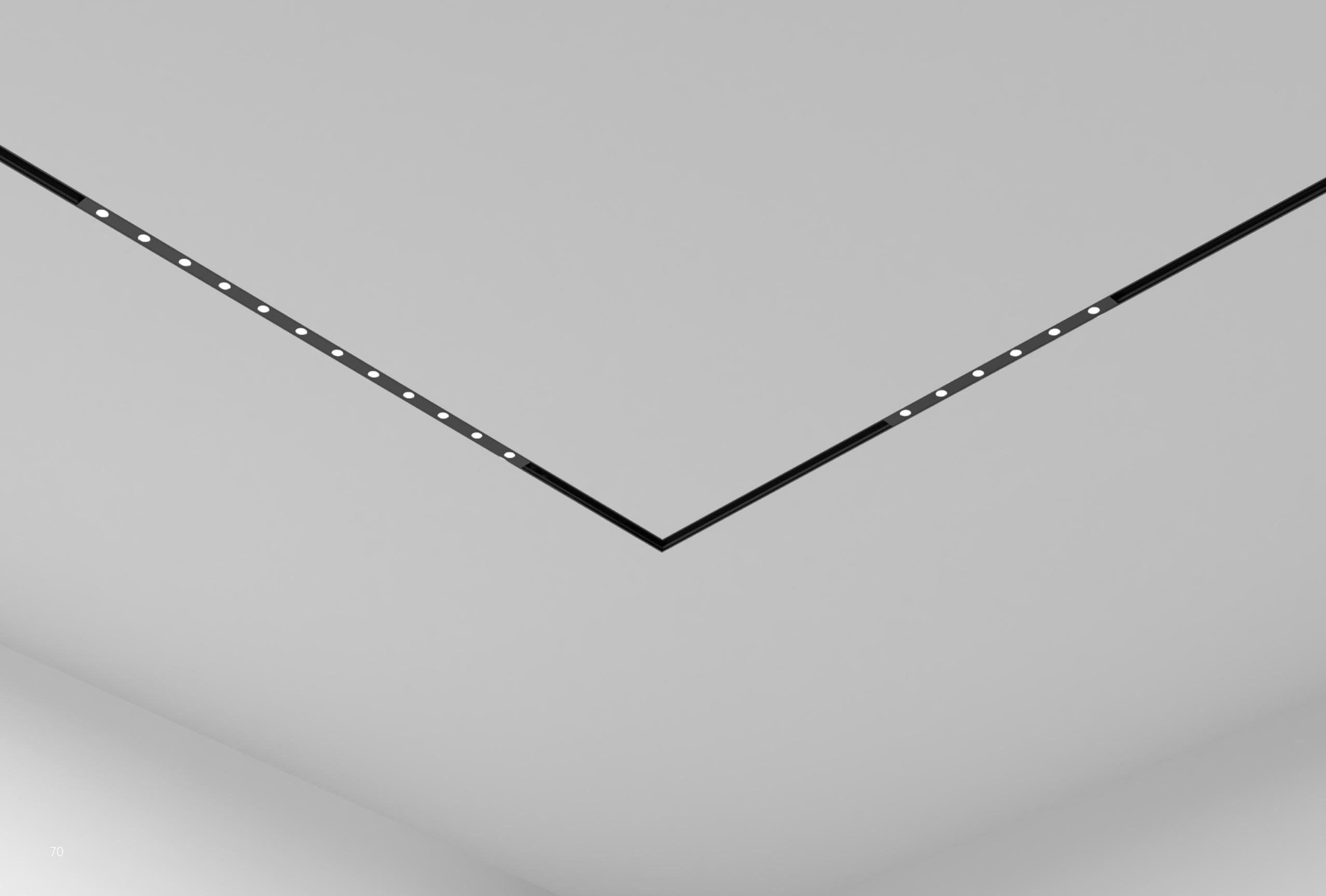
68LM/W

BLACK | WHITE

### ADDITIONAL INFO

- Input Voltage: 24V
- CCT: 27K, 30K, 35K, 40K
- Beam Angle: 36° / 45°





## QUE13

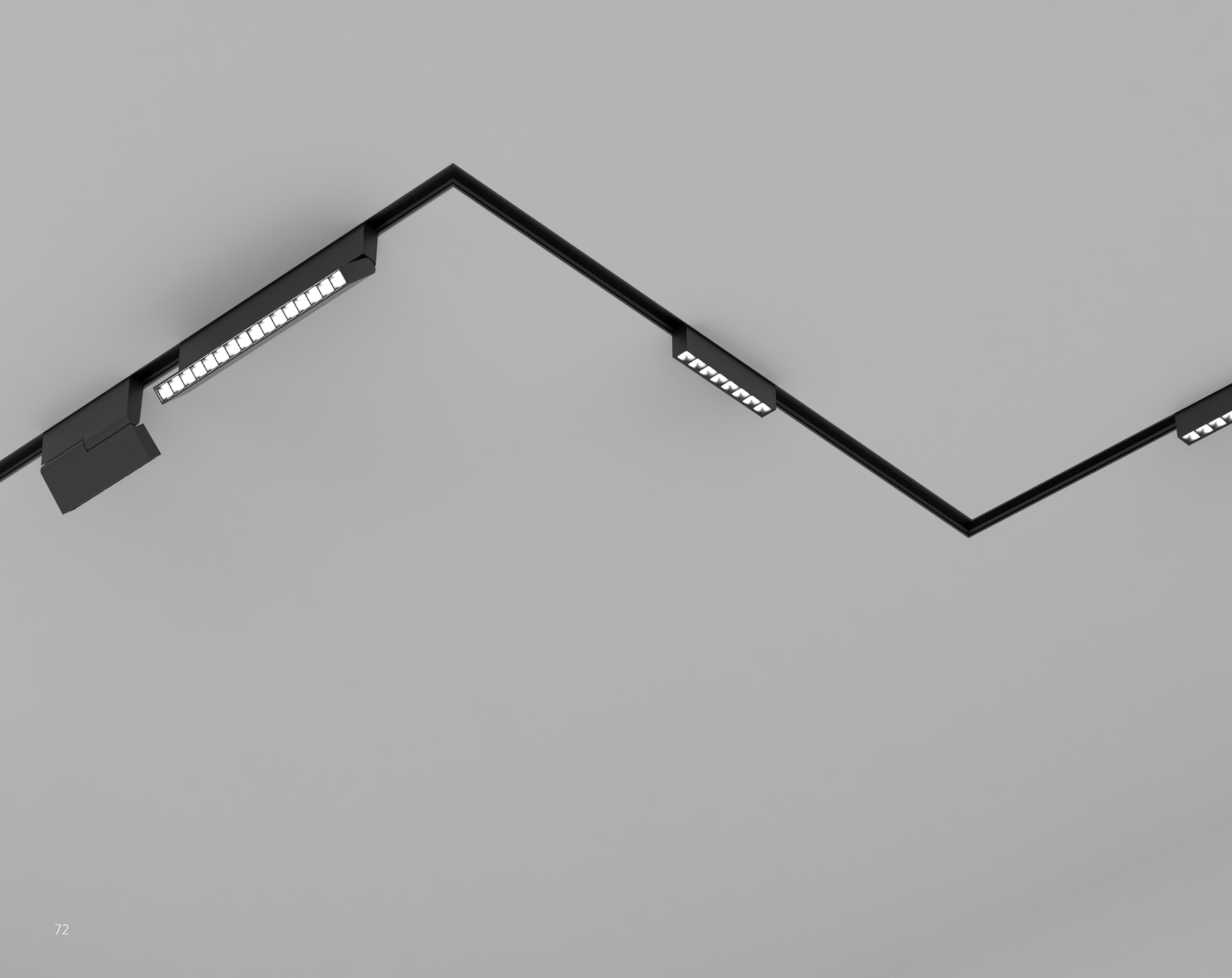
6W | 12W

55LM/W

BLACK | WHITE

### ADDITIONAL INFO

- Input Voltage: 24V
- CCT: 27K, 30K, 35K, 40K
- Beam Angle: 36° | 45°

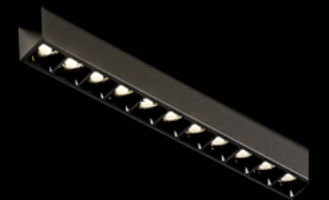


### QUE16

8W | 16W  
80LM/W  
BLACK | WHITE

#### ADDITIONAL INFO

- Input Voltage: 24V
- CCT: 27K, 30K, 40K
- Beam Angle: 24° / 40°

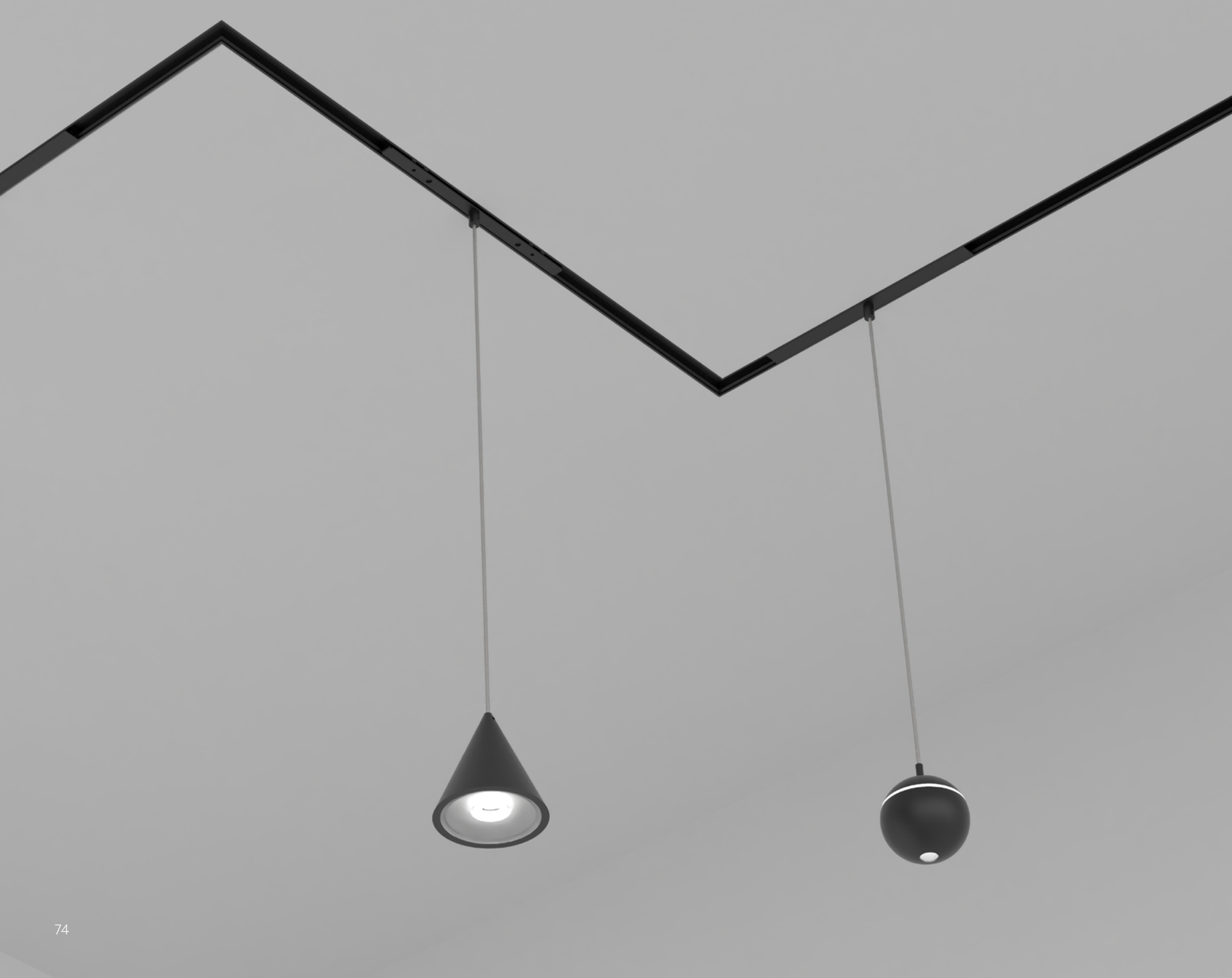


### QUE17

8W | 16W  
80LM/W  
BLACK | WHITE

#### ADDITIONAL INFO

- Input Voltage: 24V
- CCT: 27K, 30K, 40K
- Beam Angle: 24° / 40°



### QUE15

8W  
420LM  
BLACK | WHITE

#### ADDITIONAL INFO

- Input Voltage: 24V
- CCT: 27K, 30K, 35K, 40K
- Beam Angle: 15° / 24° / 40°



### QUE18

6W  
352LM/W  
BLACK | WHITE

#### ADDITIONAL INFO

- Input Voltage: 24V
- CCT: 27K, 30K, 40K
- Beam Angle: 24° / 40°





### QUE19

5W  
684LM/W  
BLACK | WHITE

#### ADDITIONAL INFO

- Input Voltage: 24V
- CCT: 27K, 30K, 40K
- Beam Angle: 330°



### QUE20

4W  
220LM/W  
BLACK | WHITE

#### ADDITIONAL INFO

- Input Voltage: 24V
- CCT: 27K, 30K, 35K, 40K
- Beam Angle: 360°

