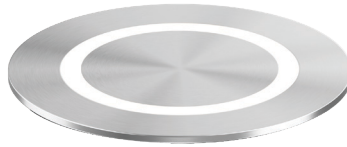




# FLORA 14

## RING IN-GROUND

TERRAIN SERIES



### FEATURES

- Ultra Thin relief
- Stainless Steel Trim
- IK07 Rating
- Multiple color temperature available

### SPECIFICATIONS

Wattage	2W	LED	OSRAM LED
Lumens	120LM	Housing	Soild Passivated Aluminum CNC machined
Input Voltage	DC 24V	Trim	Stainless steel
CCT	2700K/3000K/4000K/6000K/RGB	Cut Out	1.6"
CRI	80+	Dimension	1.7" D x 1.6" H
Beam Angle	120°	Driver	Low Voltage input coonstant current output
Dimming	Non-Dimmable	Accessories	Mounting sleeve/ Clip
IP Rating	IP67	Warranty	3 Years
IK Rating	IK07	Certification	CE, RoHS

### ORDERING GUIDE

F14 - \_\_\_\_\_ **Example: F14-2-27-120-ST**

Model	Wattage	Color Temp.	Optics	Finish	Optional Accessories
F14	<b>2</b> 2W	<b>27</b> 2700K <b>30</b> 3000K <b>40</b> 4000K <b>60</b> 6000K <b>RGB</b> RGB	<b>120</b> 120°	<b>ST</b> Stainless Steel	Installation Sleeve Clip (Included with fixture)

**QUICKSHOP OPTION: F14-2-30-120-ST**

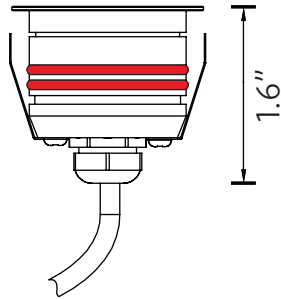
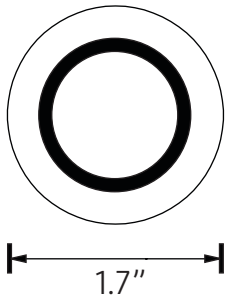




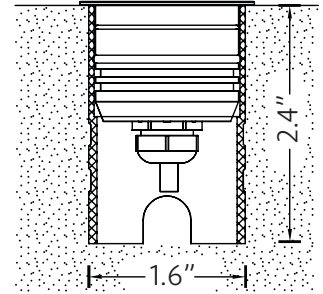
# FLORA 14 RING IN-GROUND

TERRAIN SERIES

## DIMENSIONS



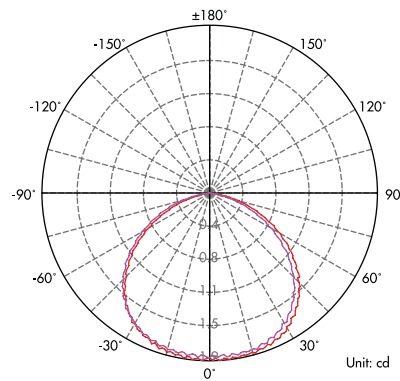
Without Installation sleeve



With Installation sleeve

## LIGHT DISTRIBUTION CURVE

3000K, 120°





# FLORA 14

## RING IN-GROUND

TERRAIN SERIES

### NON-DIMMABLE DRIVERS



Model	LB55504
Wattage	60W
Dimensions	7.4" x 3.6" x 1.02"
Temperature	IP20
Dimming	Non-Dimmable



Model	LB55450
Wattage	120W
Dimensions	8.66" x 3.6" x 1.61"
Temperature	IP20
Dimming	Non-Dimmable



Model	LB55451
Wattage	200W
Dimensions	10.23" x 4.05" x 1.81"
Temperature	IP20
Dimming	Non-Dimmable

*\*Flora Landscape Light Fixture are not compatible with Dimmable Drivers*