



FUSE

LINKABLE LINEAR

LINEAR SERIES

SURFACE MOUNT INSTALLATION GUIDE

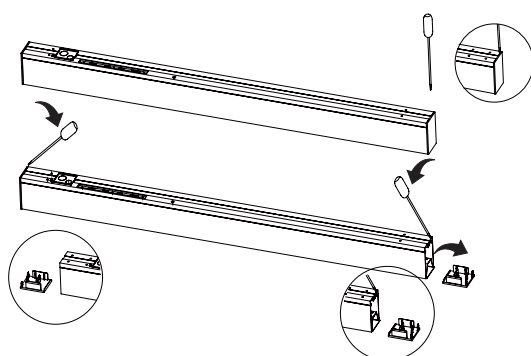


x 4 M3*20 Self- tapping screw



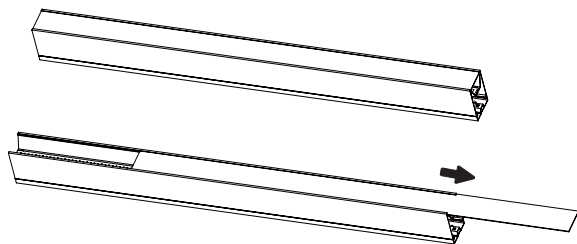
x 4 Expansion tube

STEP 1.



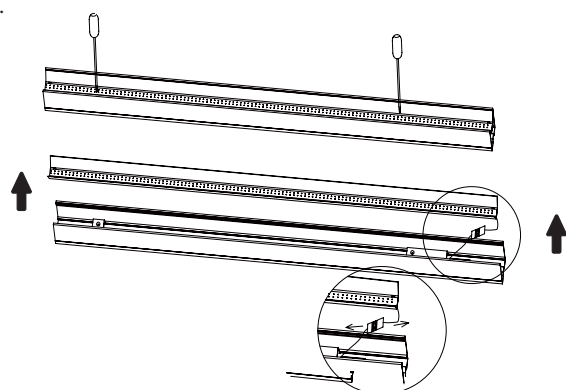
Take out the fixture, remove the two end caps

STEP 2.



Put the fixture face up, and pull out the PC cover.

STEP 3.



Unscrew the two screws on the LED module, then unplug the quick connectors between PCB and LED driver.

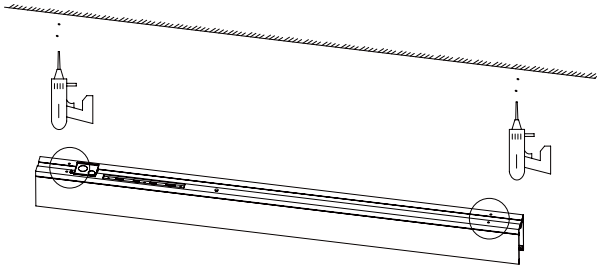


FUSE

LINKABLE LINEAR

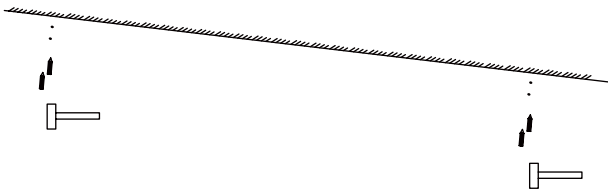
LINEAR SERIES

STEP 4.



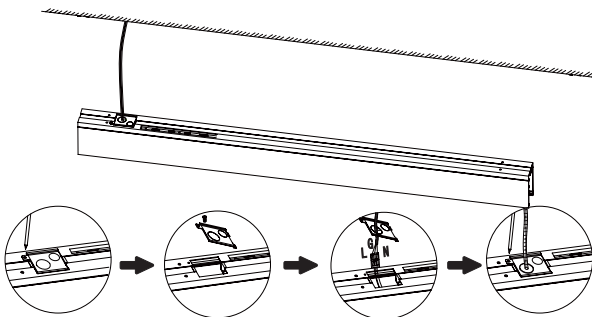
Drill holes on the ceiling according to the corresponding holes on the back of the fixture.

STEP 5.



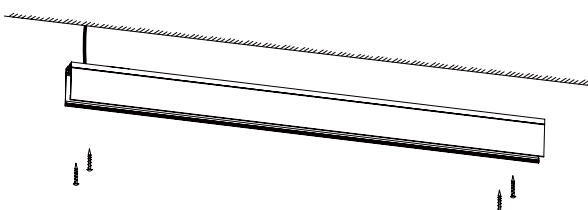
Drill expansion tubes into the corresponding holes.

STEP 6.



Open the back lit cover on the fixture by unscrew the screw, take out the AC power cord and make wiring connection, Black=Line, White=Neutral, Yellow/Green=G, Purple=Dim+, Pink=Dim-. Then lock the back lit cover with screw.

STEP 7.



Use 4 screws(provided) to fix the fixture on the ceiling.

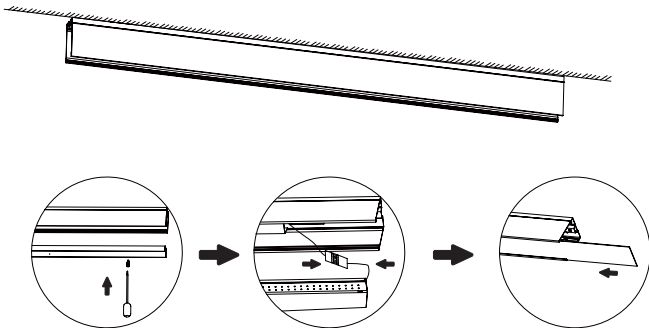


FUSE

LINKABLE LINEAR

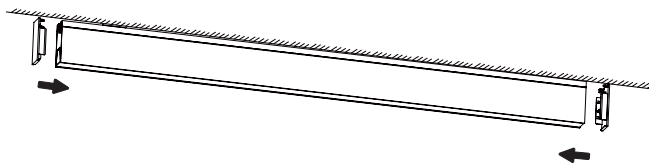
LINEAR SERIES

STEP 8.



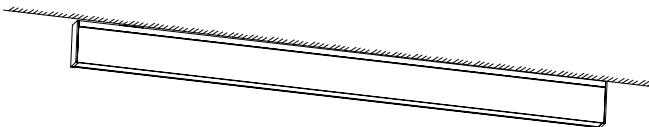
After the fixture is fixed, follow the steps in sequence, screw the LED module to the housing, connect the fast connectors between the PCB and LED driver, then slide the PC cover into the housing.

STEP 9.



Assemble the end caps, align the buckle position, slightly push forward till it locked into the fixture.

STEP 10.



Turn on the electricity to verify your successful installation.